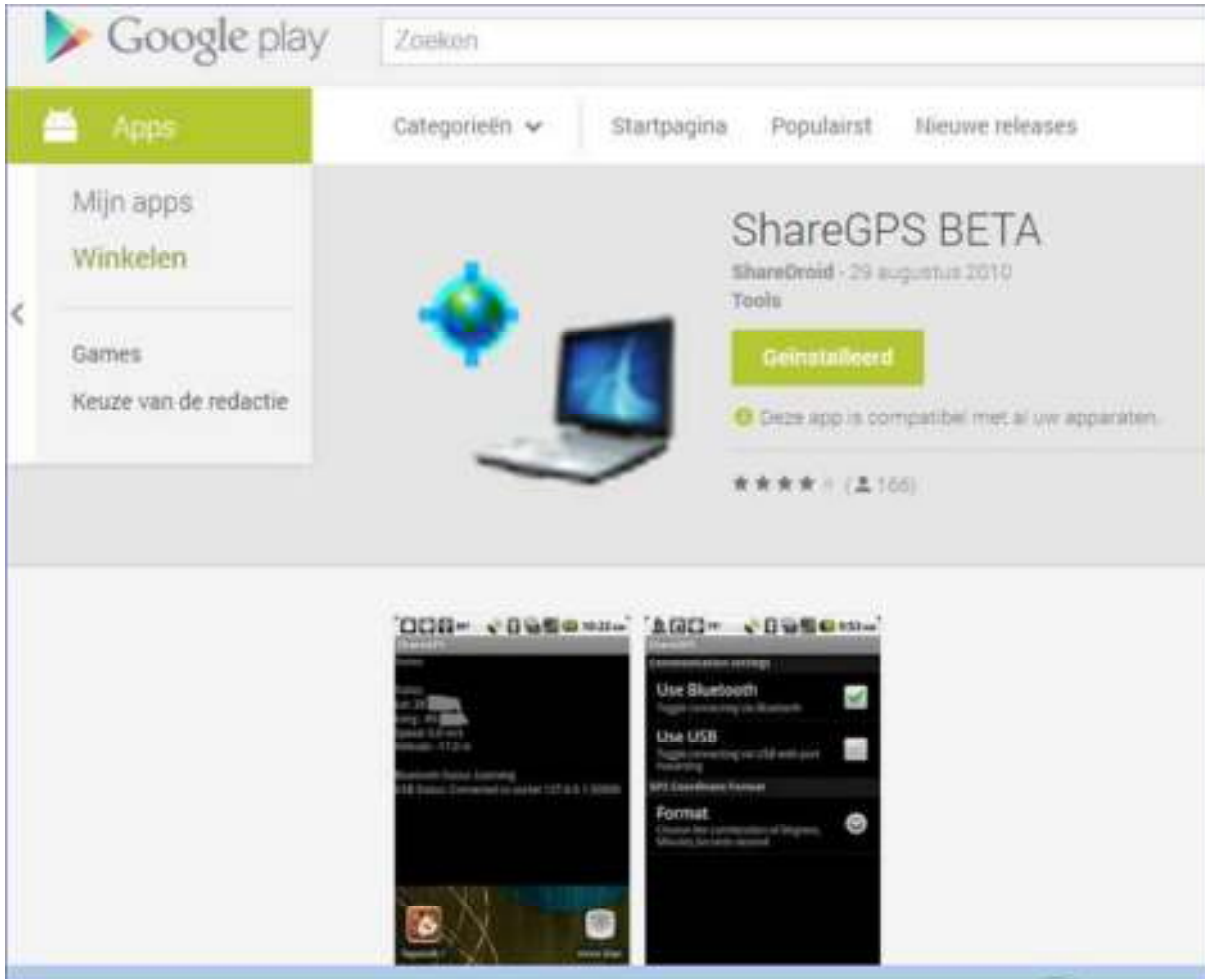


## How to use a Samsung SIII Mini as GPS for Laptop

Maybe some body explained this before, but I could not find it. So mods if so feel free to remove this thread.

How to use my Samsung SIII Mini (GT-I8190L) as [GPS](#) over an USB cable.

First download from [play.google.com/store](http://play.google.com/store) ShareGPS



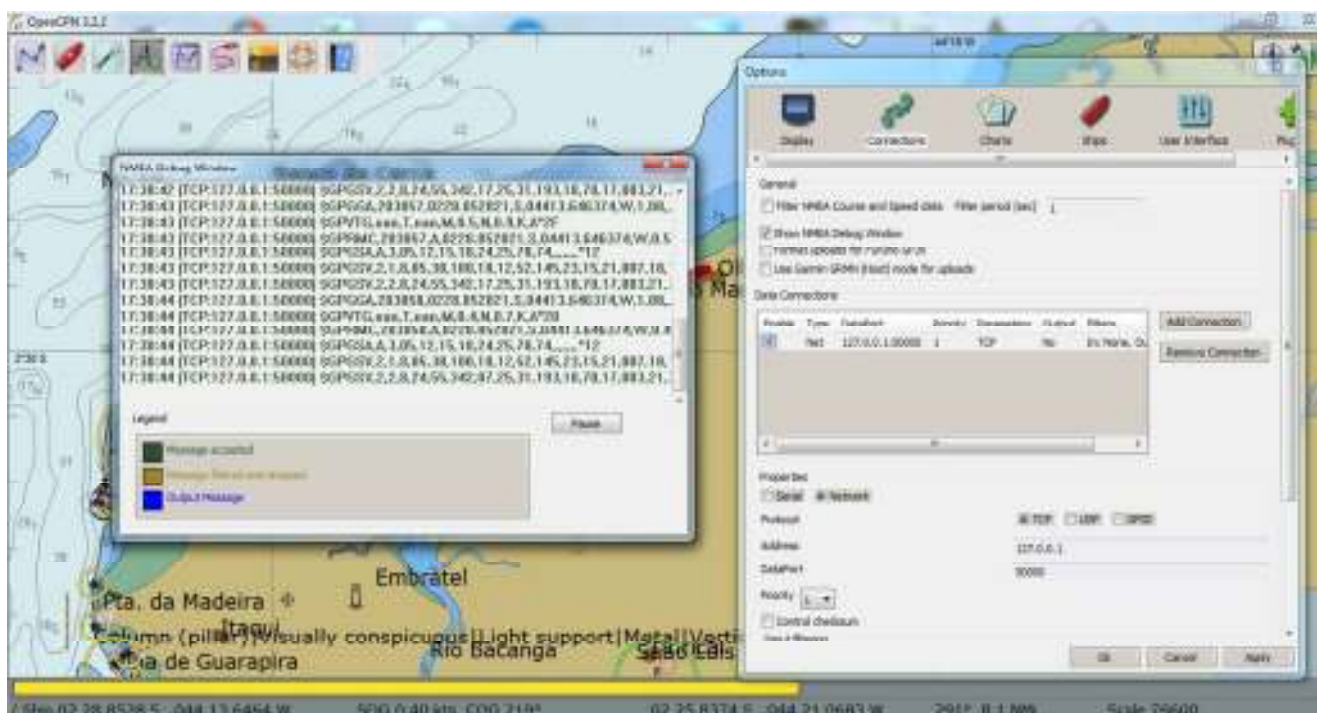
Now download for the [Laptop](#) adb.exe at <http://forum.xda-developers.com/showthread.php?t=2588979>



Run it on the [Laptop](#) in a command prompt box as "adb forward tcp:50000 tcp:50000" (without the quotation marks)



Now setup [OpenCPN](#) to receive the [NMEA](#) strings. Goto settings -> connections. Select as Properties "Network" "TCP" Adress "127.0.0.1" and Dataport "50000" and click "Apply"



Now Run on the [Phone](#) ShareGPS and go to "settings" deactivate "Use Bluetooth" - Activate "Use USB"  
Choose your Format and activate "Create NMEA"



Now the [GPS](#) will RUN, not forget to activate the GPS function on the [phone](#).

And [OpenCPN](#) work with GPS (😊 my boat seems to be in my garden)

Good Luck