

## To Automatically Steer to a Fixed Wind Angle

## Autotack

## To Adjust Autopilot Course-keeping Accuracy

# Raymarine®

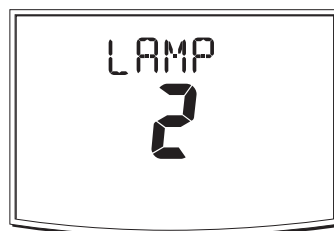
## SmartPilot X-5 ST6002 Controller

Autopilot response controls course keeping accuracy. Higher response settings keep a tighter course but increase the amount of drive activity and battery use. Set to a level appropriate for your needs

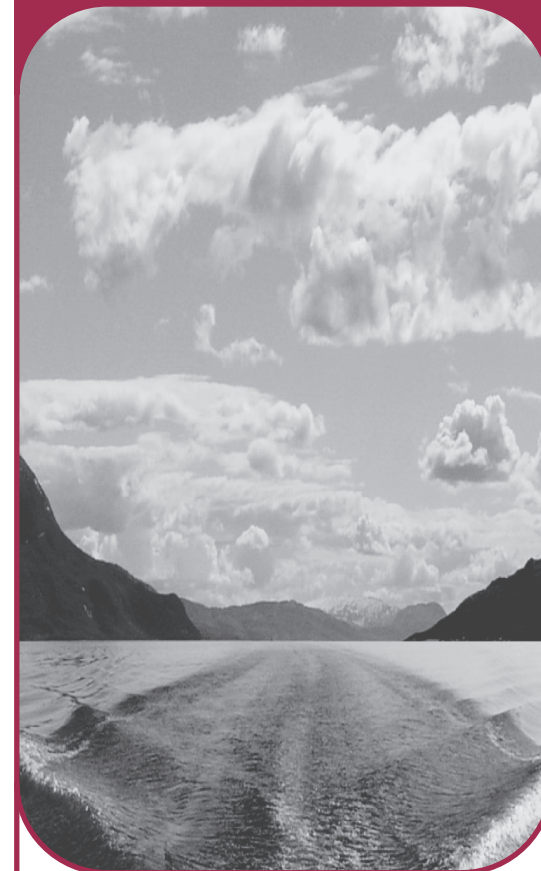


Use **-1** or **+1** to adjust response level. Press **disp** to return to previous mode.

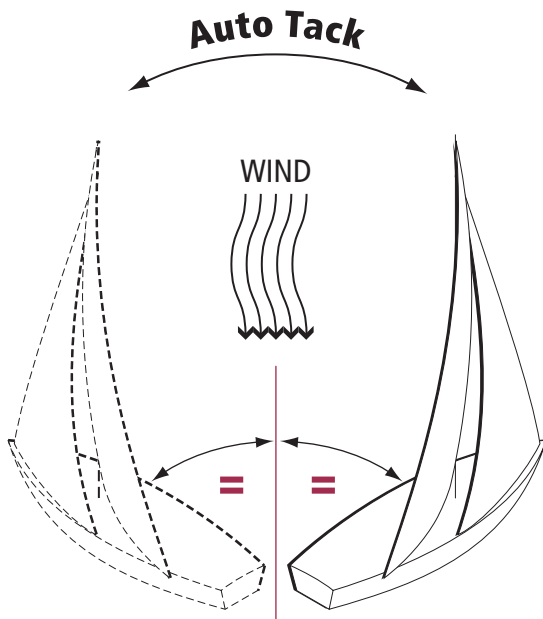
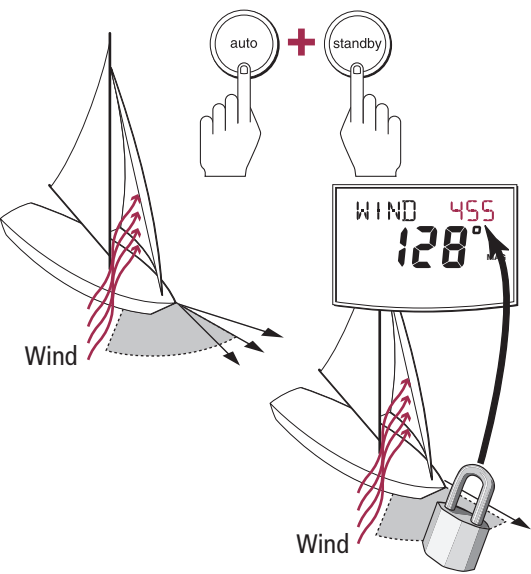
## To Adjust Lighting Level



Use **disp** to adjust lighting level. Wait 10 sec to return to previous mode.

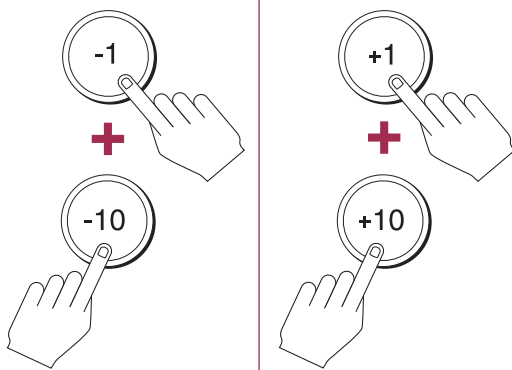


## Tiller System Quick Reference Guide

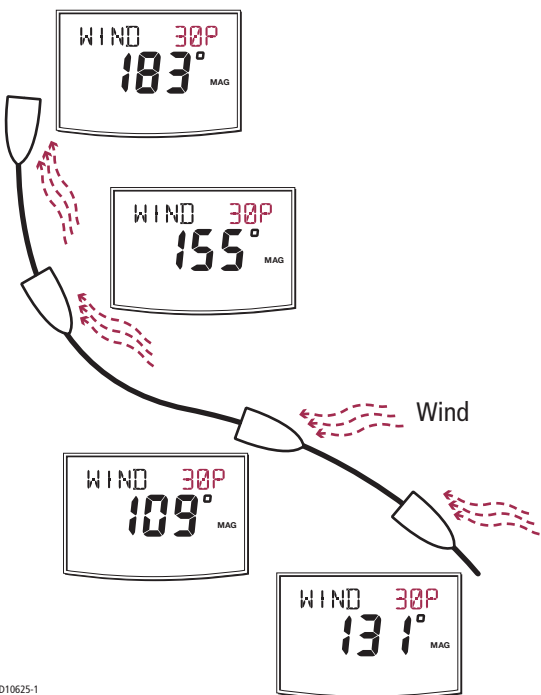


Auto Tack  
**PORT**

Auto Tack  
**STARBOARD**



Refer to the SmartPilot X-5 Tiller Operating Guide for details



## Display Layout



**standby**  
Press for Manual Control

**auto**  
Press to activate the Autopilot

### course change keys

Port 1°      Starboard 1°  
Port 10°     Starboard 10°

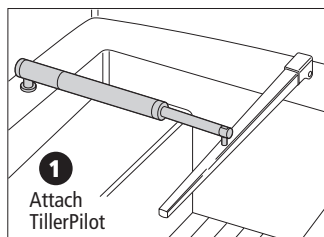
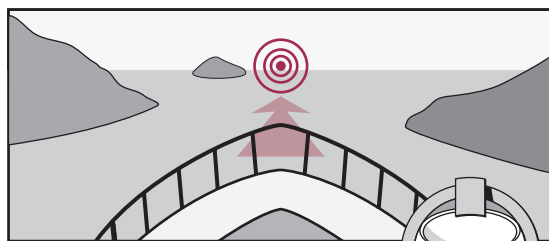


**disp**  
Press to display data pages  
Press for 1 second for lamp control  
Press for 3 seconds for power off

### track

When the Autopilot is activated, press to follow a route from a connected navigation system.  
Press again to accept the new course

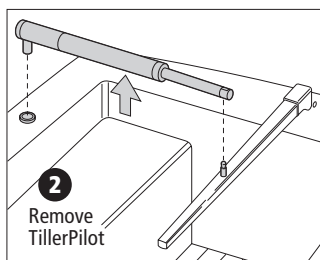
## To activate the Autopilot



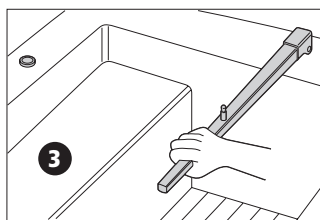
1 Attach TillerPilot



## For Manual Control

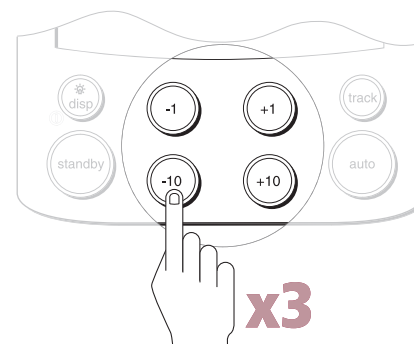
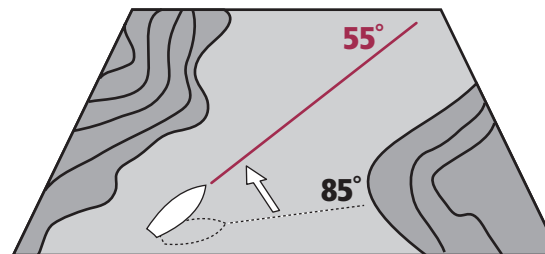


2 Remove TillerPilot



3

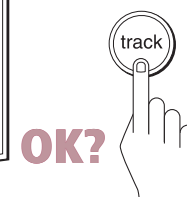
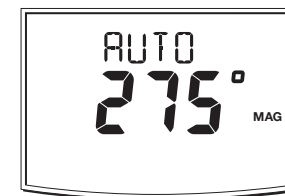
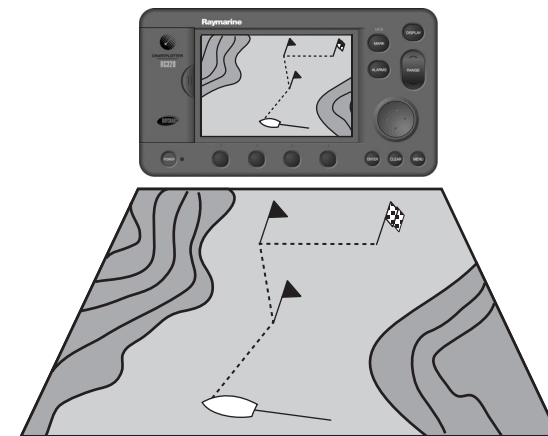
## To change the Autopilot Heading



x3



## To follow a Route set on a Chartplotter



OK?

