

THE  
**MORF<sup>®</sup> BLOCK**

*MODULAR - LIGHT- STRONG -SAFE*



*Engineered by*

**GYD**  
*G Yacht Design*

## MORF® BLOCK Patented technology.

MORF BLOCK is a smart user-oriented sailboat block. The MORF BLOCK utilizes two patented technologies to deliver maximum freedom and simplicity to achieve a modular, light, strong and safe block.

Its patented modular technology allow the MORF BLOCK cheeks to be easily mounted in a single or multiple sheave configuration; this can be achieved by the use of ropes as primary structure. The cheeks have been designed to snap-fit avoiding the use of metal fasteners and tools.

Its patented bearing technology not only provides a low friction media between the rope and sheave but protects its components from ware. Bearings have been designed to match existing low friction rings to be used as sheaves.

Due to its modular nature the MORF BLOCK is available as a complete block or set of parts allowing the user to configure its own block according to the specific needs and preferred ropes and low friction rings. The MORF BLOCK is also ideal for industry professionals, which can by the use of cheeks, bearings and sheaves configure and offer their "own" block range.

MORF BLOCK cheeks and bearings are manufactured by FFF, also known as 3D Printing. This innovative production system is the perfect match for the MORF BLOCK as it allows to focus the production according to the given demand, expand the size range, create different bearings to expand the sheave selection, utilize different materials and colours and provide custom solutions in a more affordable and sustainable way.



# THE MORF<sup>®</sup> BLOCK SINGLE SHEAVE

MORF<sup>®</sup> BLOCK modular block.  
It's patented cheek and bearing system allows the user to create blocks to suit their requirements by the use of existing low friction rings.

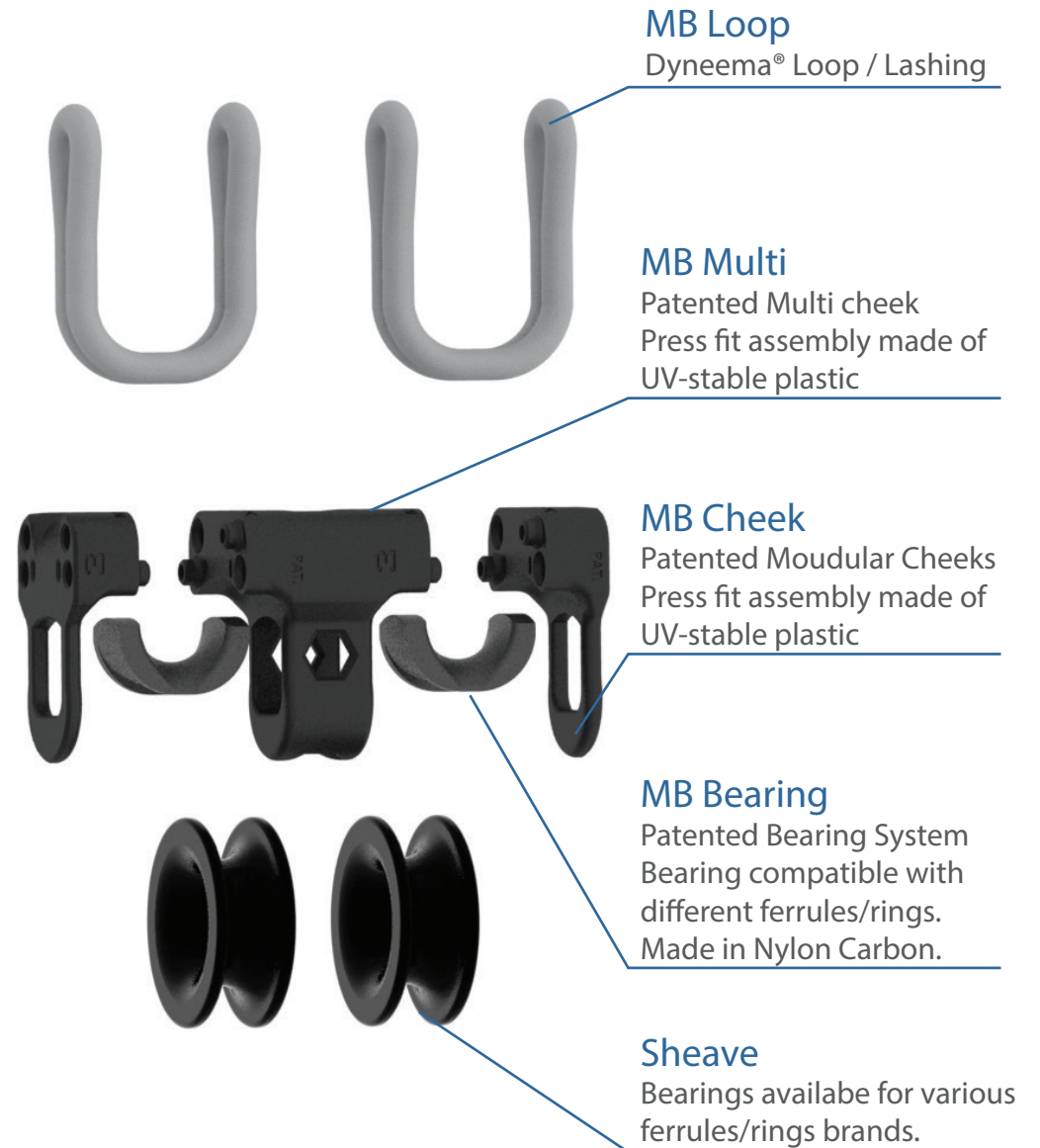
- **SAFE**
- **LIGHT**
- **STRONG**
- **MODULAR**



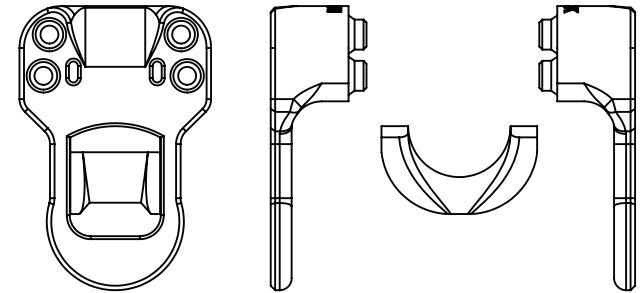
# THE MORF<sup>®</sup> BLOCK MULTI SHEAVE

MORF<sup>®</sup> BLOCK modular block.  
It's patented technology enables the user to build double and triple blocks without the need of any tools.

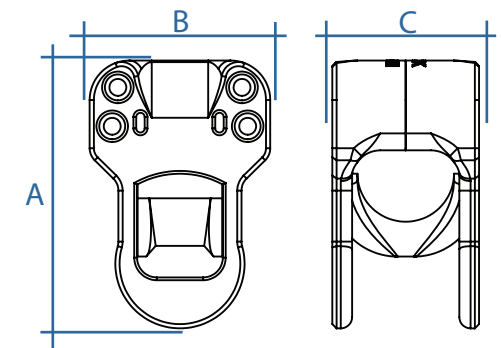
- **SAFE**
- **LIGHT**
- **STRONG**
- **MODULAR**



MORF<sup>®</sup> BLOCK Cheeks and Bearings.  
Compatible with existing rings; make your own block with your preferred components.

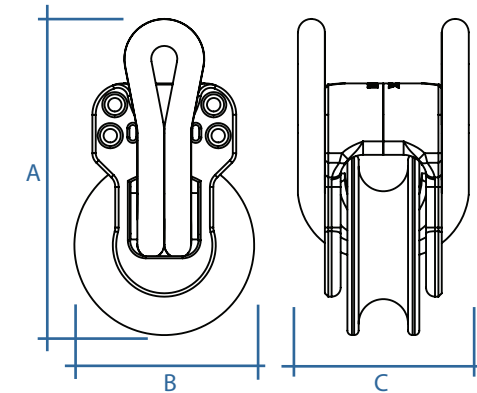


	Bearings/Sheave		Loop ømax mm	Line ømax mm	Dimensions [mm]			Weight [g] Total
	Brand	Size			A	B	C	
<b>MB 1</b>	Tylaska	FR5	2mm (basket)	5	26	15	15	<b>1 g</b>
<b>MB 2</b>	Tylaska	FR7	3mm (basket)	7	36	20	19	<b>4 g</b>
	Antal	10x7	3mm (basket)	7	36	20	19	<b>4 g</b>
	Wichard	FRX10	3mm (basket)	8	36	20	19	<b>4 g</b>
	LOOP	LT-24	3mm (basket)	8	36	20	19	<b>4 g</b>
<b>MB 3</b>	Tylaska	FR10	4mm (basket)	10	47	32	27	<b>12 g</b>
	Antal	14x10	4mm (basket)	10	47	32	27	<b>12 g</b>
	Wichard	FRX15	4mm (basket)	10	47	32	27	<b>12 g</b>
	LOOP	LT40	4mm (basket)	10	47	32	27	<b>12 g</b>
<b>MB 4</b>	Tylaska	FR14	6mm (basket)	14	67	42	34	<b>34 g</b>
	Antal	20x14	6mm (basket)	14	67	42	34	<b>34 g</b>
	Wichard	FRX20	6mm (basket)	14	67	42	34	<b>34 g</b>
	LOOP	LT50	6mm (basket)	14	67	42	34	<b>34 g</b>



All product and company names are trademarks™ or registered® trademarks of their respective holders. Use of them does not imply any affiliation with or endorsement by them.  
The information provided in this document is intended for informational purposes only and is subject to change without notice. .

MORF<sup>®</sup> BLOCK complete block range.  
Fully assembled block with Cheeks, Bearings,  
Sheave and loop.



	Sheave		Loop ømax mm	Line ømax mm	Dimensions [mm]			SWL [Kg] block	BL [Kg] block	Weight [g] Total
	Brand	Size			A	B	C			
<b>MB 1</b>	Tylaska	FR5	2mm (basket)	5	30	20	21	<b>225 Kg</b>	600	<b>6 g</b>
<b>MB 2</b>	Tylaska	FR7	3mm (basket)	7	50	28	26	<b>625 Kg</b>	1720	<b>14 g</b>
	Antal	10x7	3mm (basket)	7	49	25	26	<b>625 Kg</b>	1600	<b>13 g</b>
	Wichard	FRX10	3mm (basket)	8	49	25	26	<b>625 Kg</b>	1600	<b>13 g</b>
	LOOP	LT-24	3mm (basket)	8	48	24	26	<b>625 Kg</b>	1800	<b>11 g</b>
<b>MB 3</b>	Tylaska	FR10	4mm (basket)	10	70	40	35	<b>1000 Kg</b>	3000	<b>39 g</b>
	Antal	14x10	4mm (basket)	10	67	34	35	<b>1000 Kg</b>	3000	<b>32 g</b>
	Wichard	FRX15	4mm (basket)	10	68	35	35	<b>1000 Kg</b>	3000	<b>32 g</b>
	LOOP	LT40	4mm (basket)	10	70	40	35	<b>1000 Kg</b>	3000	<b>36 g</b>
<b>MB 4</b>	Tylaska	FR14	6mm (basket)	14	100	56	48	<b>2500 Kg</b>	6360	<b>100 g</b>
	Antal	20x14	6mm (basket)	14	97	50	48	<b>2500 Kg</b>	6400	<b>86 g</b>
	Wichard	FRX20	6mm (basket)	14	97	50	48	<b>2500 Kg</b>	6400	<b>86 g</b>
	LOOP	LT50	6mm (basket)	14	97	50	48	<b>2500 Kg</b>	7500	<b>80 g</b>

Final dimensions and weights are dependent on sheave and loop choice.

*All product and company names are trademarks™ or registered® trademarks of their respective holders. Use of them does not imply any affiliation with or endorsement by them.  
The information provided in this document is intended for informational purposes only and is subject to change without notice. .*

MORF<sup>®</sup> BLOCK loop.

Make your own loops with the MB Loop Guide.



Loop

	Loop ømax mm	Min Rope BL kg	diam mm	finish length mm	rope cut length mm	"tail" length mm
<b>MB 1</b>	2mm (basket)	225	2	60	300	65
<b>MB 2</b>	3mm (basket)	625	3	80	360	85
<b>MB 3</b>	4mm (basket)	1000	4	120	520	120
<b>MB 4</b>	6mm (basket)	2500	6	160	680	160

The loop rope must be chosen considering the load requirements and lashing method; it is highly recommended to use Dyneema<sup>®</sup> SK78 or higher specification ropes. Rope covers are optional.

It is very important to ensure that the loops cover the bearing completely with while not interfering with the cheeks. The use of undersized loops may damage the bearing resulting in lower SWL.

All cut dimensions must be used as a guide line only.

*All product and company names are trademarks<sup>™</sup> or registered<sup>®</sup> trademarks of their respective holders. Use of them does not imply any affiliation with or endorsement by them. The information provided in this document is intended for informational purposes only and is subject to change without notice. .*

THE  
**MORF<sup>®</sup> BLOCK**

[info@morfblock.com](mailto:info@morfblock.com)

[www.morfblock.com](http://www.morfblock.com)

*Engineered by*

**GYD**  
*G Yacht Design*



DISTRIBUTOR: