



406-S

609-S

811-S

JIB REEFING - OWNER'S MANUAL

GB

ENROULEUR DE FOC - NOTICE D'UTILISATION

F

ROLLREFFANLAGE - AUFBLASBARE RETTUNGSWESTEN

D

ROLREEFSYSTEEM - GEBRUIKERSHANDLEIDING

NL

ENROLLADOR - GUIA DE UTILIZACION

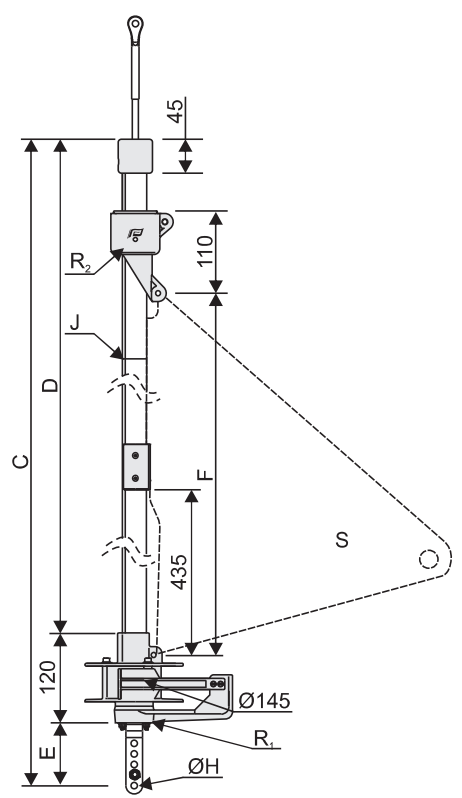
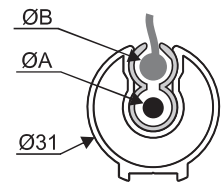
E

RULLFOCKSYSTEM - INSTRUKTIONER OCH HANDHAVANDE

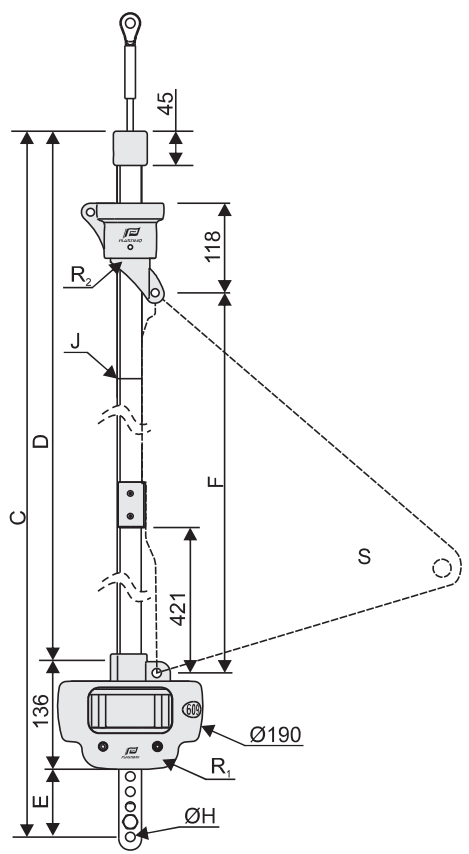
S

AVVOLGITORE - MANUALE D'USO

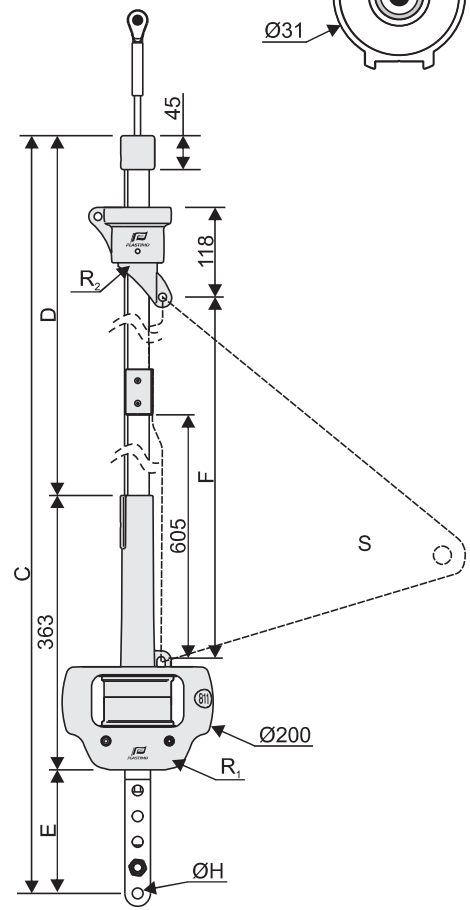
I



406-S



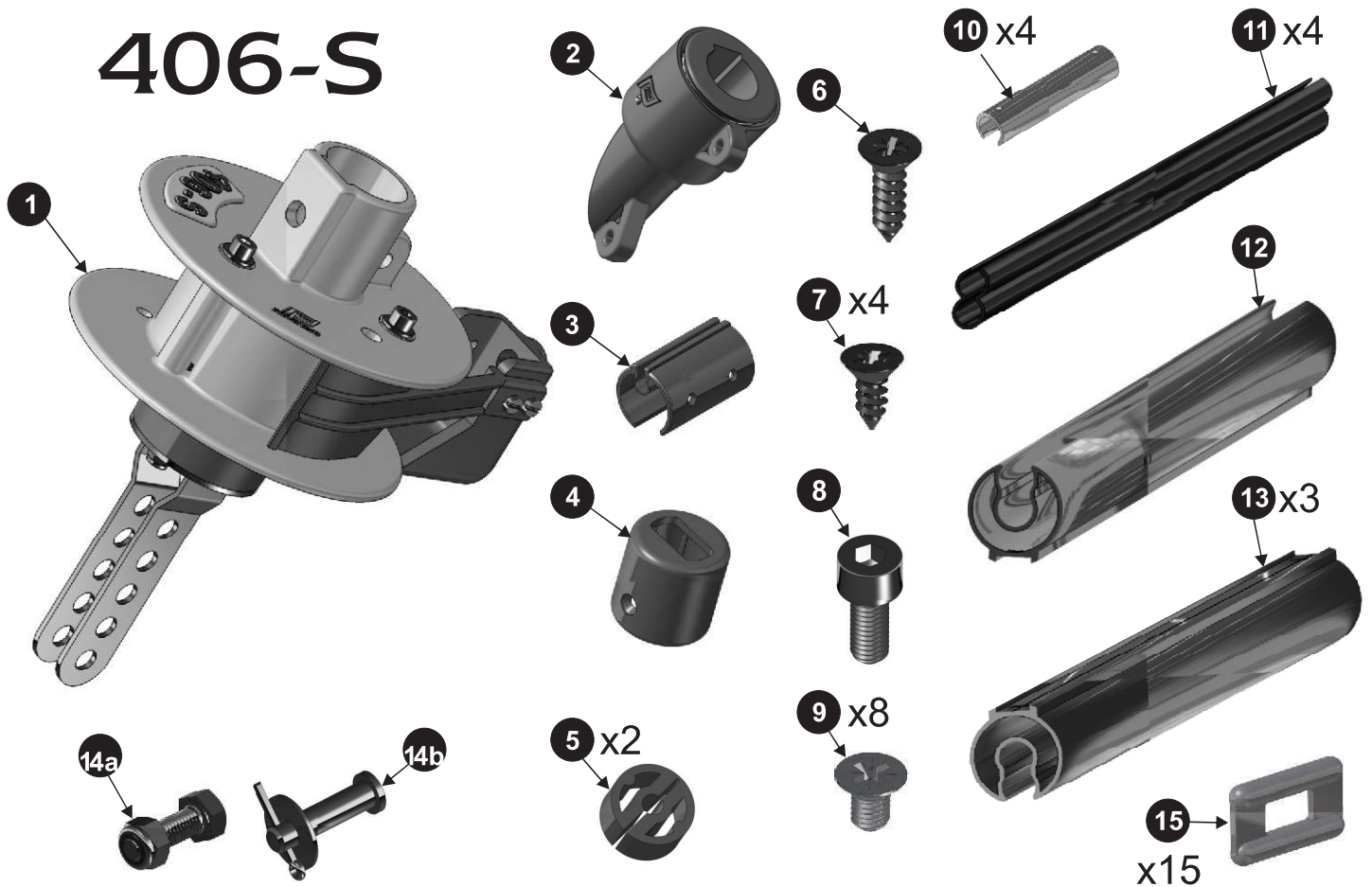
609-S



811-S

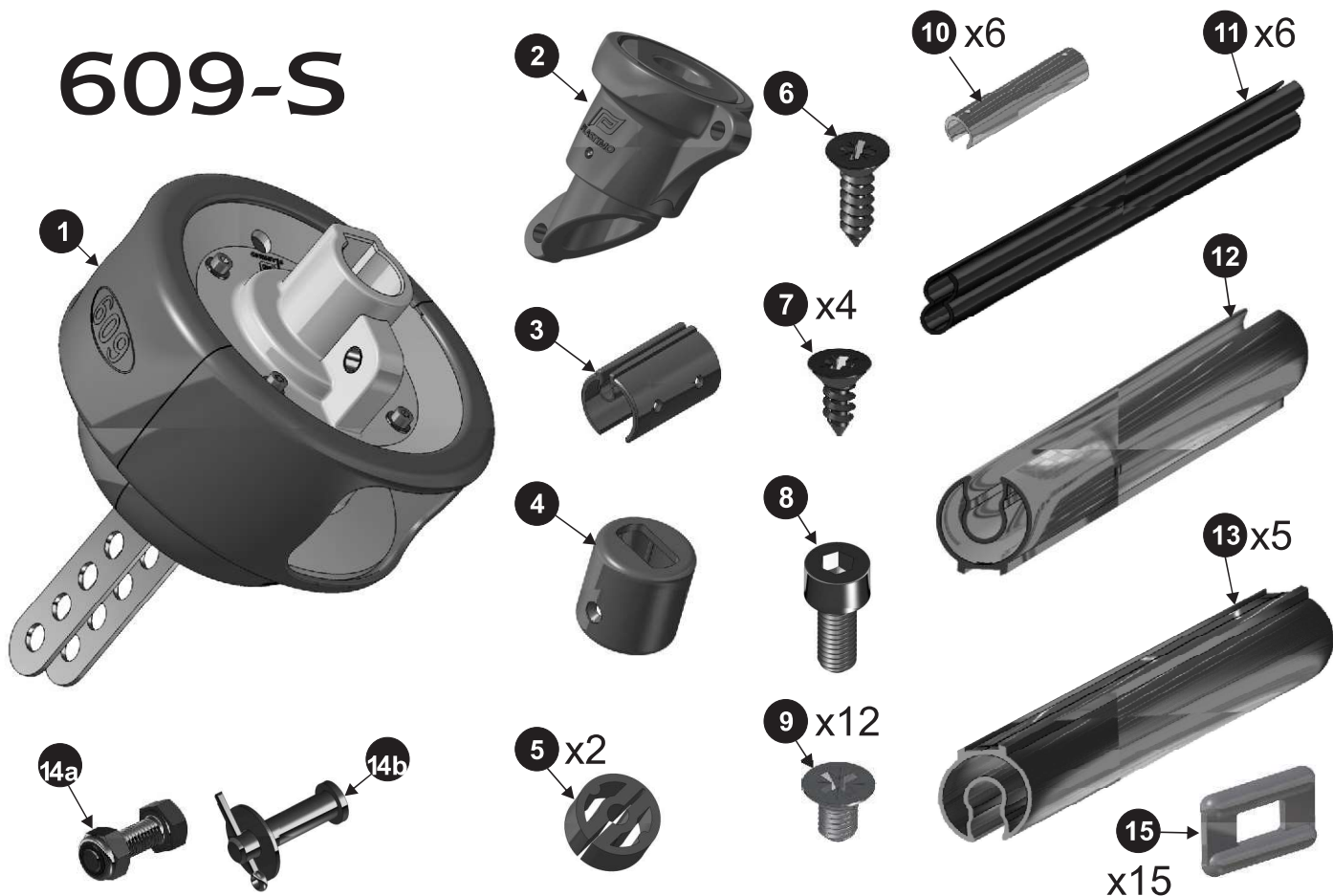
	GB		F		D		NL		E		S	I		
	chainplate	turnbuckle	latte	ridoir	Terminal- montage	Stagespanner- inrichting	steyenplaa- tuitvoering	spanschroef- tuitvoering	placas	tensor		Landre	Arridatoi	
406-S	25722	25723	25722	25723	25722	25723	25722	25723	25722	25723	58203	25722	25723	
609-S	58202	58203	58202	58203	58202	58203	58202	58203	58202	58203	58203	58202	58203	
811-S	58204		58204		58204		58204		58204		58204	58204		
ØA	forestay : Ø4-7mm		étai : Ø4-7mm		Vorstag : Ø4-7mm		voorstag : Ø4-7mm		estay : Ø4-7mm		Förstag : Ø4-7mm		Strallo : Ø4-7mm	
ØB	luffrope : Ø6.5mm		ralingue : Ø6.5mm		Vorliek : Ø6.5mm		voorlijk : Ø6.5mm		relinga : Ø6.5mm		Lik : Ø6.5mm		ralinga : Ø6.5mm	
C	407-S	6.20m	6.28m	6.20m	6.28m	6.20m	6.28m	6.20m	6.28m	6.20m	6.28m	6.28m	6.20m	6.28m
	609-S	9.22m	9.40m	9.22m	9.40m	9.22m	9.40m	9.22m	9.40m	9.22m	9.40m	9.40m	9.22m	9.40m
	811-S	11.05m		11.05m		11.05m		11.05m		11.05m		11.05m	11.05m	
D	407-S	5.95m		5.95m		5.95m		5.95m		5.95m		5.95m	5.95m	
	609-S	8.94m		8.94m		8.94m		8.94m		8.94m		8.94m	8.94m	
	811-S	10.44m		10.44m		10.44m		10.44m		10.44m		10.44m	10.44m	
E	407-S	65mm	150mm	65mm	150mm	65mm	150mm	65mm	150mm	65mm	150mm	150mm	65mm	150mm
	609-S	115mm	285mm	115mm	285mm	115mm	285mm	115mm	285mm	115mm	285mm	285mm	115mm	285mm
	811-S	220mm		220mm		220mm		220mm		220mm		220mm	220mm	
F	407-S	5.82m		5.82m		5.82m		5.82m		5.82m		5.82m	5.82m	
	609-S	8.80m		8.80m		8.80m		8.80m		8.80m		8.80m	8.80m	
	811-S	10.49m		10.49m		10.49m		10.49m		10.49m		10.49m	10.49m	
G	407-S													
	609-S	I groove		I gorge		I Nuten		I zeilgroeven		I relingas		I likrännor		
	811-S													
ØH	407-S	8.5mm		8.5mm		8.5mm		8.5mm		8.5mm		8.5mm		
	609-S	12.5mm		12.5mm		12.5mm		12.5mm		12.5mm		12.5mm		
	811-S	14.3mm		14.3mm		14.3mm		14.3mm		14.3mm		14.3mm		
J	407-S													
	609-S	coupling units : aluminium + screws		jonctions aluminium + vis		Verbindungen Alu- minium + Schrauben		koppelstuk alu + schroeven		Empalmes aluminio + tornillos		Kopplingar alumi- nium + skruv		
	811-S													
R ₁	407-S	bearing: Delrin		roulement Delrin		Kugellager Delrin		lagering Delrin		Rodamientos Delrin		Kullager Delrin		
	609-S	bearing: Delrin,inox		roulement Delrin,inox		Kugellager Delrin,inox		lagering Delrin,RVS		Rod. Delrin,inox		Kulla. Delrin,rostfritt		
	811-S	bearing: Delrin, Torlon		roulement Delrin, Torlon		Kugellager Delrin, Torlon		lagering Delrin, Torlon		Rod. Delrin, Torlon		Kulla. Delrin, Torlon		
R ₂	407-S	bearing: Delrin		roulement Delrin		Kugellager Delrin		lagering Delrin		Rodamientos Delrin		Kullager Delrin		
	609-S	bearing: Delrin, Torlon		roulement Delrin, Torlon		Kugellager Delrin, Torlon		lagering Delrin, Torlon		Rodamientos Delrin, Torlon		Kullager Delrin, Torlon		
	811-S													
S	407-S	12m ²		12m ²		12m ²		12m ²		12m ²		12m ²		
	609-S	25m ²		25m ²		25m ²		25m ²		25m ²		25m ²		
	811-S	35m ²		35m ²		35m ²		35m ²		35m ²		35m ²		

406-S



	GB	F	D	NL	E	S	I
1	1 drum unit	1 ensemble tambour	1 Trommel	1 roltrommel	1 conjunto tambor	1 Trumma med revlinematare	1 insieme tamburo
2	1 halyard swivel	1 émerillon	1 Fallwirbel	1 valwartel	1 giratorio	1 Fallsvirvel	1 mulinello
3	1 boltrope prefeeder	1 guide ralingue	1 Liekeinführung	1 voorlijkinvoer	1 guía relinga	1 Segelinmatare	1 guida ralinga
4	1 top end stop	1 embout profil	1 Profilansatzstück	1 top eind stuk	1 terminal tope	1 Toppdel	1 Terminale profilato
5	2 bearings	2 paliers de profil	2 Stopper	2 lagere	2 cojinetes	2 Lagringar	2 Supporti
6	4 screws Ø3.9x9.5 (prefeeder)	4 vis tôle TF Ø3.9x9.5 fixation guide ralingue	4 Schraube Ø3.9x9.5 (Liekeinführung)	4 schroeven Ø3.9x9.5 (voorlijkinvoer)	4 tornillos Ø3.9x9.5 (guía relinga)	4 spårskruv Ø3.9x9.5 (Segelinmatare)	4 viti lamiera Ø3.9x9.5 (guida ralinga)
7	1 screw Ø4.8x12. (top end stop)	1 vis tôle TF Ø4.8x12. fixation embout profil	1 Schraube Ø4.8x12. (Profilansatzstück)	1 schroef Ø4.8x12. (top eind stuk)	1 tornillo Ø4.8x12. (terminal tope)	1 spårskruv Ø4.8x12. (Toppdel)	1 vite lamiera Ø4.8x12 (terminale profilato)
8	1 screw M5x12 (base spar)	1 vis Chc M5x12 fixation profil bas	1 Schraube M5x12 (unteres Profil)	1 schroef M5x12 (basisprofiel)	1 tornillo M5x12 (perfil bajo)	1 insex M5x12 (Bottenprofil)	1 vite a brugola M5x12 (profilato basso)
9	8 screws M5x8 (spar connections)	8 vis TF M5x8 liaison profils	8 Schraube M5x8 (Verbindung der Profile)	8 bouten M5x8 (koppelstukken)	8 Tornillos M5x8 (unión perfiles)	8 insex M5x8 (profilkopplingarna)	8 vite M5x8 (collegamento profilati)
10	4 Coupling sleeves	4 pièces de jonction aluminium	4 Verbindungsstücke	4 koppelstukken	4 piezas de uniones	4 Skarvstycken	4 Pezzi di giunzione
11	4 PVC liners	4 profils PVC	4 PVC-Profile	4 PVC binnenprofielen	4 Perfiles PVC	4 Innerprofil i PVC - plastprofil	4 Profilati PVC
12	1 base spar	1 profil aluminium bas	1 unteres Profil	1 basisprofiel	1 perfil bajo	1 Bottenprofil	1 profilato basso
13	3 Intermediate spars	3 profils aluminium intermédiaires	3 Zwischenprofile	3 standaardprofielen	3 Perfiles intermedios	3 Standard profiler	3 Profilati intermedi
14a	1 screw + nut M8x35 => chainplate	1 vis+écrou M8x35 modèle lattes	1 Schraube M8x35 Terminalmontage	1 bunt M8x35 stevenplaatuitvoering	1 tornillo M8x35 (placas)	1 insex M8x35	1 Vite M8x35 Modello Landre
14b	1 Shouldered clevis pin Ø8 (= >turnbuckle)	1 axe épaulé Ø8 modèle ridoir	1 Bolzen, dick Ø8 Stagspannermontage	1 pen Ø8 spanschroefuitvoering	1 Bulón Ø8 (tensor)	1 Riggbult Ø8	1 Asse a testa Ø8 Modello arridatoi
15	15 PVC slide (= >turnbuckle)	15 coulisseau plastique modèle ridoir	15 PVC Rutscher Stagspannermontage	15 PVC-leuwer spanschroefuitvoering	15 patin (tensor)	15 Plasttravare	15 guida in plastica Modello arridatoi

609-S



	GB	F	D	NL	E	S	I
1	1 drum unit	1 ensemble tambour	1 Trommel	1 roltrommel	1 conjunto tambor	1 Trumma	1 insieme tamburo
2	1 halyard swivel	1 émerillon	1 Fallwirbel	1 valwartel	1 giratorio	1 Fallsvirvel	1 mulinello
3	1 boltrope prefeeder	1 guide ralingue	1 Liekeinführung	1 voorlijkinvoer	1 guía relinga	1 Segelinmatare	1 guida ralinga
4	1 top end stop	1 embout profil	1 Profilanatzstück	1 top eind stuk	1 terminal tope	1 Toppdel	1 Terminale profilato
5	2 bearings	2 paliers de profil	2 Stopper	2 lagere	2 cojinetes	2 Lagringar	2 Supporti
6	4 screws Ø3.9x9.5 (prefeeder)	4 vis tôle TF Ø3.9x9.5 fixation guide ralingue	4 Schraube Ø3.9x9.5 (Liekeinführung)	4 schroeven Ø3.9x9.5 (voorlijkinvoer)	4 tornillos Ø3.9x9.5 (guía relinga)	4 spårskruv Ø3.9x9.5 (Segelinmatare)	4 viti lamiera Ø3.9x9.5 (guida ralinga)
7	1 screw Ø4.8x12. (top end stop)	1 vis tôle TF Ø4.8x12. fixation embout profil	1 Schraube Ø4.8x12. (Profilansatzstück)	1 schroef Ø4.8x12. (top eind stuk)	1 tornillo Ø4.8x12. (terminal tope)	1 spårskruv Ø4.8x12. (Toppdel)	1 vite lamiera Ø4.8x12 (terminale profilato)
8	1 screw M5x12 (base spar)	1 vis Chc M5x12 fixation profil bas	1 Schraube M5x12 (unteres Profil)	1 schroef M5x12 (basisprofiel)	1 tornillo M5x12 (perfil bajo)	1 insex M5x12 (Bottenprofil)	1 vite a brugola M5x12 (profilato basso)
9	12 screws M5x8 (spar connections)	12 vis TF M5x8 liaison profils	12 Schraube M5x8 (Verbindung der Profile)	12 bouten M5x8 (koppelstukken)	12 Tornillos M5x8 (unión perfiles)	12 insex M5x8 (profilkopplingarna)	12 vite M5x8 (collegamento profilati)
10	6 Coupling sleeves	6 pièces de jonction aluminium	6 Verbindungsstücke	6 koppelstukken	6 piezas de uniones	6 Skarvstycken	6 Pezzi di giunzione
11	6 PVC liners	6 profils PVC	6 PVC-Profile	6 PVC binnenprofielen	6 Perfiles PVC	6 Innerprofil i PVC - plastprofil	6 Profilati PVC
12	1 base spar	1 profil aluminium bas	1 unteres Profil	1 basisprofiel	1 perfil bajo	1 Bottenprofil	1 profilato basso
13	5 Intermediate spars	5 profils aluminium intermédiaires	5 Zwischenprofile	5 standaardprofielen	5 Perfiles intermedios	5 Standard profiler	5 Profilati intermedi
14a	1 screw+nut M12x35 => chainplate	1 vis+écrou M12x35 modèle lattes	1 Schraube M12x35 Terminalmontage	1 bunt M12x35 stevenplaatuitvoering	1 tornillo M12x35 (placas)	1 insex M12x35	1 Vite M12x35 Modello Landre
14b	1 Shoudered clevis pin Ø12 (=> turnbuckle)	1 axe épaulé Ø12 modèle ridoir	1 Bolzen, dick Ø12 Stagspannermontage	1 pen Ø12 spanschroefuitvoering	1 Bulón Ø12 (tensor)	1 Riggbult Ø12	1 Asse a testa Ø12 Modello arridatoi
15	15 PVC slide (=> turnbuckle)	15 coulisseau plastique modèle ridoir	15 PVC Rutscher Stagspannermontage	15 PVC-leuwer spanschroefuitvoering	15 patin (tensor)	15 Plasttravare	15 guida in plastica Modello arridatoi