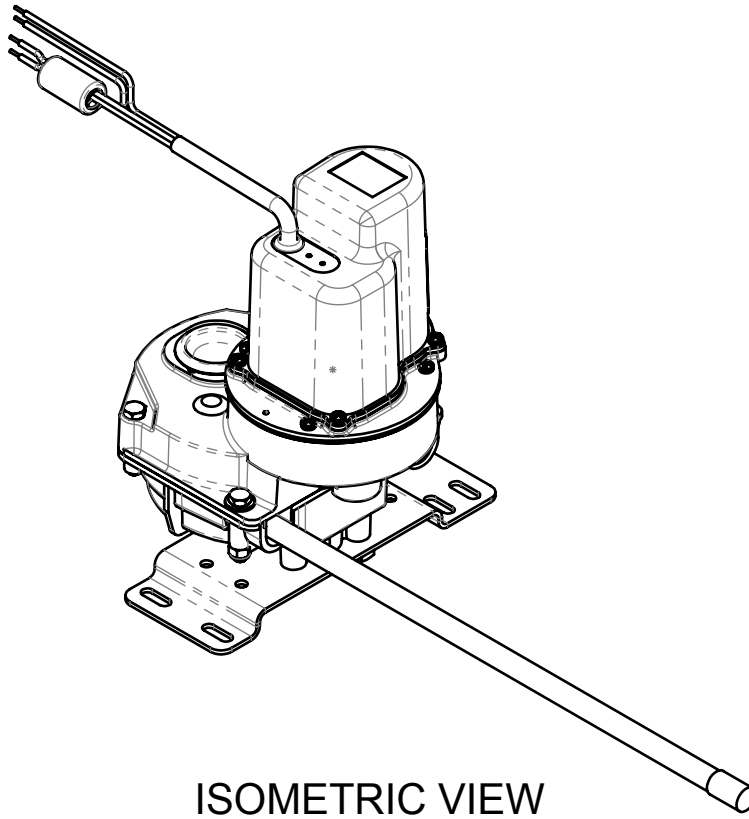
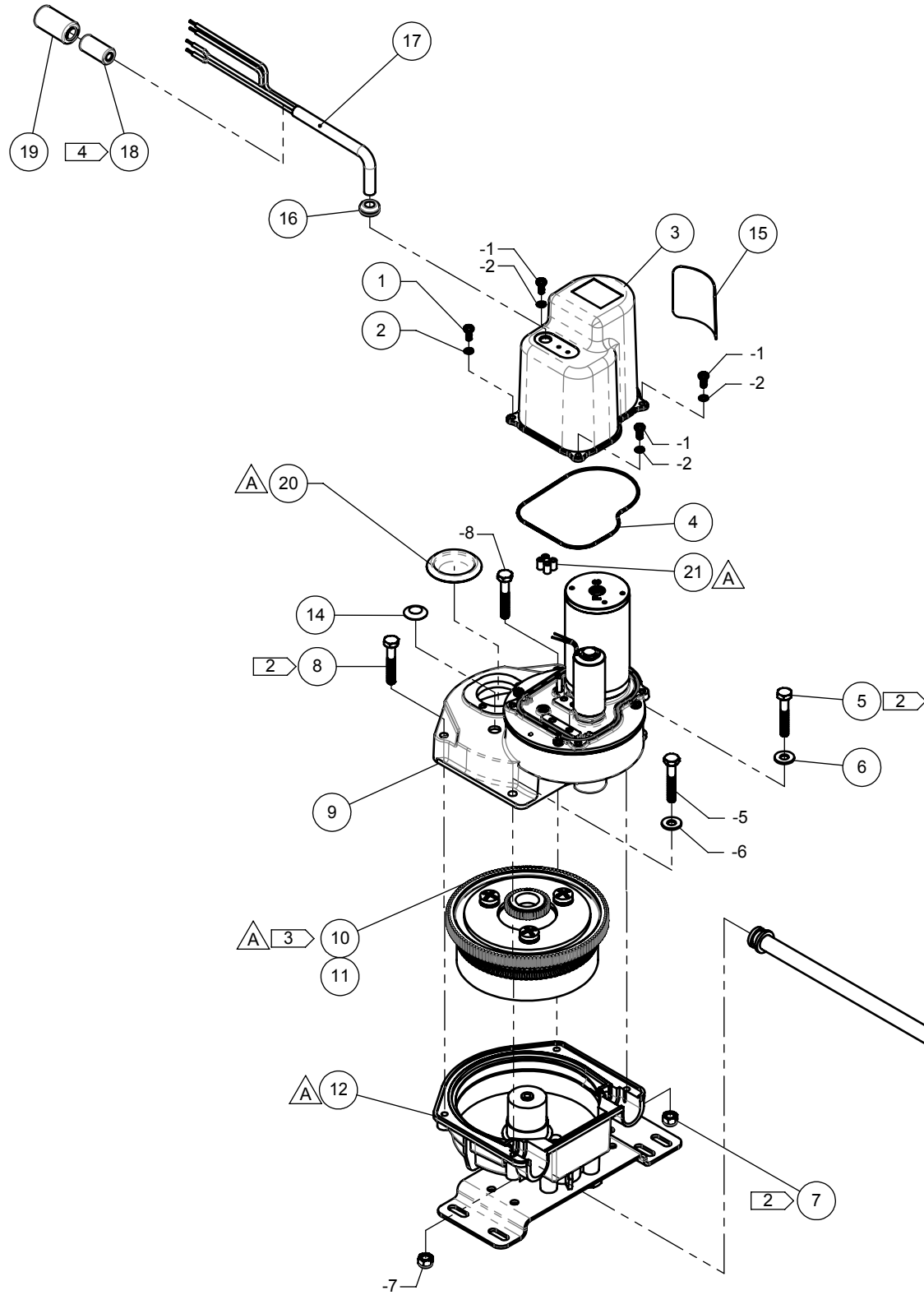


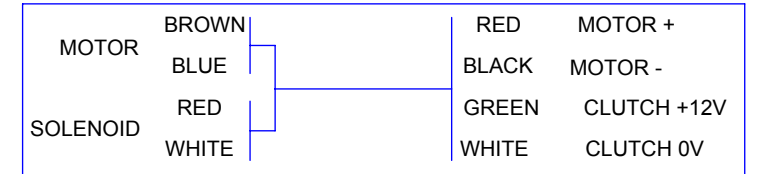
THE INFORMATION CONTAINED IN THIS DRAWING IS THE SOLE PROPERTY OF OCTOPUS PRECISION PRODUCTS INC. ANY REPRODUCTION IN PART OR WHOLE WITHOUT THE WRITTEN PERMISSION OF OCTOPUS PRECISION PRODUCTS INC. IS PROHIBITED.

REVISION HISTORY					
ZONE	REV	DESCRIPTION	DD/MM/YYYY	APPROVED (NAME)	APPROVED (SIGNATURE)
-	NEW	RELEASED FOR PRODUCTION	20/SEP/2011	D.S.	
-	A	REFER TO DCR # 1119.	01/NOV/20112	D.S.	



ISOMETRIC VIEW

WIRE CONNECTION DIAGRAM:

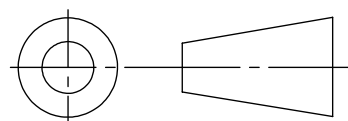


- 1 DO NOT INSTALL CORE TUBE (ITEM 13) - SHIP LOOSE
- 2 TORQUE 2 x HEX BOLTS (ITEM 5), 2 x HEX BOLT (ITEM 8) & 2 x SELF LOCK NUTS (ITEM 7) TO 30-35 INCH POUNDS
- 3 APPLY (ITEM # 7) GREASE AS FOLLOWS:
COVER INTERNAL GEAR TEETH
COVER RADIAL SPIROL CUT GEAR TEETH
GEAR TEETH ON SLIP GEAR
ALL EXPOSED SURFACES ON SLIP GEAR
SLIP WASHER AND SLIP ADJUSTING SCREWS
- 4 ITEM 18 COMES WITH MOTOR. IT NEEDS BE REASSEMBLY ON THE END OF ITME 17.

ITEM	DESCRIPTION	QTY	PID #	DRG #	REV	B/O	VENDOR
21	PARALLEL CONNECT SPLICE AMP 16-14	4	OC15312	n/a	n/a	yes	DIGIKEY99
20	PLASTIC PLUG FOR MAIN HOUSING 1-3/8"	1	OC15259	n/a	n/a	yes	DAEMAR01
19	3/4 DIA. HEAT SHRINK TUBE	1	OC15210	n/a	n/a	yes	ELESON01
18	CE FERRITE FILTER	1	--	--	--	--	--
17	MOTOR / CLUTCH CABLE	2M	OC1557	n/a	n/a	yes	ANICAN01
16	GROMMET - 9/32 DIA.	1	OC1561	n/a	n/a	yes	SPAAUR01
15	LABEL - MDR + SERIAL NUMBER	1	OC15240	n/a	NEW	yes	AMPMAN01
14	PLASTIC PLUG BUTTON - 3/8"	1	OC1529	n/a	n/a	yes	DAEINC01
13	CORE TUBE - RS HELM	1	OC1518A	n/a	n/a	yes	PREIND99
12	HELM ASSY - REMOTE	1	OC15SU05A	OC15SU05A	A	yes	OCTOPUS
11	GREASE - KEYSTONE 86EP2CT G	1	OC1545	n/a	n/a	yes	KAMIND01
10	SLIP CLUTCH ASSY - RFB - GEN II	1	OC15SU07A	OC15SU07A	A	no	OCTOPUS
9	GEARBOX ASSY - RFB - RS	1	OC15SU09B	OC15SU09B	C	no	OCTOPUS
8	BLT HX HD M6-1.0 x 40 - PLATED	2	OC15221	n/a	n/a	yes	INDAST01
7	SELF LOCK NUT 1/4-20 - PLATED	2	OC1580	n/a	n/a	yes	INDAST01
6	WASHER FLAT 1/4 - PLATED	2	OC15192	n/a	n/a	yes	INDAST01
5	BLT HX HD 1/4-20 x 1-1/2 - PLATED	2	OC1591	n/a	n/a	yes	INDAST01
4	"O" RING - REAR COVER - 045-N70	1	OC1531	n/a	n/a	yes	ARTHOM01
3	REAR COVER MOULDING	1	OC15233	OC150036	NEW	yes	CYPSOL01
2	LOCK WASHER - SS # 8	4	OC1542	n/a	n/a	yes	PACFAS01
1	SCREW-PHIL PAN HD - SS #8-32 x 3/8	4	OC1540	n/a	n/a	yes	PACFAS01

UNLESS OTHERWISE SPECIFIED DIM ARE IN IMPERIAL
 3 PL ± .005"
 2 PL ± .010"
 1 PL ± .020"
 NO DECIMAL PLACE OR FRACTIONAL DIM ± .030"
 ANGLE ± 5°. SURFACE ROUGHNESS 125 micro in MAX.
 INTERPRET DRAWING PER: ASME Y14.5M-1994
 ASME Y14.3M-1994
 ASME Y14.1-1995

THIRD ANGLE PROJECTION



POSITION	NAME	SIGNATURE	DATE DD/MM/YYYY
DRAWN	G.L.		22/SEP/2011
CHECKED	D.S.		22/SEP/2011
DESIGN	D.S.		22/SEP/2011
APPROVAL	D.S.		22/SEP/2011

OCTOPUS
 AUTOPILLOT DRIVE SYSTEMS
 A DIVISION OF CANADA METAL (PACIFIC) LTD.

OCTOPUS PRECISION PRODUCTS INC.
 7733 PROGRESS WAY, DELTA, B.C. V4G 1A3
 CANADA

TITLE			
MECHANICAL DRIVE REMOTE			
TYPE RS - MECHANICAL DRIVE			
SIZE	PART IDENTIFICATION NO.	DWG. NO.	REV.
B	OCTAFMDRSRW	OCTAFMDRSRW	A
SCALE	MATERIAL	WEIGHT	SHEET
1:4	N/A	9.30 lb	1 OF 1