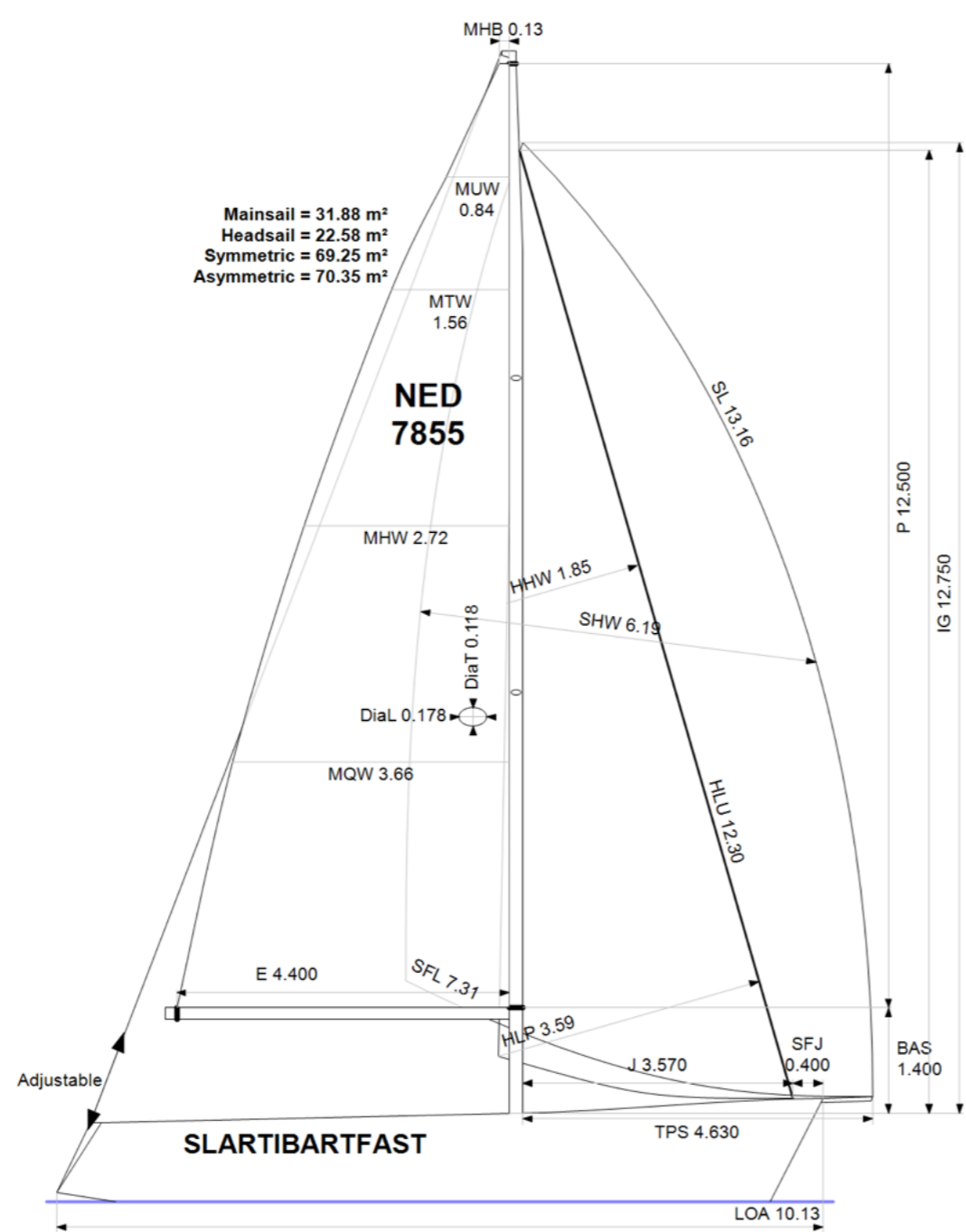




Club
Certificate
2023

Boat
Slartibartfast
NED 7855

Watersportverbond
www.watersportverbond.nl
Wedstrijdsport@watersportverbond.nl



APH: **586.7** CDL: **8.284**
GPH: **659.8** CertNo: **24547**

BOAT	
Class	Winner 1010 x 1.95
Designer	vd Stadt
Builder	Winner Yachts
Age date	01/2006
Series date	01/1999
Offset file	Winner1010-DK.off
Data file	NED7855
HULL	
Length Overall	10.129 m
Maximum Beam	3.320 m
Draft	1.935 m
Displacement	4,471 kg
DLR	6.8648
IMS Division	Cruiser/Racer
Dynamic Allowance	0.240%
Age Allowance	0.487%
PROPELLER	
Installation	Strut
Type	Folding 2 blades
Diameter	0.380m
CREW	
Maximum weight	450 kg
Minimum weight	338 kg * when applied
Non Manual Power	No
Crew Arm Extension	

SAIL AREAS (m ²)	
Mainsail	Measured 31.88 Rated 32.43
Headsail Luffed	22.58 22.58
Headsail Flying	
Symmetric	69.25 69.25
Asymmetric	70.34 70.34
<i>(1 asymmetric(s) with SHW/SFL < 85%)</i>	
STORM SAIL AREAS (m ²)	
Trysail	9.63
Storm Jib	8.13
Heavy Weather Jib	21.95

SAIL LIMITS	
Headsails	5
Spinnakers	4 * Asymmetric SHALL NOT be tacked on the pole
STABILITY	
Righting Moment	N/A
Stability Index	N/A

The owner and any other person in charge is responsible that boat is complying with her certificate in accordance with RRS 78.1 and ORC Rule 304.

Rated boat velocities in knots							
Wind Velocity	6 kt	8 kt	10 kt	12 kt	14 kt	16 kt	20 kt
Beat Angles	43.6°	41.8°	40.2°	39.0°	38.4°	38.4°	39.0°
Beat VMG	3.16	3.87	4.39	4.72	4.85	4.90	4.88
52°	4.85	5.77	6.39	6.74	6.89	6.96	7.00
60°	5.12	6.02	6.58	6.91	7.08	7.17	7.23
75°	5.29	6.20	6.74	7.06	7.29	7.46	7.63
90°	5.41	6.43	6.98	7.30	7.48	7.61	7.97
110°	5.44	6.51	7.09	7.48	7.83	8.12	8.59
120°	5.26	6.35	7.00	7.43	7.82	8.20	8.96
135°	4.73	5.86	6.66	7.16	7.56	7.96	8.83
150°	4.01	5.10	5.99	6.64	7.10	7.47	8.20
Run VMG	3.48	4.42	5.18	5.86	6.47	6.94	7.65
Gybe Angles	144.4°	147.8°	148.4°	159.2°	171.8°	178.4°	179.0°

ORC Ref 04310002FQ7 Issued on 01/04/2023 Valid until 31/12/2023

VPP ver: 2023 1.02 | © ORC | www.orc.org



Club
Certificate
2023

Boat
Slartibartfast
NED 7855

Watersportverbond
www.watersportverbond.nl
Wedstrijdsport@watersportverbond.nl



Time Allowances in secs/NM							
Wind Velocity	6 kt	8 kt	10 kt	12 kt	14 kt	16 kt	20 kt
Beat VMG	1138.2	930.8	819.6	762.2	742.1	734.4	737.3
52°	742.9	623.9	563.8	534.5	522.1	517.2	514.4
60°	703.7	597.9	546.9	521.2	508.2	502.2	497.8
75°	680.1	580.8	534.4	510.1	493.8	482.4	471.8
90°	665.6	560.2	515.6	493.3	481.3	473.0	451.9
110°	662.1	553.3	508.0	481.2	459.9	443.3	419.1
120°	684.1	567.0	514.5	484.8	460.5	439.2	401.6
135°	760.8	614.2	540.2	503.1	476.4	452.4	407.5
150°	896.7	705.2	601.4	542.2	507.1	482.2	439.1
Run VMG	1035.5	814.4	694.4	614.3	556.7	518.4	470.8
Selected Courses							
Windward / Leeward	1086.8	872.6	757.0	688.2	649.4	626.4	604.1
All purpose	835.9	684.1	607.0	564.4	540.3	524.9	504.4

Single Number Scoring Options		
Course	Time On Distance	Time On Time
Windward / Leeward	722.2	0.8308
All purpose	586.7	1.0227

Custom scoring options for Netherlands

Scoring Option	Time On Time
Triple Number Coastal/Long Distance Low	0.7895
Triple Number Coastal/Long Distance Medium	1.0300
Triple Number Coastal/Long Distance High	1.1515
Triple Number Windward/Leeward Low	0.6124
Triple Number Windward/Leeward Medium	0.8370
Triple Number Windward/Leeward High	0.9619
Coastal/Long Distance	0.9395
Predominantly Upwind	0.9410
Predominantly Downwind	1.0135

AUS AUT BRA BUL CAN CYP DEN ESP EST FIN FRA GER GRE HUN
ISR JPN KOR LTU NED NOR POR RSA RUS SLO SUI SWE UKR USA

ORC Ref 04310002FQ7 Issued on 01/04/2023 Valid until 31/12/2023

VPP ver: 2023 1.02 | © ORC | www.orc.org



Club
Certificate
2023

Boat
Slartibartfast
NED 7855

Watersportverbond
www.watersportverbond.nl
Wedstrijdsport@watersportverbond.nl



Data in meters/kilograms (Metric)

HULL AND APPENDAGES (Lightship Trim)			
Class	Winner 1010 x 1.95	LOA	10.129
Measurement	14/11/2007	Max. Beam	3.320
HIN		Draft	1.935
Plan review		Displacement	4,471
Hull construction	Solid	Wetted area	22.49
Carbon Rudder	No	IMS L	8.892
Light stanchions	No	LSM0	8.667
Trim tab	No	Acc. length	10.129
		Sink (kg/mm)	17.23
		VCGD	0.031
		VCGM	108.4
		RM Rated (kg-m)	108.4
		Limit of positive stability(*)	N/A
		Stability Index	N/A

PROPELLER			
Propeller Type	Folding 2 blades		
Installation	Strut	PRD	0.380
Twin screw	No	PBW	0.103
Hydro generator	No	PIPA	0.0034
		EDL	2.000
		ST1	0.055
		ST2	0.176
		ST3	0.170
		ST4	0.099
		ST5	0.310

RIG			
Forestay tension	Aft	P	12.500
Inner stay	None Fitted	IG	12.750
Carbon mast	No	ISP	12.850
Headsail furler	No	MDT1	0.118
Mainsail furler	No	MDL1	0.178
Articulated bowsprit	No	MDT2	
Non-circular rigging	No	MDL2	
Fiber rigging	No	TL	Taper
Runners/Checkstays	0	MW	
Spreaders	2	GO	
Rotating mast	No		
		E	4.400
		J	3.570
		BAS	1.400
		FSD	Foil
		SFJ	0.400
		SPL	3.650
		WPL	
		TPS	4.630
		BD	
		MWT	
		MCG	

FLOTATION AND STABILITY			
Calculation method	RM estimated	SFFP	0.402
Flotation Date	28/09/2009	SAFP	9.545
Measurer		FFM	1.336
Comment		FAM	1.027
		FF	1.352
		LCFsh	5.897
		LCFcl	5.669
		SG	1.0000
		HBI	1.165

ORC Ref 04310002FQ7 Issued on 01/04/2023 Valid until 31/12/2023

VPP ver: 2023 1.02 | © ORC | www.orc.org



Club
Certificate
2023

Boat
Slartibartfast
NED 7855

Watersportverbond
www.watersportverbond.nl
Wedstrijdsport@watersportverbond.nl



MAINSAIL									
Id	MHB	MUW	MTW	MHW	MQW	Area	Meas.Date	Comment	
1	0.13	0.84	1.56	2.72	3.66	31.88	21/06/2018		
HEADSAIL									
Id	HHB	HUW	HTW	HHW	HQW	HLP	HLU	Btn	Flying FT
2021	0.05	0.50	0.95	1.85	2.74	3.59	12.30	No	No
Area	22.58								
SYMMETRIC SPINNAKER									
Id	SLU	SLE	SL	SHW	SFL	Area	Meas.Date	Comment	
02	12.68	12.68	12.68	6.58	6.45	69.25			
ASYMMETRIC SPINNAKER									
Id	SLU	SLE	SL	SHW	SFL	Ratio	Area	Meas.Date	Comment
1	14.17	12.15	13.16	6.19	7.31	85%	70.34		

ORC Ref 04310002FQ7 Issued on 01/04/2023 Valid until 31/12/2023

VPP ver: 2023 1.02 | © ORC | www.orc.org