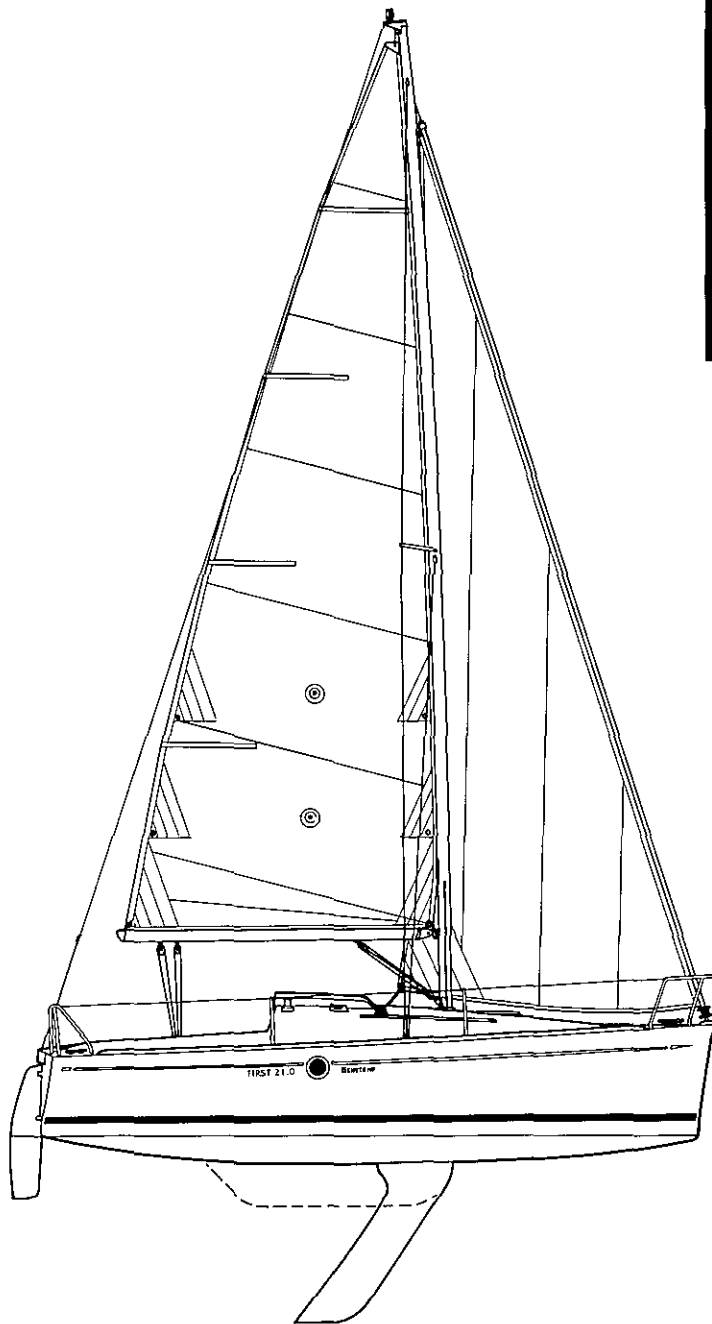


21.0



PROVISIONAL RIG DIMENSIONS

I	28.18'
J	7.87'
P	27.03'
E	9.35'
Sail area (main & 100% jib) ..	243 sq. ft. approx.

PROVISIONAL SPECIFICATIONS

L.O.A.	21'0"
L.W.L.	19'8"
Beam	8'2"
Draft: Keel up	2'4"
Keel down	5'10"
Displacement	2,200 lbs. approx.
Ballast	770 lbs. approx.

SPECIFICATIONS

FIRST 21.0

Provisional equipment listed below, F.O.B. Marion, S.C.

DECK HARDWARE

Stemhead fitting with fairleads
Stainless steel pulpit with red/
green navigation light
Stainless steel stern pulpit
Stainless steel 18" stanchions
Stainless steel lifelines
Wooden foothold on cockpit
seats
Wooden toerails
One forward mooring cleat
Two aft mooring cleats
One round opening hatch
Two jib tracks on coachhouse
with cars
Two triple sheave turning blocks
on coachhouse for halyards
and maneuvering lines
Deck stoppers for main and jib
halyards
Camcleats for boom vang and jib
furler
Two Lewmar 6C winches on
coachhouse
Upper/lower shroud and backstay
chainplates
Double rudder steering system
with tiller and extension
Two cockpit lockers

SPARS AND RIGGING

7/8ths silver anodized
mast and boom
Single set of spreaders
Stainless steel standing rigging
Split backstay with adjusting
tackle
Jib furler

RUNNING RIGGING

Main and jib halyards
Jib sheets
Main sheet with tackle
mounted on cockpit sole

SAILS

Mainsail with 2 reefs, battens
and bag
Furling jib

INTERIOR ACCOMMODATION

White molded interior with
wood trim

Companionway

Fiberglass sliding hatch with
plexiglass skylight
Hinged position for added
headroom in companionway
Hatchboard

Salon

Two single berths with
mattresses
Stowage under cockpit and
berths
Removable table
Two fixed hull portholes

Galley

Single burner stove
Wash basin

Forepeak

Double berth with mattress
Chemical toilet

Keel

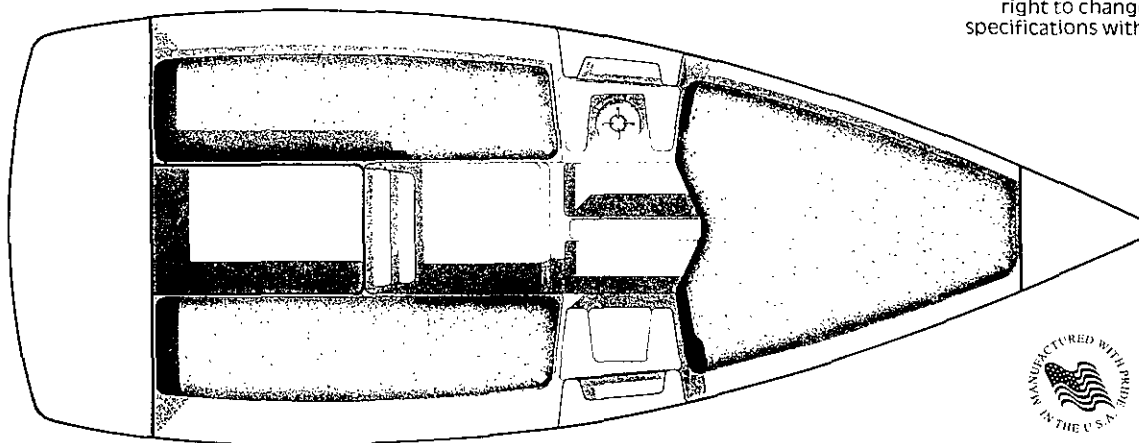
Swing keel with worm gear
lifting system

MISCELLANEOUS

One winch handle
Owner's manual
Beneteau briefcase

**THE UNSINKABILITY OF THE
FIRST 21.0 IS ENSURED USING
FLOTATION FOAM.**

INTERIOR LAYOUT



The manufacturer reserves the
right to change price and
specifications without notice



BENETEAU USA INC. 8720 RED OAK BOULEVARD SUITE 102 CHARLOTTE, NC 28217 FAX (704) 527-0760 PHONE (704) 527-8244

TABLE OF CONTENTS

1. TRAILERING.....	1
2. PREPARING THE MAST.....	1
3. PREPARING THE MAST RAISING GEAR.....	1
4. STEPPING THE MAST.....	2
5. FINAL RIGGING AND TUNING.....	3
6. UN-STEPPING THE MAST.....	3
7. RAISING AND LOWERING THE KEEL.....	4
8. POSITIVE FLOTATION.....	4



BENETEAU

FIRST 21.0 COMMISSIONING MANUAL

1. TRAILERING

Load your First 21.0 on the trailer with the majority of the keel weight resting on the trailer. (Lower the keel onto the trailer using the keel raising/lowering mechanism).

NOTE: Damage to the keel raising mechanism may occur if the boat is trailered, stored or trucked when keel is not supported.

Be sure that the mast is properly secured in the mast cradles.

2. PREPARING THE MAST

1. Attach both the upper and lower shrouds to the mast, insert the upper T-balls into the slots by rotating the fitting 90° and inserting them.
2. Lay the upper shroud along the mast and attach the spreader tip at the point where the shroud and spreader base intersect.
3. Attach the spreaders to the mast and insert the spreader tips.
4. Assemble the furling system following the manufacturers directions.
5. Attach the assembled furling unit and headstay to the mast (marine eye with a clevis pin).
6. Run the backstay bridle through the wire block and attach the block to the backstay. Attach the back stay to the mast head unit (marine eye with a clevis pin).
7. Attach any mast lights or optional equipment to the mast.

3. PREPARING THE OPTIONAL MAST RAISING GEAR (as referred to throughout this manual.)

The mast raising gear consists of a mast raising/lowering spreader bar and rigging to enable one person to step or unstep with ease.

Tie a bowline in the dacron line of the raising/lowering bridle making the overall length from the eye of the bowline to the metal ring (of the bridle) the same length as the spreader bar. This will allow you to pass the eye of the bowline through the outboard ring on the end of the spreader bar and pull the complete bridle through the eye to attach the bridle to the spreader bar. Attach one bridle to either side of the spreader bar.

4. STEPPING THE MAST

1. Remove the mast from the transom mast support frame and secure it to both stern pulpit.
2. Raise the transom mast support to the high position by installing the extension tubes.
3. Return the mast to the aft mast support.
4. Lift the mast off the forward mast support and roll the mast aft on the transom mast support roller until the mast base is at the mast step, then install the mast step pin.
5. Attach all of the shrouds and the backstay to the boat. If this is the first time that the mast is to be stepped leave the turnbuckles 3/4 open. Once the mast has been stepped and tuned correctly you may leave the turnbuckles pinned.
6. Pull out enough of the strap from the trailer to pass over the roller on the aft side of the mast support and up to the mast step.
7. Take the mast raising/lowering spreader bar with the bridle attached onto the foredeck and clip the trailer strap to the bottom ring on the end of the bar.
8. Insert both T-ball studs of the mast raising bridle into the slots on either side of the mast.
9. Set both genoa cars in line with the aft edge of the mast step and run the sheets through the stoppers and genoa cars. Tie the genoa sheets to the stainless rings of the mast raising bridle, leave approx. 14" of sheet from the car to the ring and set the line stops.
10. Clip the spinnaker halyard to the upper ring on the spreader bar .
11. Set the rubber foot of the spreader bar approx. 4" from the bottom of the mast and tension the spinnaker halyard until the angle between the face of the mast and the bar is approx. 85°. Be sure the halyard is firmly secured on the cleat on the mast!
12. The spreader bar will be standing on its own now. Adjust the genoa sheets if necessary to ensure that the spreader bar is centered on the mast.
13. Winch the mast up using the trailer winch. The mast will come up easily and the tip of the spreader bar should be just above the bow pulpit in the upright position. If you cannot get the mast totally up without touching the bow pulpit with the spreader bar then lower the mast back to the mast support and take up on the halyard.
14. Attach the headstay to the stemhead fitting and disassemble the mast raising gear.

5. FINAL RIGGING AND TUNING

1. Be sure all of the threaded studs are clean and greased with Never Seize or a similar compound.
2. Center the masthead first by hand adjusting the upper shrouds, leaving the lowers and backstay loose. You can use a long tape measure on the main halyard to help center the masthead by measuring to the same point on either side of the boat.
3. Tension the upper shrouds equally and then the lower shrouds keeping the mast in column. The FIRST 21.0 has aft swept spreaders. To achieve proper upper shroud tension, pull on the backstay adjuster until there is one foot (1') of bend in the mast, then hand tighten the upper shroud turnbuckles. Release the backstay. You should be left with 4" to 5" of prebend in the mast. Next, use the lower shrouds to bring the mast into column. Be sure the lower shrouds are tight enough to prevent pumping of the mast in waves, or falling off of the mid section of the mast when sailing to weather.
4. Be sure all turnbuckles are pinned and taped after tuning the mast.
5. Install the boom on the gooseneck.
6. Attach the mainsheet and vang following the attached drawings.
7. Run any necessary halyards through the mast step blocks and back to the cockpit.
8. Run the jib furling line back to the cockpit.
9. Bend on the sails.

6. UN-STEPPING THE MAST

1. Remove the sails, running rigging and boom.
2. Reassemble the mast raising spreader bar onto the front of the mast into the same position it was in when the mast was stepped.
3. Set up the transom mast support in the extended position.
4. Tension the trailer winch until you can remove the clevis pin from the forestay.
5. Lower the mast into the mast support using the trailer winch in reverse. It is unnecessary to loosen any turnbuckles before lowering the mast.
6. Remove the maststep pin and roll the mast forward onto the forward mast support and lower the transom mast support into the trailering position.

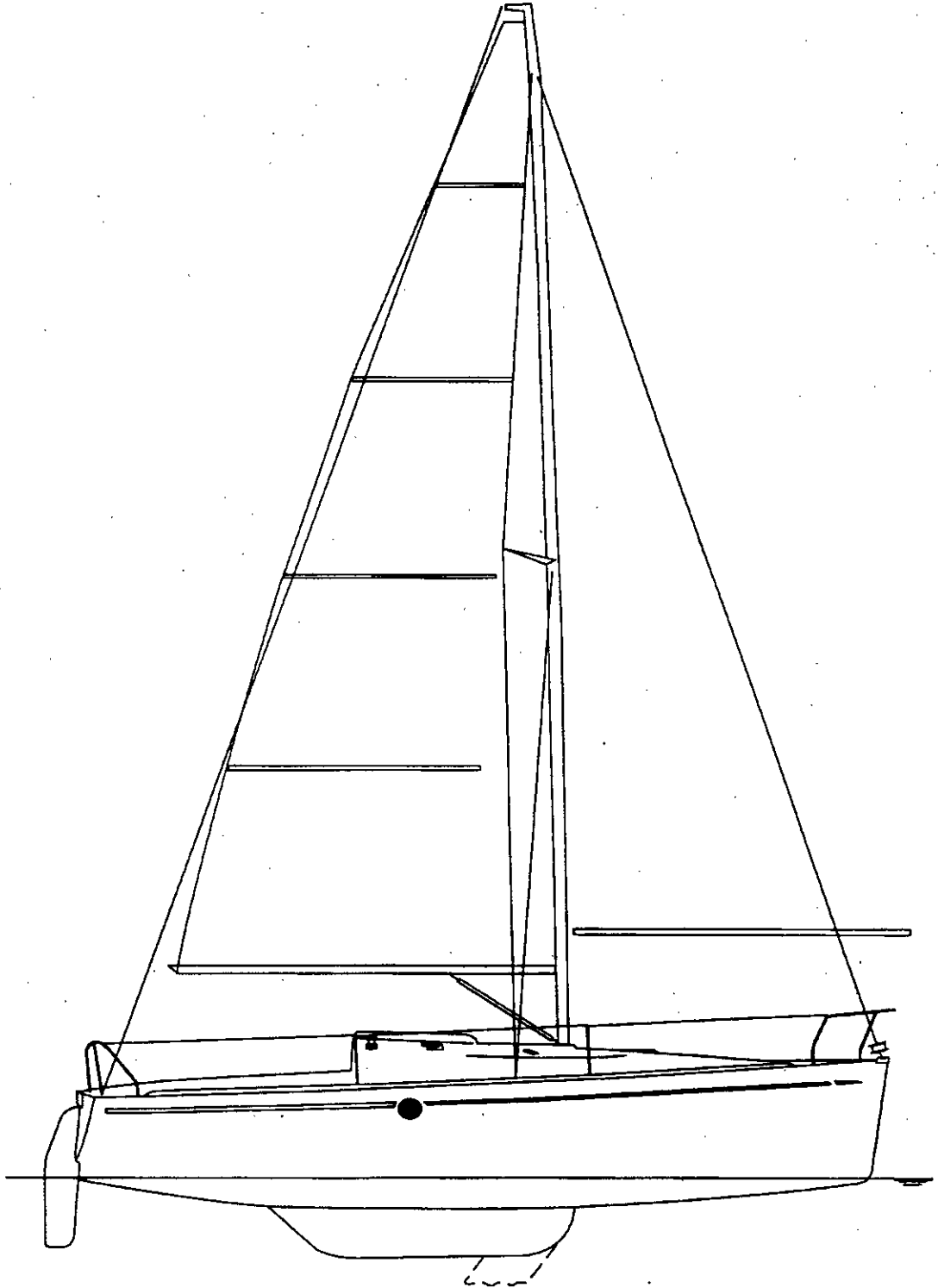
7. RAISING AND LOWERING THE KEEL

The keel is raised or lowered by inserting a winch handle into the socket located on the top aft end of the keel trunk. Turning the winch handle clockwise raises the keel and counterclockwise lowers the keel. Watch the movement of the small ball to determine the position of the keel, when the ball is at it's highest point the keel is fully extended.

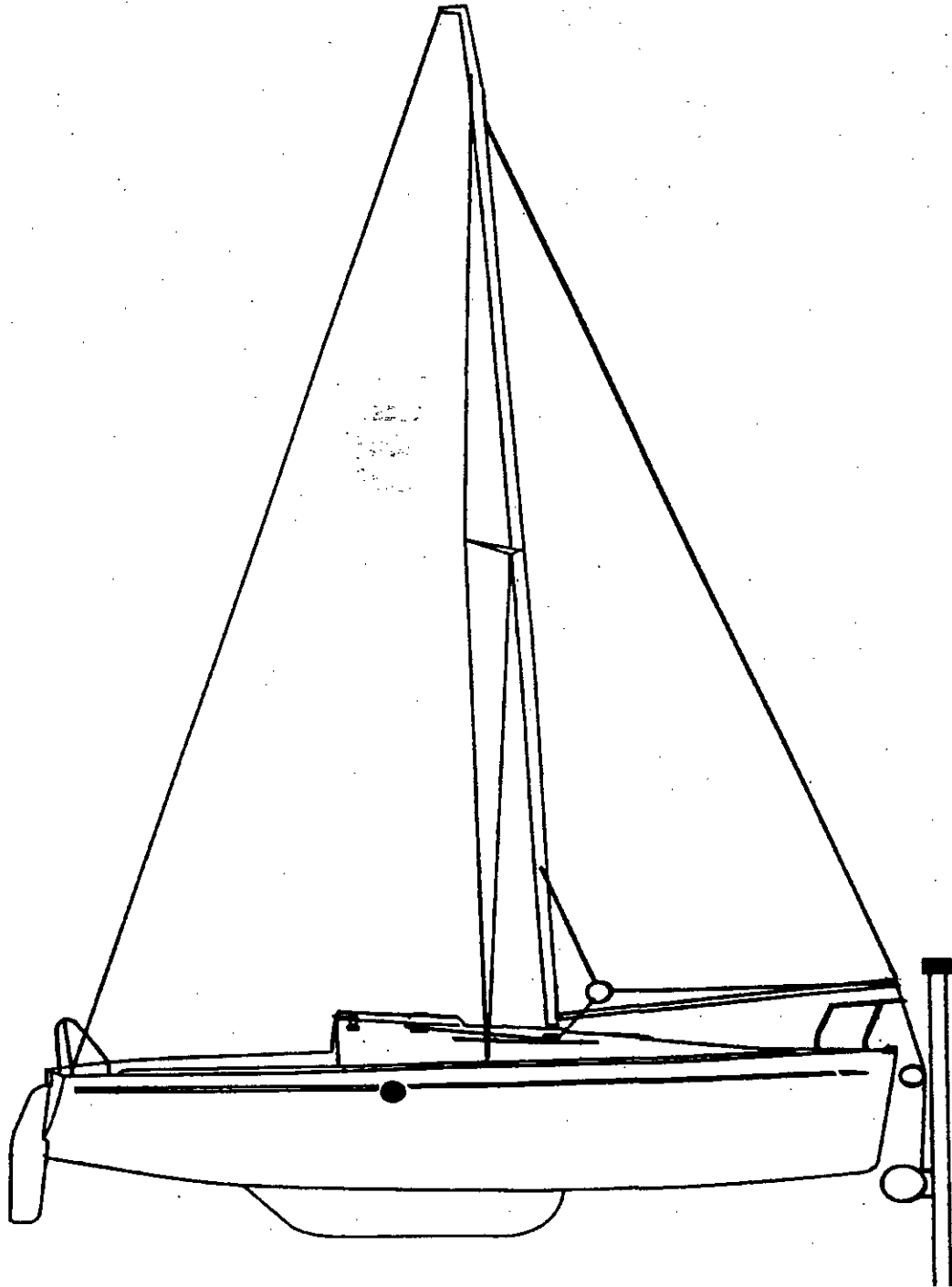
8. POSITIVE FLOTATION

The First 21.0 is equipped with 38 cubic feet of 2lb density foam flotation.

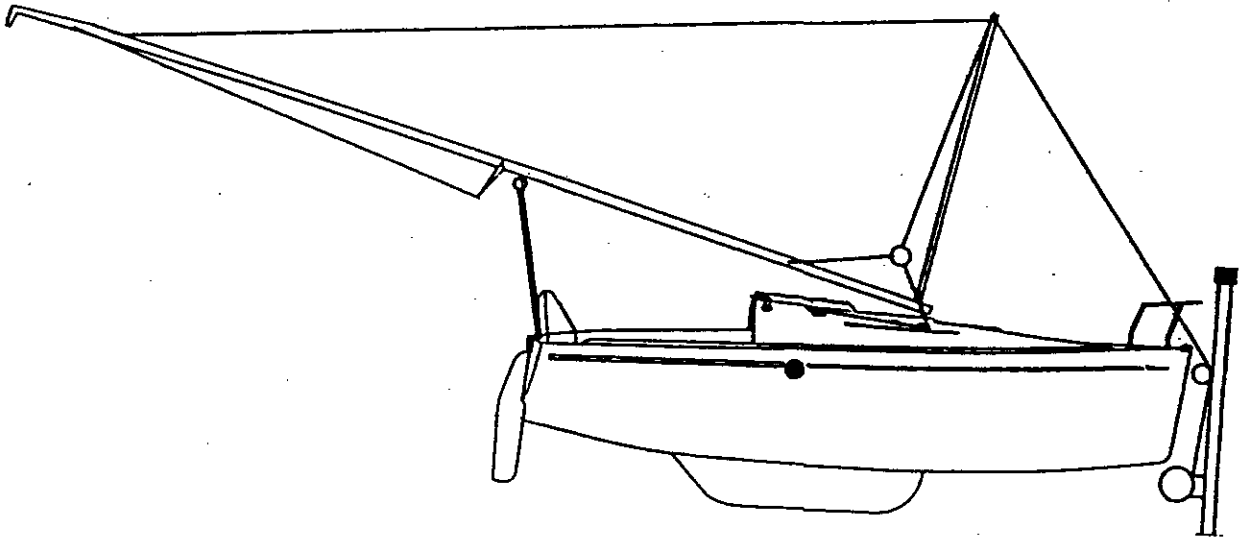
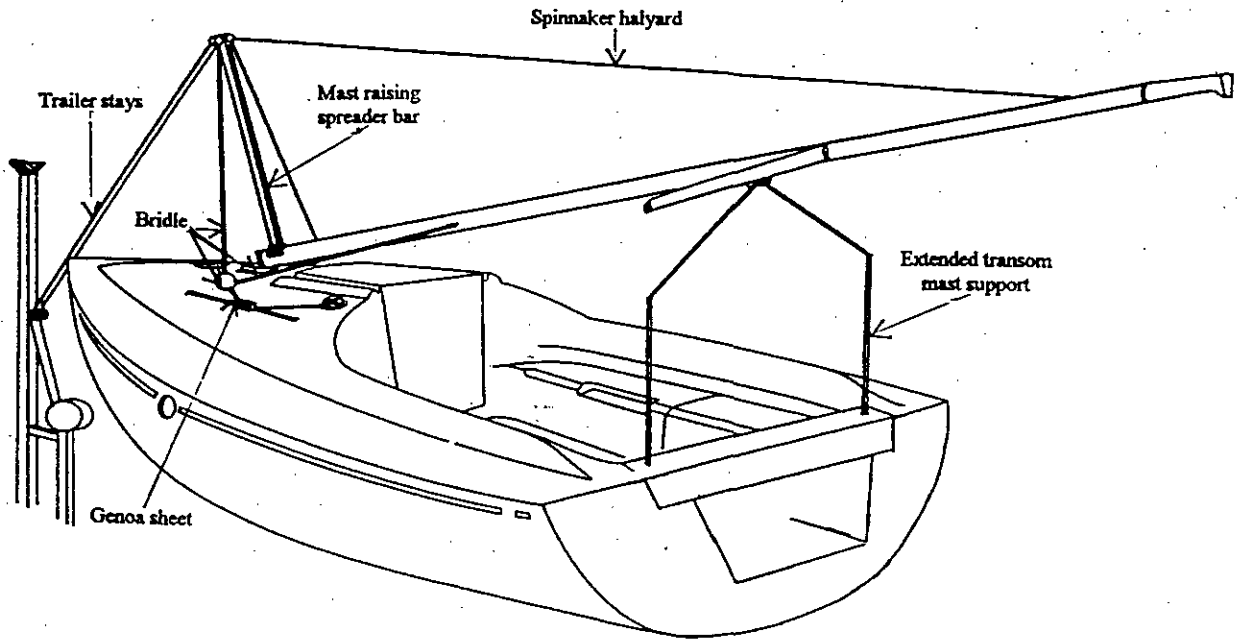
FIRST 21.0
OUTLINE



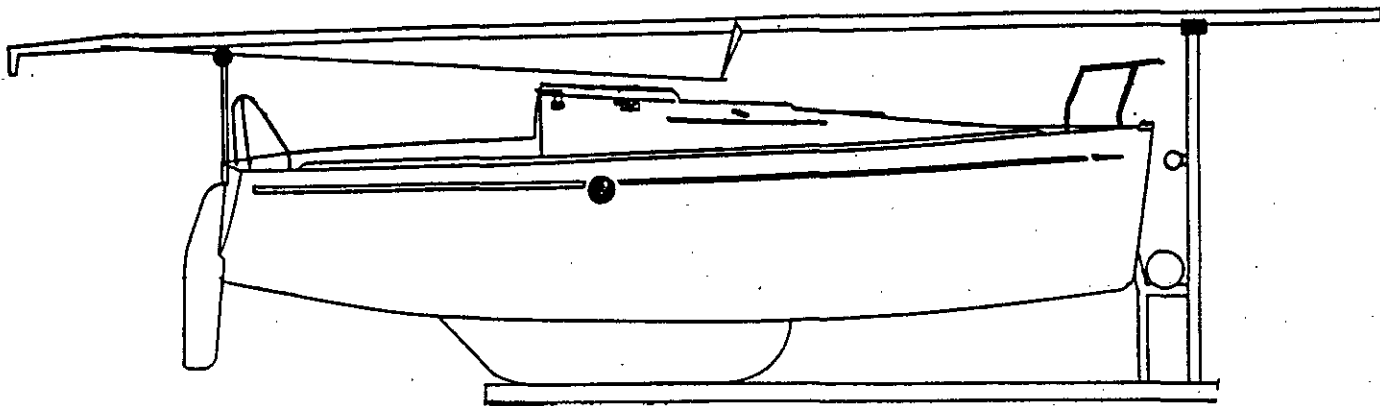
FIRST 21.0
USING THE MAST RAISING GEAR



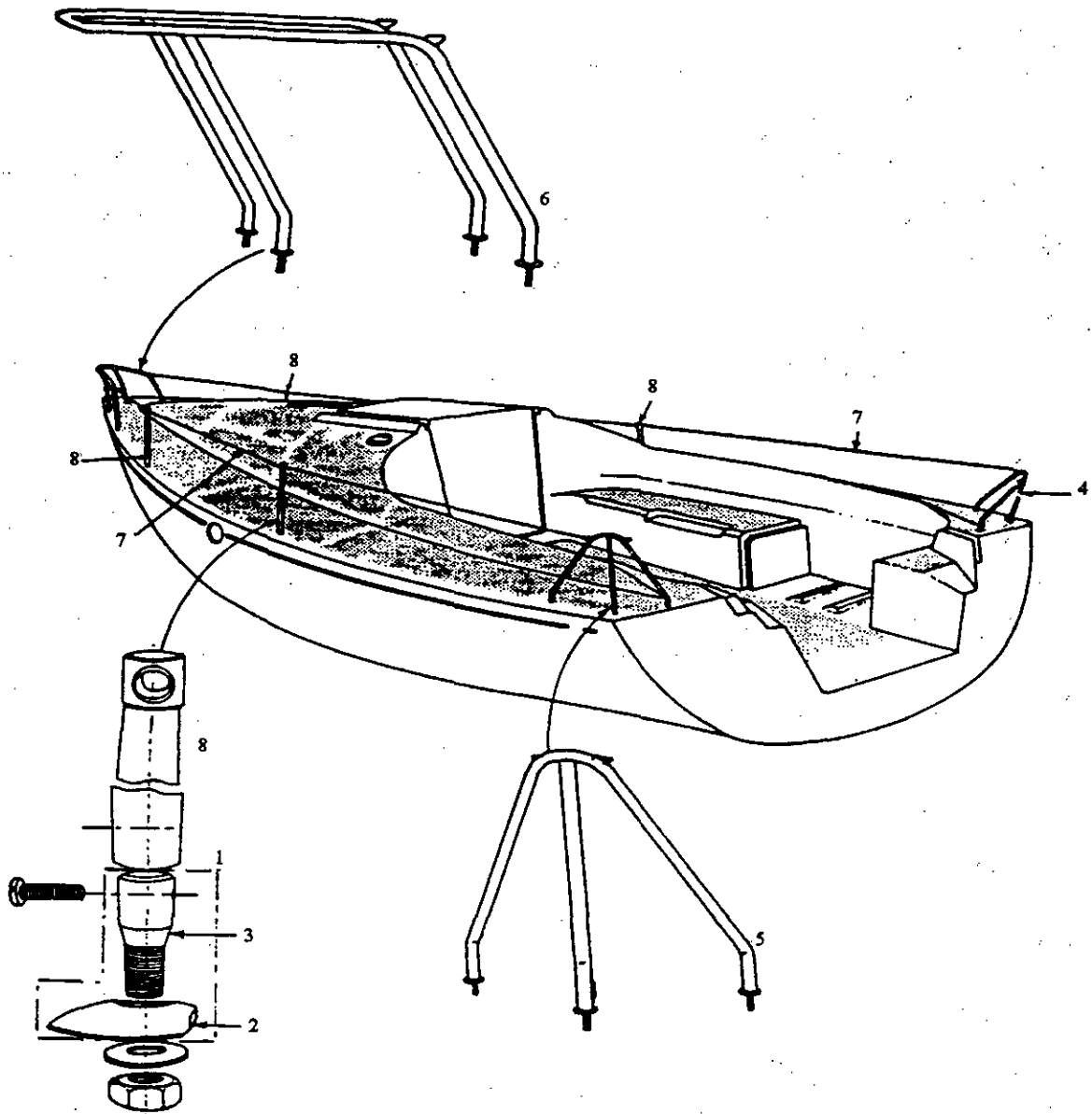
FIRST 21.0 USING THE MAST RAISING GEAR



FIRST 21.0
USING THE MAST RAISING GEAR

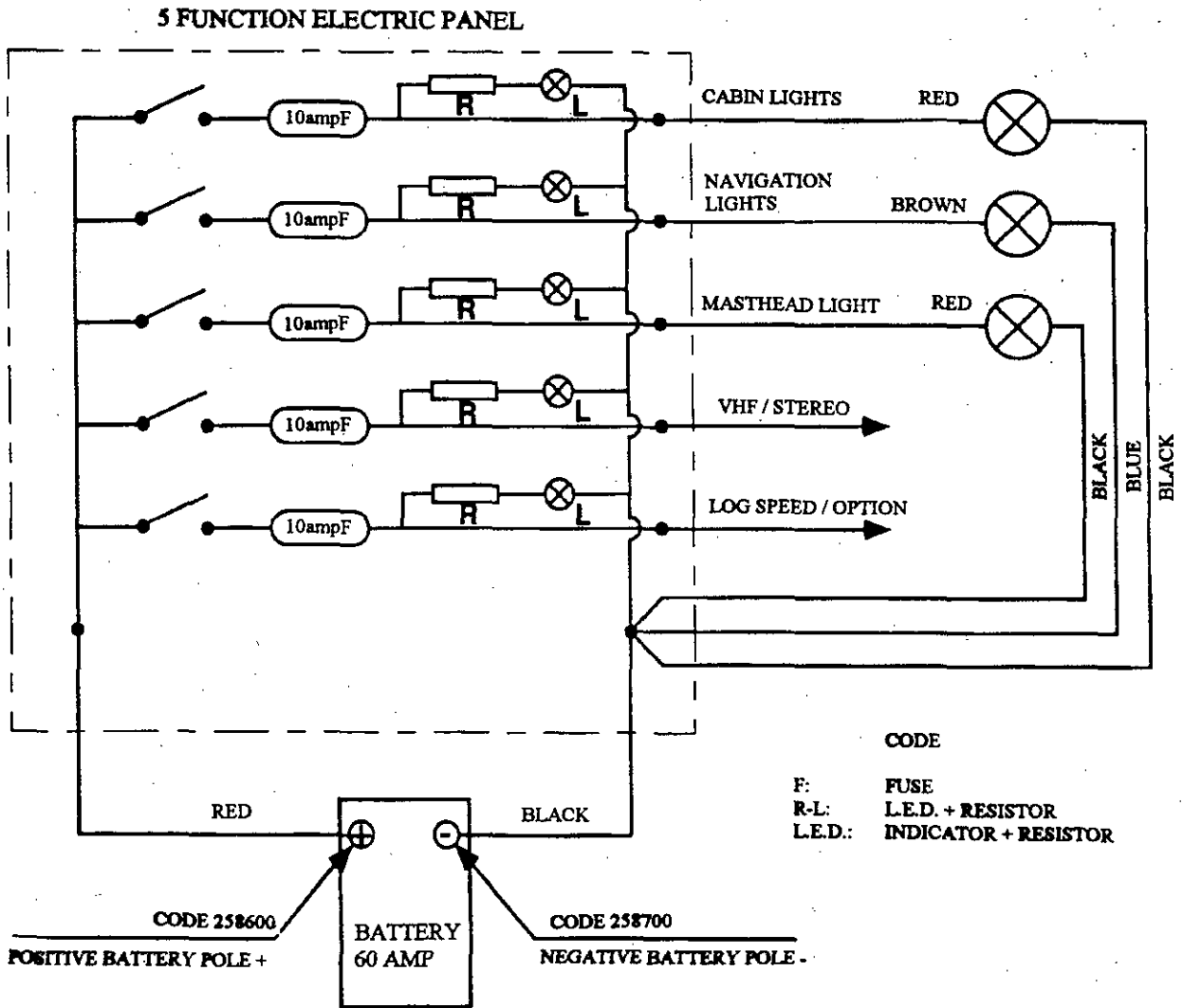


FIRST 21.0 DECK HARDWARE

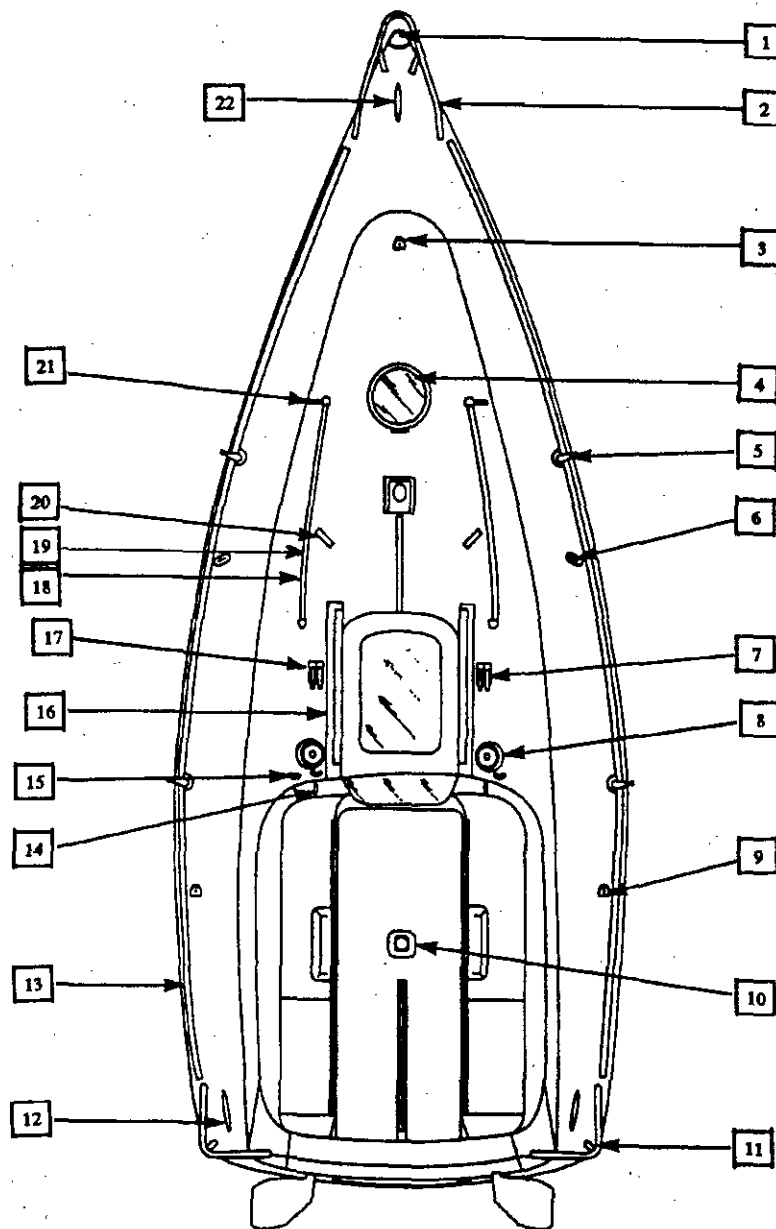


MARK	ITEM CODE	ITEM DESCRIPTION	QTY
001	025333	Base + Pin for alu stanchion D25	4
002	025325	Alu stanchion base D25	4
003	025326	S / S Pin dia 22 lgth 80 M16 / Stanchion	4
004	03041008	Port stern rail 11210	1
005	03041009	Starboard stern rail 11210	1
006	03040003	Bow rail 11210 N° 2	1
007	03054008	Lifeline 11210	1
008	025398	Stanchion lgth 445 inside dia 22	4

FIRST 21.0 ELECTRIC DIAGRAM - PANEL - WIRING CONNECTION

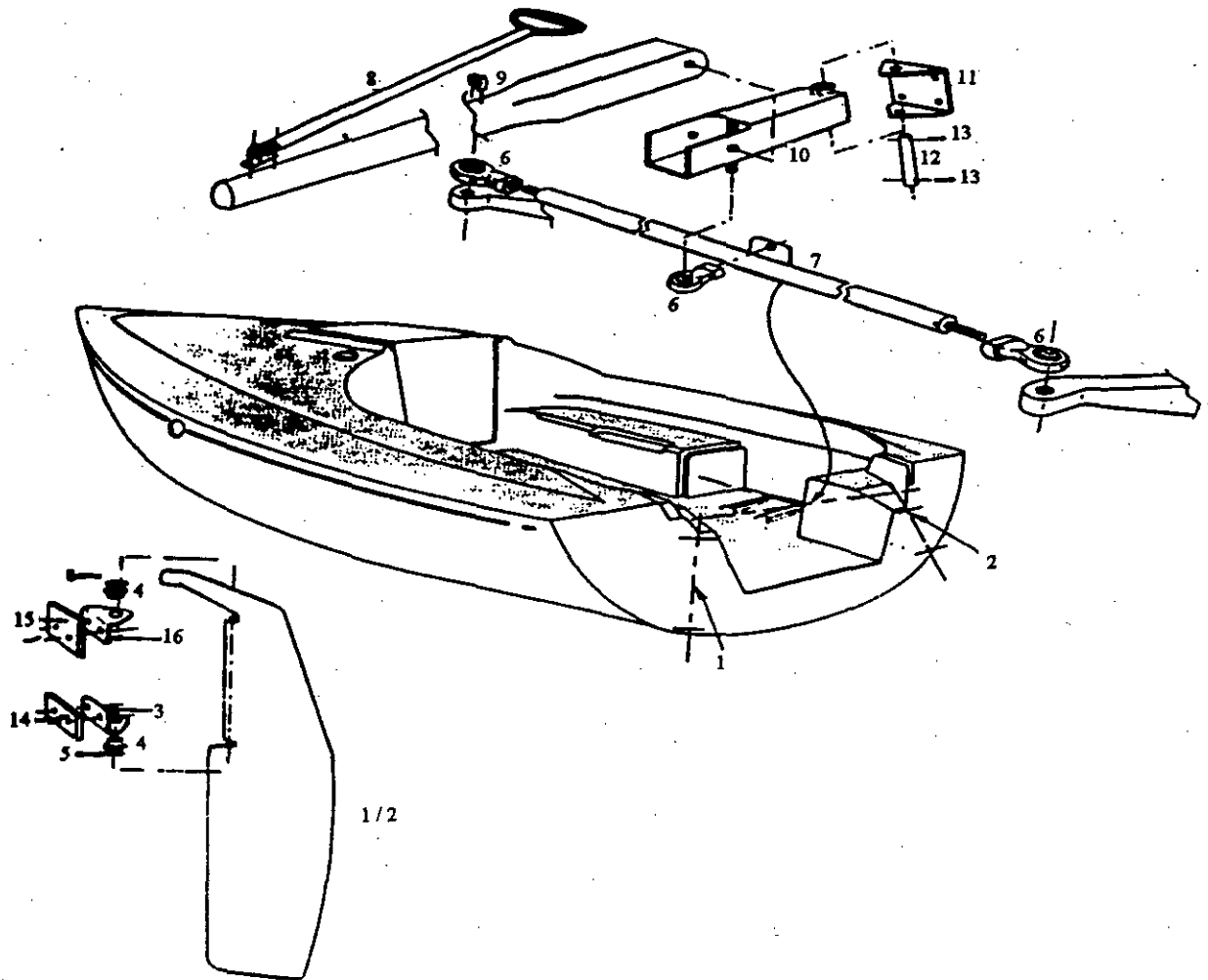


FIRST 21.0 DECK FITTINGS



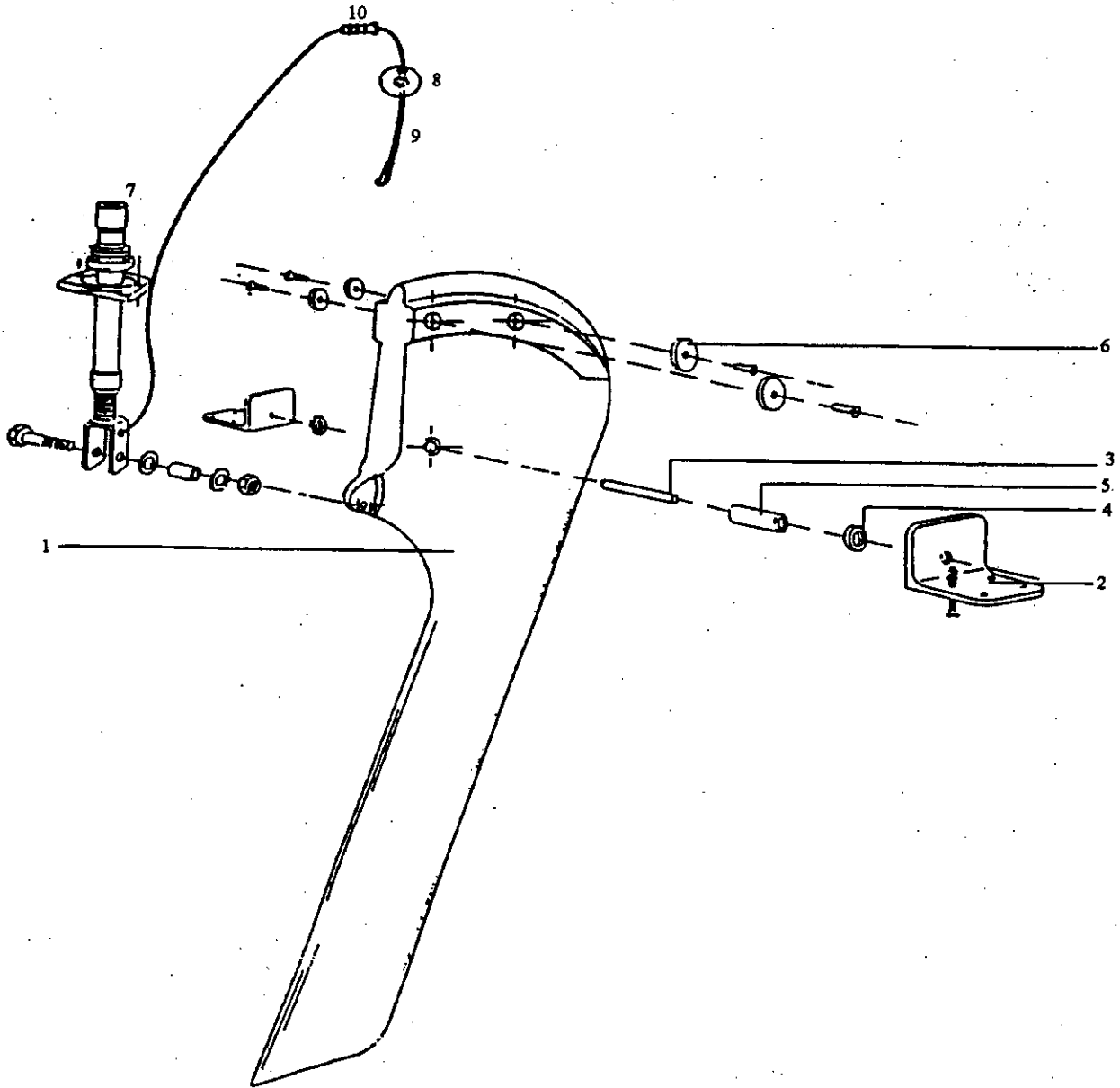
ITEM CODE	ITEM DESCRIPTION	ITEM CODE	ITEM DESCRIPTION
001	025347 Cast aluminum stemhead fitting	012	851790 Mooring cleat
002	03040003 S / S Bow pulpit	013	Wooden toerail
003	003202 Option: Pole downhaul padeye	014	851300 Genoa sheet cleat
004	025396 Round opening hatch	015	08030504 Genoa furling line
005	025398 Stanchion	016	024805 S / S rail
006	025245 Shroud chainplate	017	115508 Option: double deck stopper
007	115508 Double line stopper	018	024866 Genoa track
008	03082157 Lewmar 6C winch	019	025063 Genoa track car
009	003202 Option: Spin. sheet block padeye	020	709600 Triple sheave turning block
010	03091060 Mainsheet block	021	404450 Furler padeye
011	03041009 Stern pushpit starboard	022	851790 Mooring cleat
	03041008 Stern pushpit port		

FIRST 21.0 STEERING SYSTEM



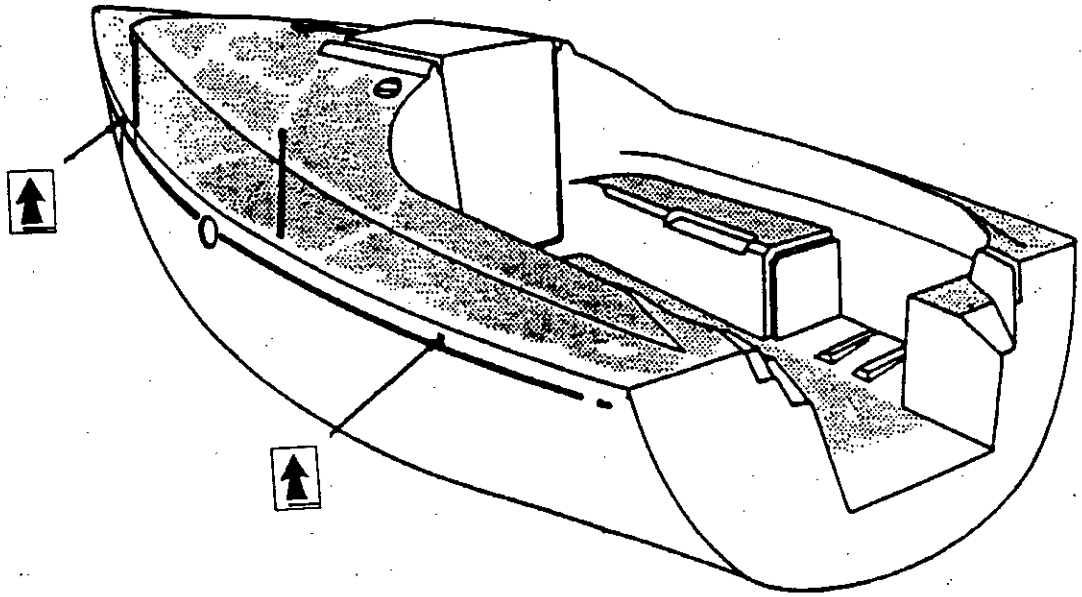
MARK	ITEM CODE	ITEM DESCRIPTION	QTY
001	024828	Port rudder 11210-940	1
002	025855	Rudder 11210-940 starboard	1
003	024802	Rudder gudgeon (Fork) dia 12 35X35X5	2
004	017994	Nylon washer dia 10X20	4
005	467100	S / S Split pin 3X25	4
006	025143	Knuckle female dia 10	3
007	025144	Coupling bar 11210 double rudder	1
008	026030	Tiller extension lgth 0.60 m	1
009	659900	Tiller holder-clip dia 16	1
010	025142	Tiller head 11210	1
011	025145	Fork joint for tiller steering head 11210	1
012	025350	S / S Axle dia 12 lgth 92	1
013	467100	S / S Split pin 3X25	2
014	001603	Alu plate 100X75X10	2
015	007960	Alu plate 100X100X10	2
016	024802	Rudder gudgeon (Fork) dia 12 35X35X5	2

FIRST 21.0 BALLAST

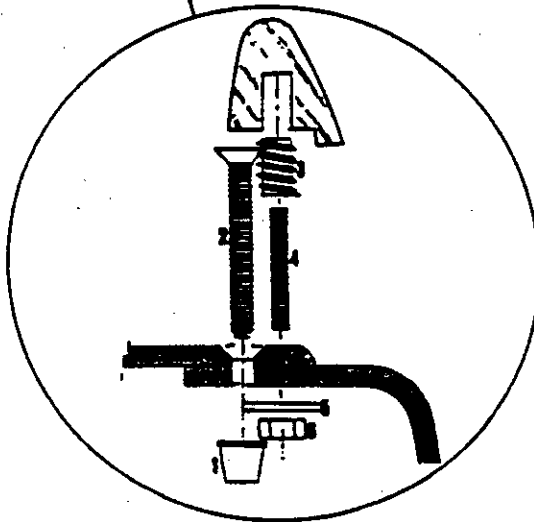
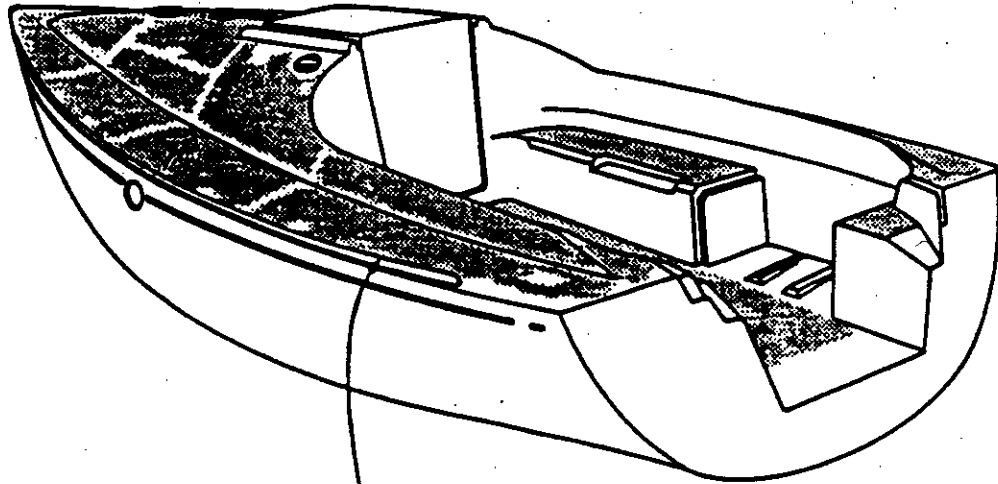


MARK	ITEM CODE	ITEM DESCRIPTION	QTY
001	024577	Centerboard 11210 cast iron	1
002	358800	Centerboard angle plate 100X100X110 F.22	2
003	055010	S / S Axle Dia 22 L 88 11235	1
004	060500	Nylon ring 50X36X11 11180	2
005	427600	Nylon sleeve for centerboard axle lgth 6	1
006	643300	Centerboard pad Dia 58 thickness 10.5	4
007	025141	Centerboard mechanism 11210	1
008	132400	Elastic bungee-cord	1
009	332403	Elastic Dia 5.2 lgth 400 + 2 hooks	1
010	774500	Line ferrule RA 134	1

FIRST 21.0
LIFTING STRAP POSITIONS

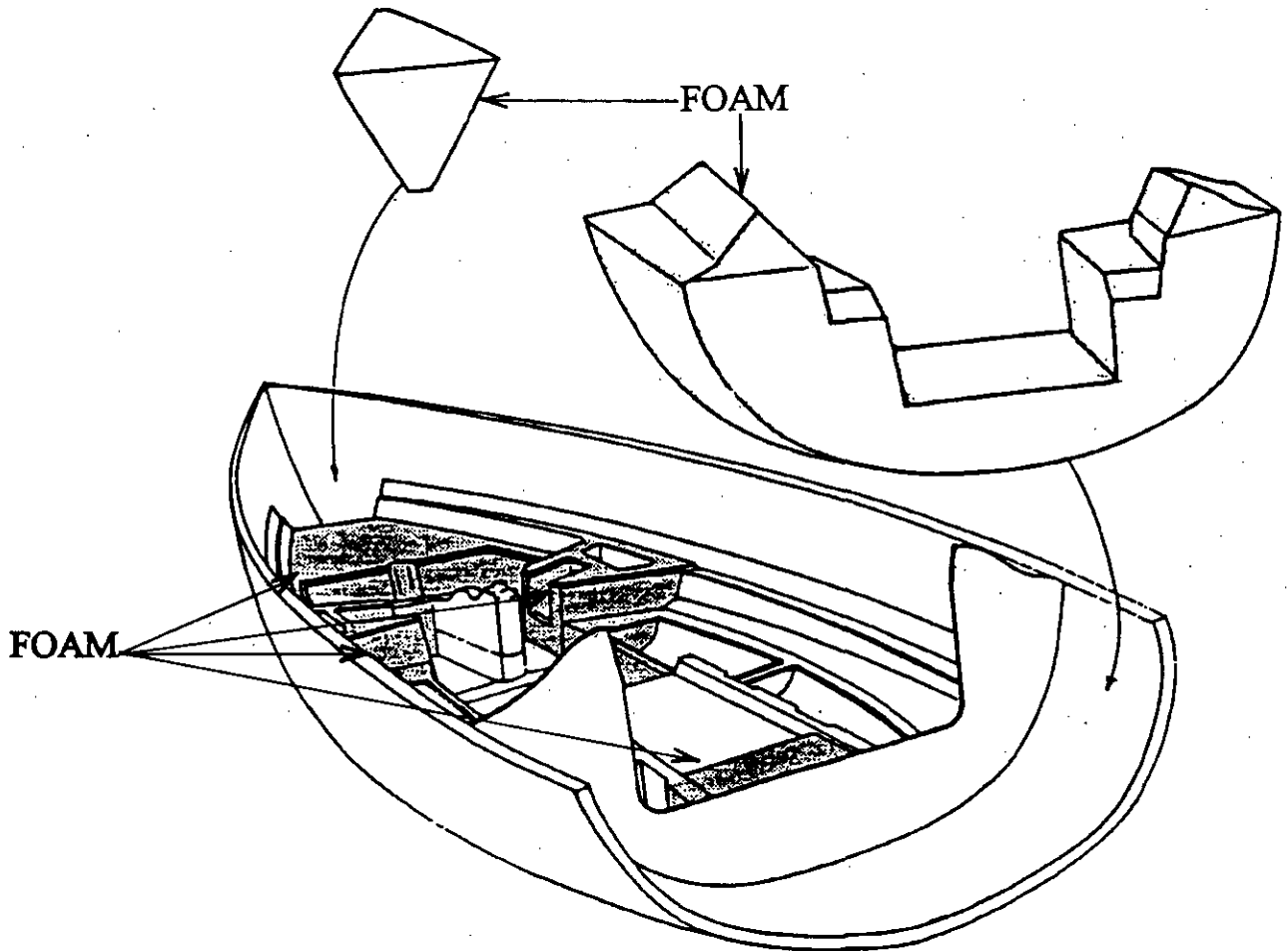
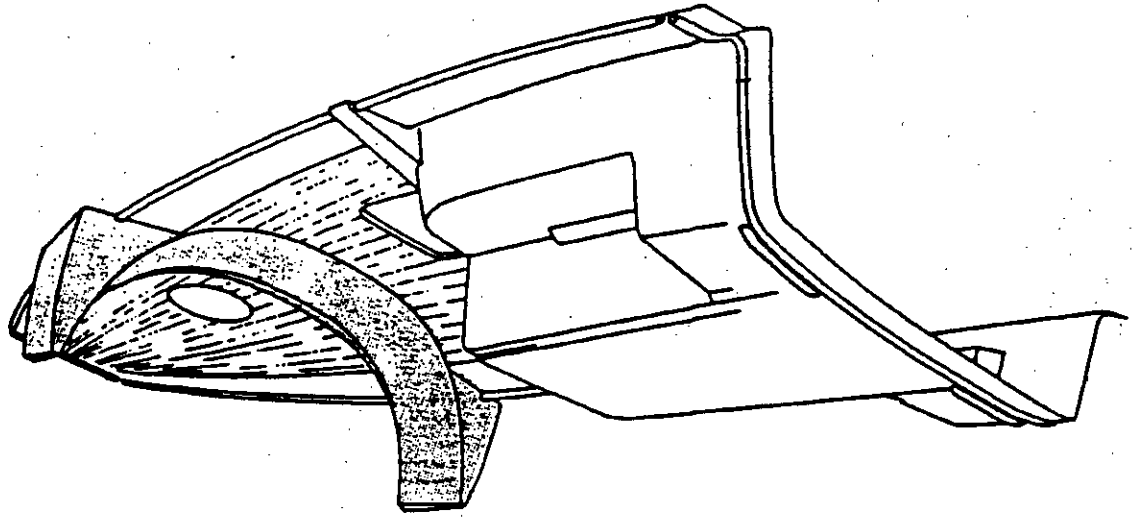


FIRST 21.0
HULL DECK JOINT

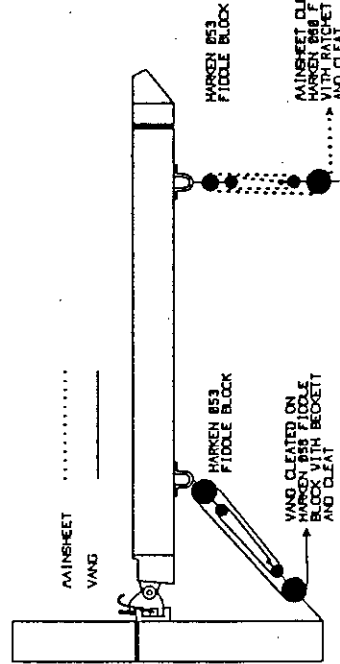


MARK	ITEM CODE	ITEM DESCRIPTION	QTY
001	058420	Ring rivet magna grip F8	68
002	783850	Rivet magna grip dia 6.5	68
003	025921	Brass insert dia 12 lgth 16 M6 int.	36
004	025920	Treaded rod S / S M6 lgth 37 (A2)	36
005	791500	S / S Washer dia 6	36
006	326500	S. Steel hex nut dia 6	36

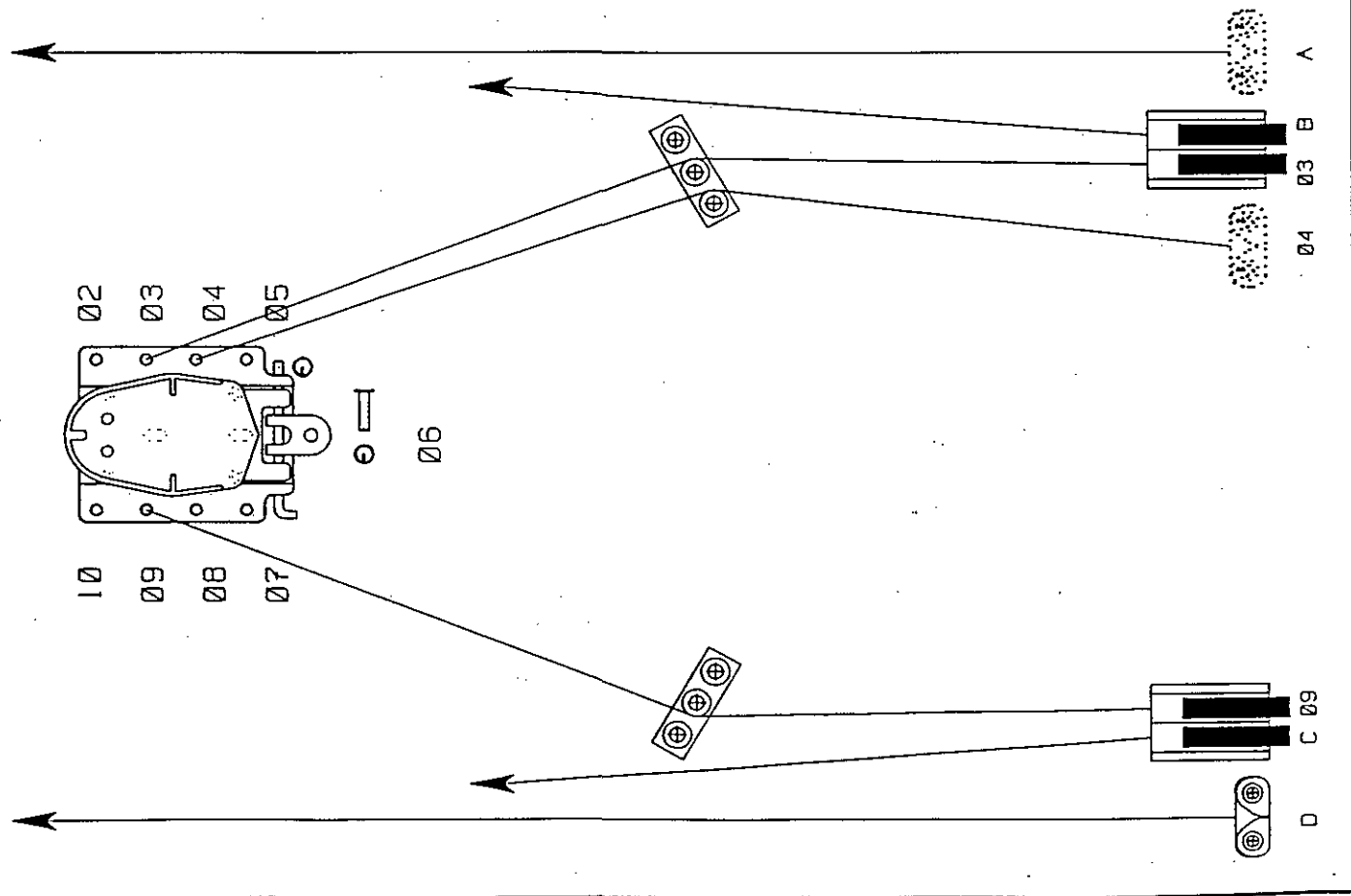
FIRST 21.0
POSITIVE FLOTATION



A	SPINNAKER POLE DOWNHAUL	(OPTION)	Z SPAR 261
B	JIB SHEET	(STANDARD)	NO BLOCK
03	SPINNAKER HALYARD	(OPTION)	Z SPAR 261
04	SPINNAKER POLE TOPPING LIFT	(OPTION)	Z SPAR 261
06	VANG cleated on block	(STANDARD)	NO BLOCK
09	MAIN HALYARD	(STANDARD)	Z SPAR 261
C	JIB SHEET	(STANDARD)	NO BLOCK
D	ROLLER FURLING JIB LINE	(STANDARD)	NO BLOCK
NOTE			
	JIB HALYARD #1 supplied with and hoisted on roller furling system.	(STANDARD)	NO BLOCK
	JIB HALYARD #2 suggest using racing vertical clewcleat on outboard of Jomner B. Slot is provided on mast.	(OPTION)	Z SPAR 261



R Code	Date	Description:	Material:
B Initial Layout	07/05/91	Scale: None Gen. Tol. None	N/A
		DECK LAYOUT F210	Design date 10/14/92
		BENETEAU INC P.O. Drawer 1218 Marion, SC 29571 (803) 423-4201	By BADB
			Part No. 2101A000



THIS DOCUMENT IS PROPRIETARY - REPRODUCTION MUST BE AUTHORIZED BY BENETEAU

MESSINGER
 MAIN BOOA TOPPING
 LIFT CHEEK BLOCK
 #3252

MAIN BOOA TOPPING
 LIFT CUT-OUT

4mm T BALL
 BACKING PLATE

TRIPLE COASI
 SHEAVE BOX
 #3283

STEAMING LIGHT
 #3172

2 CORE CABLE

SPI POLE TOPPING
 LIFT SHEAVE BOX
 #3032

SPREADER PLATE
 WITH SPREADER BAR
 #3177

4mm T BALL
 BACKING PLATE

MAIN HALYARD

3mm T BALL
 BACKING PLATE

MAIN BOOA TOPPING
 LIFT

SPI POLE RING
 #3002

PLASTIC BOLT
 ROPE FEEDER

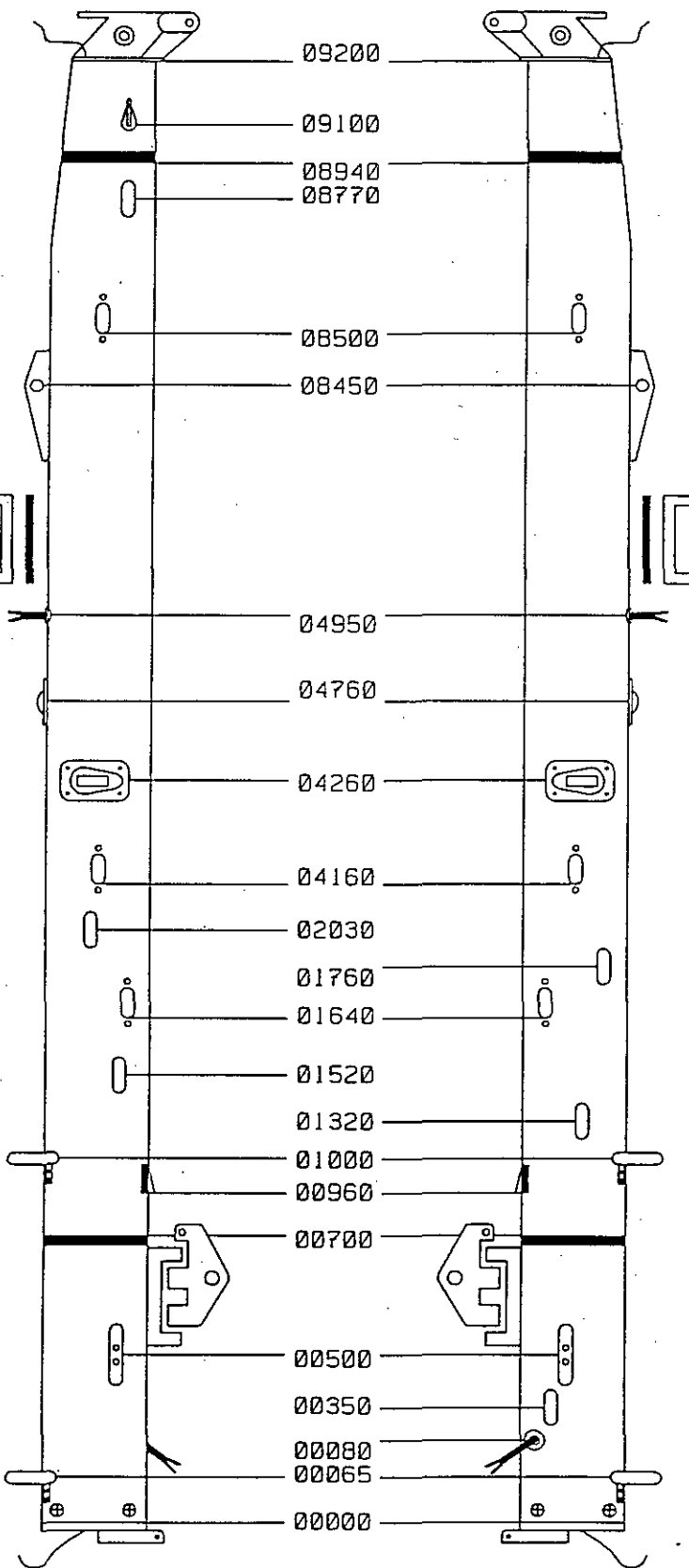
100mm CLEAT
 #3279

2 CORE CABLE
 FOR STEAMING
 LIGHT IN SMALL
 PVC CONDUIT

SPI POLE RING
 #3002

MAST STEP
 FASTENED WITH
 4x6mm MACHINE
 SCREWS + LOCTITE

MESSINGER
 IN SMALL
 PVC CONDUIT

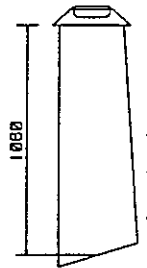


JIB
 HALYARD

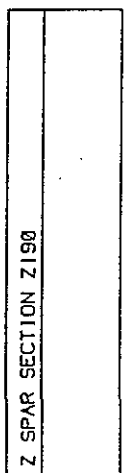
SPINNAKER
 HALYARD
 UPPER
 SHEAVE

100mm CLEAT
 #3279
 FOR MAST
 RAISING AND
 LOWERING

SPI POLE
 TOPPING
 LIFT

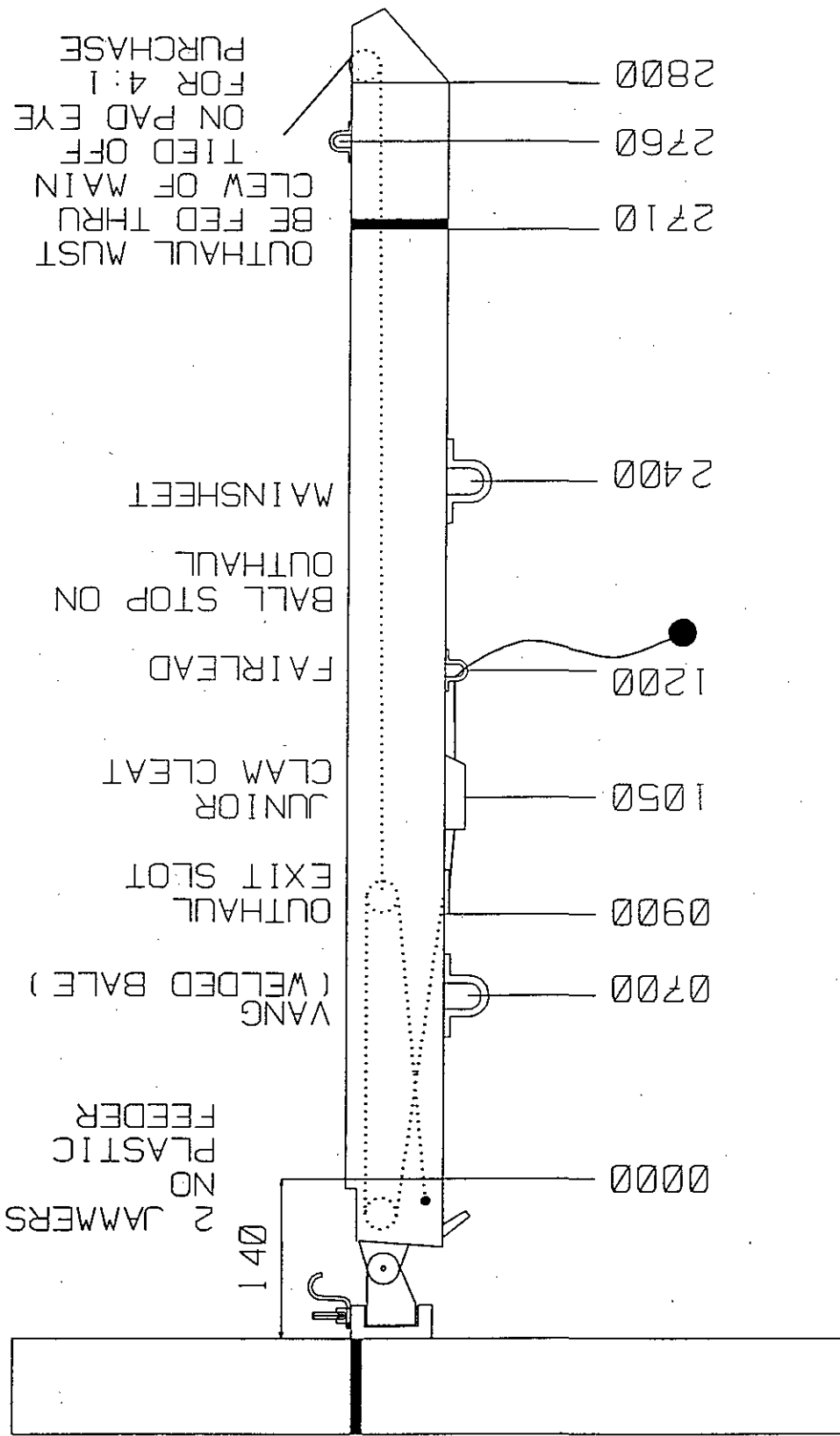


Spreader Angled 20 Degrees



R Code	Date	Description:	Material: Z-Spar	
			Design date	View
0 PROTOTYPE	09/13/92	MAST F210	09/13/92	By BADD
		Scale: None		Gen. Tol.: None
		Also Shown Part #'s 11060084 Steaming Light		
		BENÉTEAU USA P.O. Drawer 1218 Marion, SC 29571 (803) 423-4201		
		PerL No. 08011210		

THIS DOCUMENT IS PROPRIETARY - REPRODUCTION MUST BE AUTHORIZED BY BENÉTEAU



Z SPAR SECTION Z160

BOOM SUPPLIED WITH 2 REEFING LINES JAMMED AT GOOSENECK AND 2:1 OUTHAUL JAMMED ON CLAMCLEAT ON BOOM

- REEF 1 = ----- (RED) STARBOARD | 6mm Dia
- REEF 2 = ----- (GREEN) PORT | 6mm Dia
- OUTHAIL 1 = ----- (BLACK) MIDDLE | 6mm Dia
- OUTHAIL 2 = ----- (BLACK) EXIT SLOT | 5mm Dia

R Code	Date	Dimensions in millimeters		Material: Z SPAR
		Scale: None	Gen. Tol. N/A	
0 PROTOTYPE	09/13/92	F210 BOOM		Design date 09/13/92
		BENEATEU INC. P.O. Drawer 1218 Marion SC 29571 (803) 423-4201		By BAOB
				Part No. 08010210

THIS DOCUMENT IS PROPRIETARY - REPRODUCTION MUST BE AUTHORIZED BY BENEATEU

SYSTEM SUPPLIED
REEVED WITH
3 METERS OF
3/16" WHITE
SAMSON LS LINE

15.5 x 5mm SS
FLAT PLATE
MIRROR FINISHED

5.0mm HOLE

5.0mm HOLE

NICRO FICO
NF12402
5.0mm D
SHACKLE

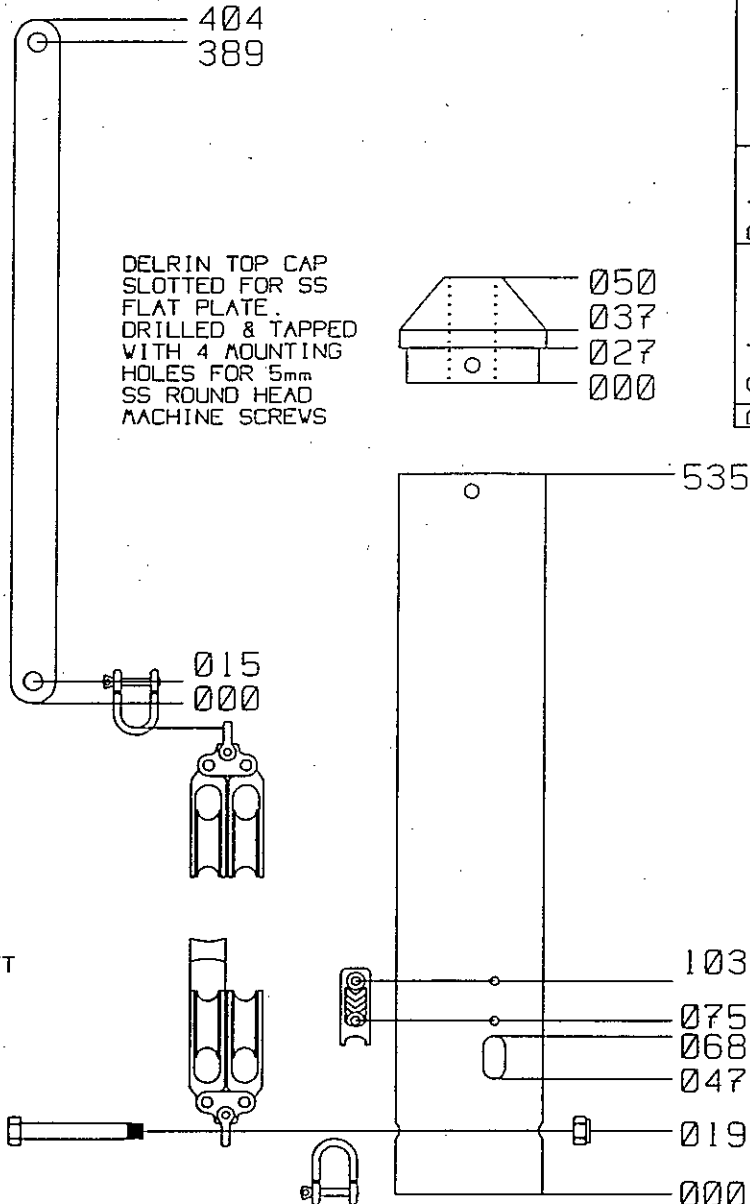
HARKEN 226
DOUBLE BLOCK
WITH WICHARD
D SHACKLE

HARKEN 227
DOUBLE BLOCK & BECKETT
WITH WICHARD
D SHACKLE

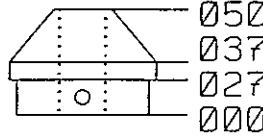
ALUMINIUM RACING
JUNIOR CLACLEAT
AK-II RIVETTED
TO ALUMINIUM TUBE

1/4" x 1 1/4" SS BOLT
WITH 1/4" NYLOC NUT

NICRO FICO
NF12402
5.0mm D
SHACKLE

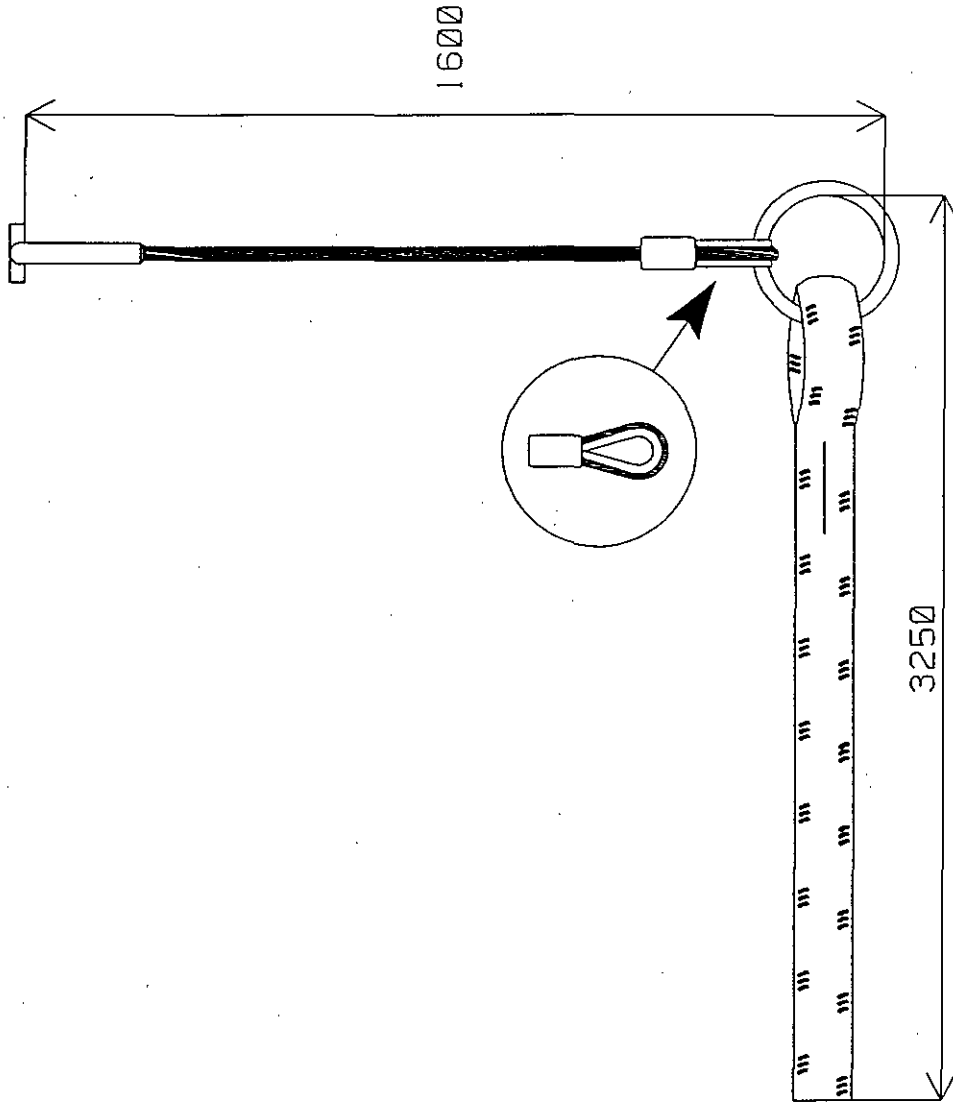


DELRIN TOP CAP
SLOTTED FOR SS
FLAT PLATE.
DRILLED & TAPPED
WITH 4 MOUNTING
HOLES FOR 5mm
SS ROUND HEAD
MACHINE SCREWS



R Code	Date	Material: S.C.A.	
	07/20/92	Design date	View
0 PROTOTYPE	Scale: NONE	Gen. Tol.: NONE	07/20/92
	4:1 BACKSTAY ADJUSTER 5mm PIN (1535x40x051)		By: BAOB
BENETEAU INC. P.O. Drawer 1218 Marion, SC 29571 (803) 423-4201		Part No. 08049002	

THIS DOCUMENT IS PROPRIETARY - REPRODUCTION MUST BE AUTHORIZED BY BENETEAU

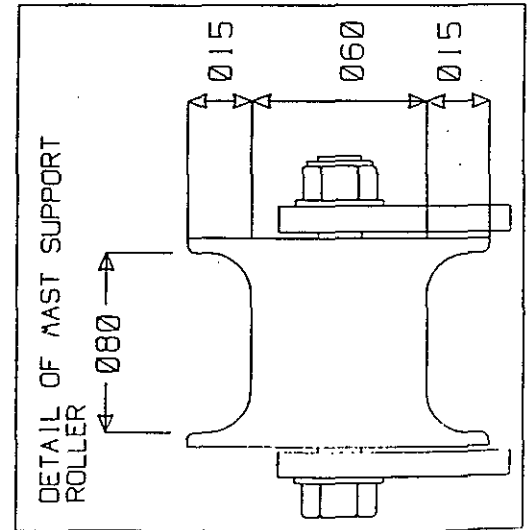
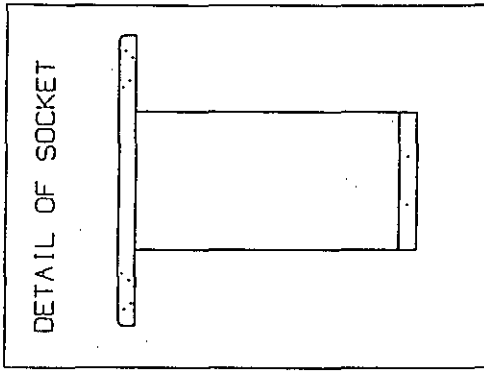
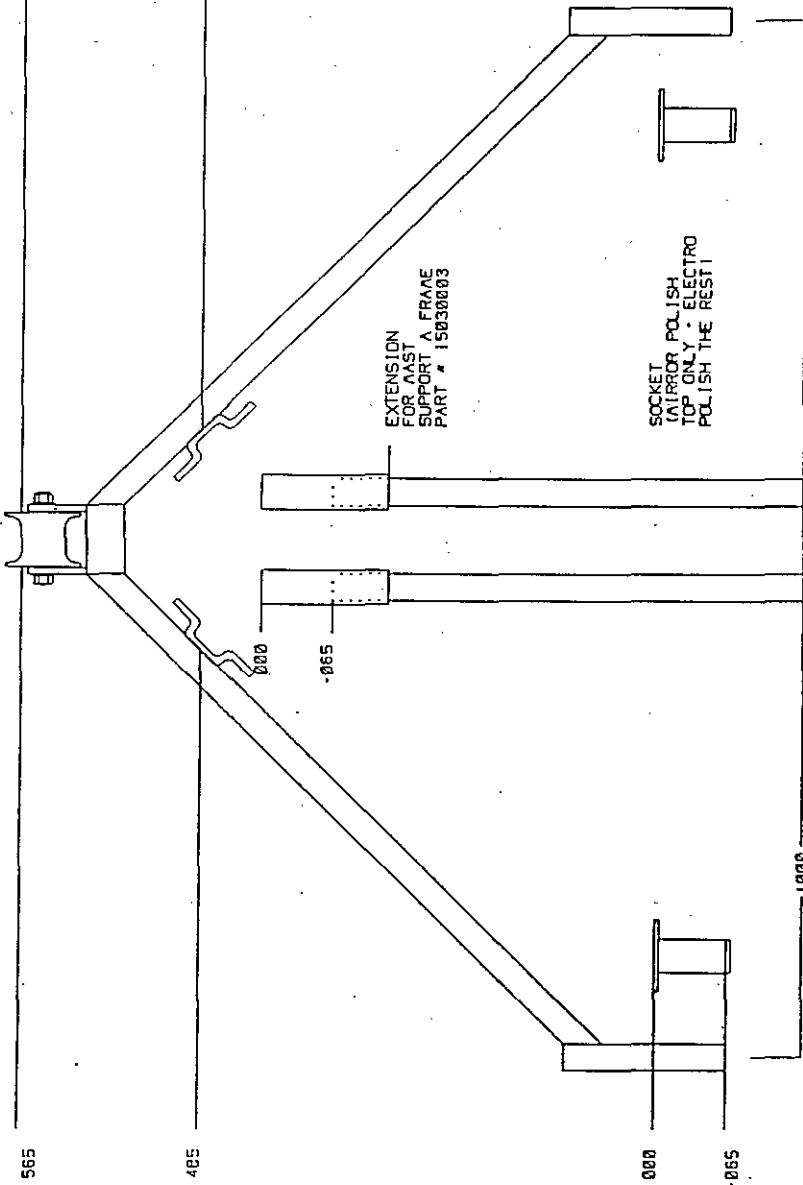


R Code	Date	Dimensions in: millimeters	Material: ISOMAT
0 PROTOTYPE	10/27/92	Scale: NONE	Design date: 10/27/92
1 1400 to 1600	12/23/92	Gen. Tol.: NONE	By: BADB
		MAST RAISING/LOWERING BRIDLE F210	
		BENÉTEAU INC. P.O. Drawer 1218 Marion, SC 29571 (803) 423-4201	
		Part No: 08020123	

THIS DOCUMENT IS PROPRIETARY - REPRODUCTION MUST BE AUTHORIZED BY BENÉTEAU

565 TOP OF ROLLER

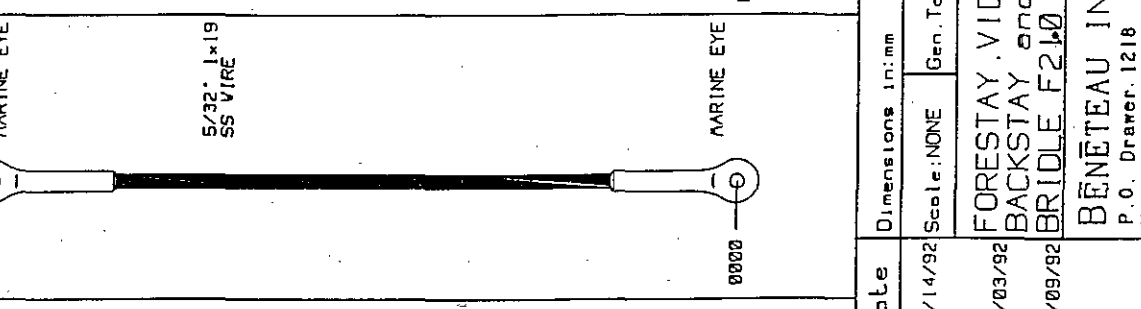
485 TIE DOWN CLEAT



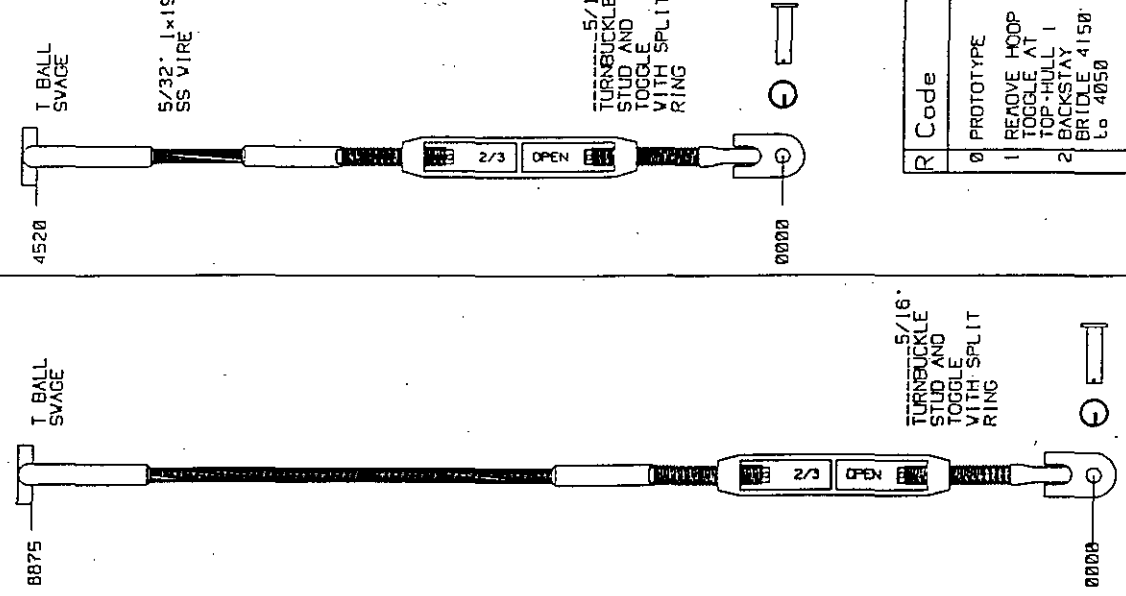
15030001	MAST SUPPORT A FRAME WITH ROLLER
15030002	MAST SUPPORT A FRAME SOCKET WITH BACKING PLATE
15030003	MAST SUPPORT A FRAME EXTENSION

R Code	Date		Dimensions in: --		Material: --	
0 PROTOTYPE	09/02/92	Scale: NONE	Gen. Tol.: NONE		Design date	View
		MAST SUPPORT A FRAME WITH ROLLER F210			09/02/92	
		BENÉTEAU USA P. O. Drawer 1218 Marion SC 29571 (803) 423-4201			By: BACB	
					Part No	
					15030001	

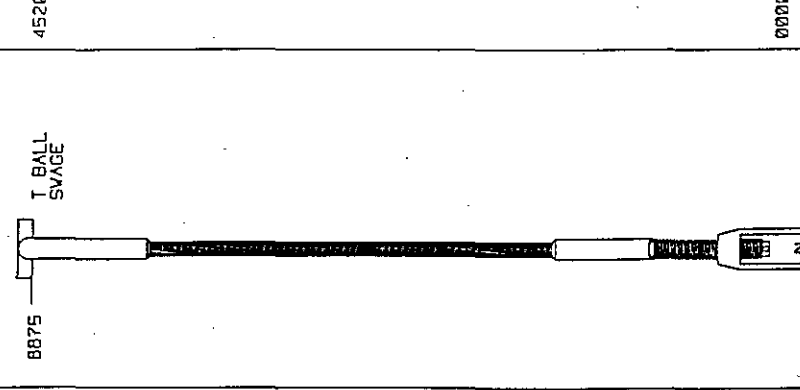
FORESTAY



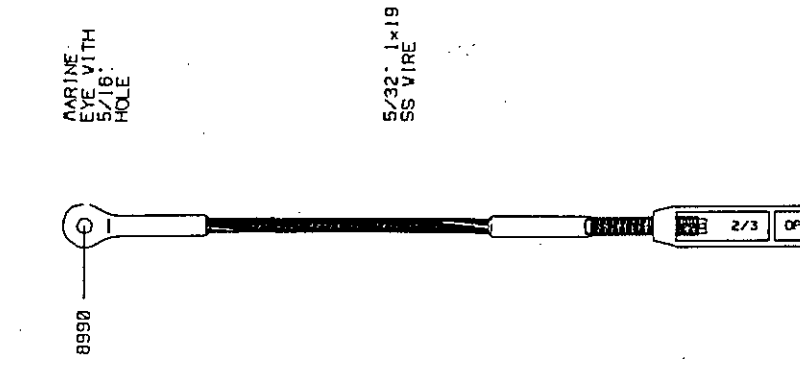
VID2



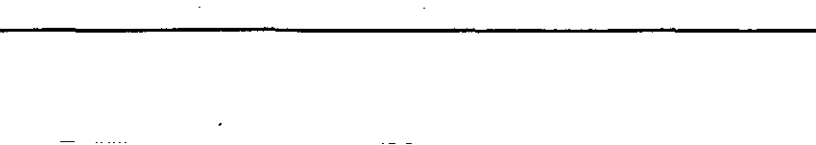
D1



BACKSTAY



BACKSTAY BRIDLE



R Code	Date	Dimensions in mm		Material: SECCO
		Scale: NONE	Gen. Tol.: NONE	
0 PROTOTYPE	10/14/92			View
1 REMOVE HOOP TOGGLE AT TOP-HULL 1	11/03/92	FORESTAY, VID2, D1 BACKSTAY and BRIDLE F210		Design date 10/14/92
2 BACKSTAY BRIDLE 4150 to 4050	11/09/92	BENETEAU INC. P.O. Drawer 1218 Merion, SC 29571 (803) 423-4201		By: BAOB Also Showing:
				Part No. 08020116

THIS DOCUMENT IS PROPRIETARY - REPRODUCTION MUST BE AUTHORIZED BY BENETEAU

BENEFAU FIRST 210 RUNNING RIGGING SPECIFICATIONS

11/4/92

PART No	USAGE	MAKE & TYPE	COLOR	QTY	SUPPLIER	TERMINAL 1	TERMINAL 2	DIA	LENGTH mm	FEET	IN
08030834 Rev.00	Main Halyard	Samson XLS Extra	Grey	1	Seco South	Knot Eye Bar Shackle Captive Pin 5mm	Whipping and Loop	5/16"	21000	68	10 3/4
08030522 Rev.00	Main Boom Topping Lift	Samson LS	White	1	Seco South	Soft Eye Bar Shackle Captive Pin 4mm	Whipping and Loop	3/16"	19000	57	10 1/8
08030503 Rev.00	Jib Halyard #1	Marlow 8 Plait Pre- stretched	White	1	Cruising Design	Knot Eye Bar Shackle Captive Pin 5mm	Burnt and supplied with 1 Bar Shackle Captive Pin 5mm	3/16"	0	0	0 1/8
08030835 Rev.00	Spi. Halyard #1	Samson LS	Red	1	Seco South	Soft Eye Snapshackle with Swivel NF12000S	Whipping and Loop	5/16"	24000	72	8 7/8
08030622 Rev.00	Spinnaker Pole Topping Lift	Samson XLS Extra	Red	1	Seco South	Soft Eye Snapshackle with Swivel NF12000S	Whipping and Loop	1/4"	16000	52	5 15/16
Rev.00	Outhaul		Black	1	Z Spar	Burnt	Burnt	1/4"	6000	19	8 3/16
Rev.00	Reef 1		Red	1	Z Spar	Burnt	Burnt	1/4"	12500	41	0 1/8
Rev.00	Reef 2		Green	1	Z Spar	Burnt	Burnt	1/4"	16000	52	5 15/16
08031600 Rev.00	Mainsheet #1 Purchase	Samson LS	Grey	1	Seco South	Soft Eye	Whipping	3/8"	11000	36	4 17/16
08031400 Rev.00	Jib Sheet	Samson LS	Black	2	Seco South	Whipping	Whipping	3/8"	9500	31	2 0 1/16
08030606 Rev.00	Spinnaker Sheet	Samson Ultra Lite	Red	2	Seco South	Soft Eye Snapshackle with Swivel NF12000S	Whipping	1/4"	21000	68	10 3/4
08030605 Rev.00	Foreguy	Samson XLS 900	Red	1	Seco South	Soft Eye Snapshackle with Swivel NF12000S	Whipping	1/4"	9500	31	2 0 1/16
08031100 Rev.00	Vang #1 Purchase	Samson LS	Grey	1	Seco South	Soft Eye	Whipping	5/16"	4550	14	1 1/8
08030301 Rev.00	Vang #1 Strop	SS 7x7	White Plas. Coat	1	Seco South	Hard Eye	Hard Eye	1/8"	305	1	0 0 1/16
08030504 Rev.00	Genoa Roller Furling Line	Samson LS	White	1	Seco South	Burnt	Whipping	3/16"	15000	48	2 9/16

BENETEAU FIRST 210 STANDING RIGGING SPECIFICATIONS

1/4/93

PART No.	STAY or SHROUD	LENGTH mm	FEET	IN	DIA	CITY	TERMINAL 1	TERMINAL 2	OTHER TERMINAL NOT MEASURED	TYPE	SUPPLIER
Rev.02 PART OF KIT 08020116	FORESTAY	8990	29	5 15 / 16	5/32"	1	MARINE EYE WITH 5/16" HOLE TO FIT Z SPAR FORESTAY SHEAVE BOX (6.5mm WIDE + 6mm PIN)	5/16" STUD AND SWAGE TURNBUCKLE (TURNBUCKLE TOGGLE PIN MUST HAVE SPLIT RING) + EXTRA HOOP TOGGLE WITH 5/16" PIN AND SPLIT PIN	NOTE: FORESTAY MEASUREMENT INCLUDES ALL TOGGLES	S/S 1x19	Seco South
Rev.02 PART OF KIT 08020116	V1D2 CAP SHROUD	8875	29	1 3 / 8	5/32"	2	T BALL TO FIT Z SPAR T BALL SLOT 9x19	5/16" STUD AND EYE TURNBUCKLE + HOOP TOGGLE WITH 5/16" PIN AND SPLIT RING	NOTE: MEASURED FROM T BALL TO HOOP TOGGLE	S/S 1x19	Seco South
Rev.02 PART OF KIT 08020116	D1 LOWER DIAGONAL	4520	14	9 15 / 16	5/32"	2	T BALL TO FIT Z SPAR T BALL SLOT 9x19	5/16" STUD AND EYE TURNBUCKLE + HOOP TOGGLE WITH 5/16" PIN AND SPLIT RING	NOTE: MEASURED FROM T BALL TO HOOP TOGGLE	S/S 1x19	Seco South
Rev.02 PART OF KIT 08020116	BACKSTAY	7880	25	10 1 / 4	5/32"	1	MARINE EYE 5/16" HOLE	MARINE EYE 5/16" HOLE		S/S 1x19	Seco South

BENETEAU FIRST 210 STANDING RIGGING SPECIFICATIONS

1/4/93

PART No.	STAY or SHROUD	LENGTH mm	FEET	IN	DIA	QTY	TERMINAL 1	TERMINAL 2	OTHER TERMINAL NOT MEASURED	TYPE	SUPPLIER
Rev.02 PART OF KIT 08020116	BACKSTAY BRIDLE	4050	13	3 7 / 16	1/8"	1	JAW TOGGLE 1/4" PIN	AIRCRAFT FORK 3/16" PIN	NOTE: USED WITH SOUTH COAST MARINE 40mm/5mm BACKSTAY ADJUSTER WITH ADJUSTMENT MIN 595mm AND MAX 925mm	S/S 7x19	Seco South
Rev.01 PART OF KIT 08020123	MAST RAISING BRIDLE VERTICAL	1601	5	3 0 / 16	1/8"	2	T BALL TO FIT Z SPAR T BALL SLOT 9x19	HARD EYE ON 1 1/2" OD RING	NOTE: MEASURED FROM T BALL TO RING	S/S 1x19	Seco South
Rev.01 PART OF KIT 08020123	MAST RAISING BRIDLE HORIZONTAL	3250	10	7 15 / 16	5/16"	2	SOFT EYE ON 1 1/2" OD RING	BURNT	NOTE: MEASURED FROM RING TO BURNT END	LS	Seco South



FIRST 21.0

COMPUTER No. : F2101
VERSION : F21.0 STANDARD
NOTE : INCLUDES ALL ITEMS BELOW

THIS DOCUMENT IS NOT CONTRACTUAL. ALL DESCRIPTIONS, ILLUSTRATIONS, ETC. ARE ONLY AN INDICATION. WE RESERVE THE RIGHT TO MODIFY OR IMPROVE OUR PRODUCTS WITHOUT NOTICE.

RUNNING RIGGING

- 2 JIB SHEETS SHEETED THROUGH JAMMERS - COLOR CODED.
- 1 MAIN HALYARD - COLOR CODED.
- 1 MAINSHEET - COLOR CODED.
- 4:1 HARKEN BALL BEARING MAINSHEET BLOCKS WITH RATCHET AND CLEAT.
- 1 MAIN BOOM TOPPING LIFT - COLOR CODED.
- 1 VANG LINE - COLOR CODED.
- 4:1 HARKEN BALL BEARING VANG BLOCKS WITH CLEAT.

STANDING RIGGING

- 2 DOUBLE "U" SHROUD CHAINPLATES.
- FORESTAY IN SS 1x19 WIRE.
- SHROUDS IN SS 1x19 WIRE WITH INVERTED TOGGLES ON TURNBUCKLES TO MINIMIZE LOCK-UP OF TURNBUCKLES ON CHAINPLATES WHEN LOWERING OR RAISING THE MAST.
- BACKSTAY IN SS 1x19 WIRE.
- 2:1 ADJUSTABLE BACKSTAY BRIDLE IN SS 7x19 WIRE RUNS OVER HARKEN BALL BEARING WIRE BLOCK.
- 4:1 ENCLOSED BACKSTAY ADJUSTER USING HARKEN BALL BEARING BLOCKS.
- TOTAL BACKSTAY PURCHASE IS 8:1.

SPARS

- TAPERED ANODIZED ALUMINIUM MAST WITH STEAMING LIGHT AND 1 MESSENGER LINE - STEAMING LIGHT CABLE AND MESSENGER LINE RUN IN A CONDUIT.
- FRACTIONAL RIG WITH SINGLE RAKED SPREADERS.
- ANODIZED ALUMINIUM BOOM WITH 4:1 OUTHAUL CLEATED MID-BOOM AND 2 REEFING LINES JAMMED AT THE GOOSENECK.
- HINGED ALUMINIUM MAST STEP WITH 1 MAST STEP BLOCK.

DECK GEAR

- 2 AMIOT GENOA TRACKS WITH ADJUSTABLE FAIRLEADS AND INTEGRATED PLUNGER STOPS - 1 PORT AND 1 STARBOARD.
- 2 TRIPLE SHEAVE HALYARD DECK ORGANIZERS - 1 PORT AND 1 STARBOARD.

- 2 DOUBLE SPINLOCK HALYARD JAMMERS - 1 PORT AND 1 STARBOARD.
- 2 LEWMAR 6AO WINCHES MOUNTED ON COACH ROOF - 1 PORT AND 1 STARBOARD.
- 2 HALYARD NEATENER CLEATS ON COACH ROOF - 1 PORT AND 1 STARBOARD.
- 2 BULKHEAD MOUNTED JAMB CLEATS FOR SHEETS - 1 PORT AND 1 STARBOARD.
- GENOA ROLLER FURLING UNIT, ROLLER FURLING LINE LED THROUGH 2 FAIRLEADS AND CLEATED ON HARKEN CAM CLEAT IN THE COCKPIT.
- SS BOW RAIL WITH BICOLOR NAV. LIGHT. SS STERN RAIL WITH ADJUSTABLE BACKSTAY CHAINPLATES.
- CAST ALLOY STEMHEAD FITTING INCORPORATING FORESTAY CHAIN PLATE. WOODEN TOE RAIL.
- TAPERED SS STANCHIONS 445mm HIGH WITH FLUSH CAST ALLOY STANCHION BASES.
- PLASTIC COATED SINGLE LIFELINES WITH LARGE GATES PORT AND STARBOARD.
- 3 ALLOY MOORING CLEATS.
- SELF DRAINING COCKPIT.
- 2 COCKPIT LOCKERS.
- STERN LIGHT MOUNTED ON STARBOARD SIDE OF TRANSOM.

SAILS

- LOOSE FOOTED MAINSAIL WITH BOLT ROPE, 2 REEFS, 1 FULL LENGTH BATTEN, 3 SHORT BATTENS AND SAIL BAG.
- 110% ROLLER FURLING GENOA IN UV PROTECTED CLOTH WITH SAIL BAG

STEERING SYSTEM

- TWIN TRANSOM HUNG RUDDERS WITH SINGLE WOODEN TILLER.
- 1 ALUMINIUM TILLER EXTENSION WITH STOWAGE CLIP.

ELECTRICAL SYSTEM

- 5 FUNCTION ELECTRICAL PANEL.
- 1 CENTRALLY MOUNTED CEILING LIGHT.
- ACCESS TO MAST ELECTRICAL CABLES BELOW DECK.
- 2 PIN WATERPROOF DECK PLUG MOUNTED ON DECK NEAR MAST STEP FOR MAST ELECTRICS.
- BATTERY BOX WITH COVER AND TIE DOWN STRAPS - NO BATTERY.
- EASY CONNECT BATTERY CABLES - COLOR CODED.

INTERIOR

- V BUNK FORWARD WITH ROYAL BLUE CUSHIONS.
- 2 STORAGE COMPARTMENTS BELOW V BUNK.
- PORTA POTTY TOILET MOUNTED BELOW V BUNK.
- OPENING ROUND HATCH DIAMETER 350mm ABOVE V BUNK.
- SQUARE PLASTIC SINK.
- STORAGE AREA BELOW SINK.
- STORAGE AREA OUTBOARD SIDE OF SINK.
- 2 ROUND FIXED PORTHOLES DIAMETER 180mm - 1 PORT AND 1 STARBOARD.
- STARBOARD SETTEE/QUARTER BERTH WITH ROYAL BLUE CUSHION AND BACKREST.
- 2 STORAGE COMPARTMENTS BELOW STARBOARD SETTEE/QUARTER BERTH.
- STORAGE AREA BEHIND THE BACKREST OF THE STARBOARD SETTEE/QUARTER BERTH RUNNING THE FULL LENGTH OF THE BERTH.

- FOLDING TABLE.
- FOLDING TABLE STORAGE SHELF BELOW THE COCKPIT.
- STORAGE AREA FOR OUTBOARD MOTOR BELOW THE FOLDING TABLE STORAGE SHELF.
- REMOVABLE COMPANIONWAY STEP FOR ACCESS TO OUTBOARD MOTOR STORAGE AREA BELOW COCKPIT.
- PORT SETTEE/QUARTER BERTH WITH ROYAL BLUE CUSHION AND BACKREST.
- 2 STORAGE COMPARTMENTS BELOW PORT SETTEE/QUARTER BERTH.
- STORAGE AREA BEHIND THE BACKREST OF THE PORT SETTEE/QUARTER BERTH RUNNING THE FULL LENGTH OF THE BERTH.
- GLOWMASTER BUTANE STOVE- BUTANE NOT SUPPLIED.
- STORAGE AREA BELOW STOVE.
- STORAGE AREA OUTBOARD SIDE OF STOVE.

COMPANIONWAY

- LOCKABLE WEATHER BOARD WITH VENT IN VARNISHED WOOD.
- SLIDING COMPANIONWAY HATCH IN FIBERGLASS AND GREEN PLEXIGLASS.
- SLIDING COMPANIONWAY HATCH ALSO TILTS.
- REMOVABLE STEPS FOR ACCESS TO OUTBOARD MOTOR STORAGE.

OUTBOARD ENGINE

- STORAGE OF OUTBOARD MOTOR FUEL TANK IN EITHER COCKPIT LOCKER.
- ALUMINIUM BACKING PLATES INSTALLED READY TO ACCEPT OUTBOARD ENGINE BRACKET.
- OUTBOARD ENGINE BRACKET NOT SUPPLIED.
- NO OUTBOARD ENGINE SUPPLIED.

MISCELLANEOUS EQUIPMENT

- 1 ALUMINIUM WINCH HANDLE 8".
- OWNERS MANUAL
- BENETEAU BINDER FOR WARRANTY PAPERS.

KEEL

- CAST IRON SWING KEEL ADJUSTED INSIDE BY USING A WINCH HANDLE.
- BALL ON KEEL CASING SHOWS POSITION OF KEEL.

UPHOLSTERY

- ROYAL BLUE CUSHION KIT.
- WHITE VINYL INTERIOR TRIM.

FLOTATION

- UNSINKABLE DUE TO THE USE OF FOAM IN BOW AND STERN.

TRAILER

- TRAILER NOT SUPPLIED.

FIRST 21.0

COMPUTER No. : F2100J0

OPTION : F21.0 ADDITIONAL JIB HALYARD.

NOTE : INCLUDES ALL ITEMS BELOW.

THIS DOCUMENT IS NOT CONTRACTUAL. ALL DESCRIPTIONS, ILLUSTRATIONS, ETC., ARE ONLY AN INDICATION. WE RESERVE THE RIGHT TO MODIFY OR IMPROVE OUR PRODUCTS WITHOUT NOTICE.

RUNNING RIGGING

- 1 JIB HALYARD - COLOR CODED.
- 1 MAST STEP BLOCK.

FIRST 21.0

COMPUTER No. : F2100A1

OPTION : F21.0 SPINNAKER GEAR

NOTE : INCLUDES ALL ITEMS BELOW.
DOES NOT INCLUDE SPINNAKER HALYARD.
SPINNAKER HALYARD IS INCLUDED IN SPINNAKER HALYARD
OPTION.
SPINNAKER HALYARD IS INCLUDED WITH TRAILER OPTION.

THIS DOCUMENT IS NOT CONTRACTUAL. ALL DESCRIPTIONS, ILLUSTRATIONS, ETC., ARE ONLY AN INDICATION. WE RESERVE THE RIGHT TO MODIFY OR IMPROVE OUR PRODUCTS WITHOUT NOTICE.

RUNNING RIGGING

- 2 SPINNAKER SHEETS.
- 2 HARKEN RATCHET BLOCKS WITH BECKETT - 1 PORT AND 1 STARBOARD.
- 2 FOLD-DOWN WICHARD PAD EYES FOR SPINNAKER SHEET BLOCKS.
- 1 SPINNAKER POLE TOPPING LIFT.
- 1 SPINNAKER POLE TOPPING LIFT MAST STEP BLOCK.
- 1 HARKEN CAM CLEAT FOR CLEATING SPINNAKER POLE TOPPING LIFT.
- 1 FOREGUY.
- 1 HARKEN SWIVEL BALL BEARING FOREGUY BLOCK.
- 1 FOLD-DOWN WICHARD PAD EYE FOR FOREGUY BLOCK.
- 1 HARKEN CAM CLEAT FOR CLEATING FOREGUY.
- NO SPINNAKER HALYARD SUPPLIED WITH THIS OPTION.

SPARS

- 1 SPINNAKER POLE WITH PLASTIC COATED BRIDLE AND TRIP LINE.

SAILS

- NO SAIL (SPINNAKER) IS SUPPLIED WITH THIS OPTION.

FIRST 21.0

COMPUTER No. : F2100B2

OPTION : F21.0 SWIM LADDER.

NOTE : INCLUDES ALL ITEMS BELOW.

THIS DOCUMENT IS NOT CONTRACTUAL. ALL DESCRIPTIONS, ILLUSTRATIONS, ETC. ARE ONLY AN INDICATION. WE RESERVE THE RIGHT TO MODIFY OR IMPROVE OUR PRODUCTS WITHOUT NOTICE.

EXTERIOR HARDWARE - TRANSOM

- SWIM LADDER MOUNTED ON PORT SIDE.
- 1 STOWAGE CLIP.

FIRST 21.0

COMPUTER No. : F2100A0

OPTION : F21.0 SPINNAKER HALYARD.

NOTE : INCLUDES ALL ITEMS BELOW.

THIS DOCUMENT IS NOT CONTRACTUAL. ALL DESCRIPTIONS, ILLUSTRATIONS, ETC., ARE ONLY AN INDICATION. WE RESERVE THE RIGHT TO MODIFY OR IMPROVE OUR PRODUCTS WITHOUT NOTICE.

RUNNING RIGGING

- 1 SPINNAKER HALYARD - COLOR CODED.
- 1 MAST STEP BLOCK.

FIRST 21.0

COMPUTER No. : F2100M5

OPTION : F21.0 OUTBOARD ENGINE BRACKET.

NOTE : INCLUDES ALL ITEMS BELOW.

THIS DOCUMENT IS NOT CONTRACTUAL. ALL DESCRIPTIONS, ILLUSTRATIONS, ETC. ARE ONLY AN INDICATION. WE RESERVE THE RIGHT TO MODIFY OR IMPROVE OUR PRODUCTS WITHOUT NOTICE.

PROPULSION

- OUTBOARD ENGINE BRACKET INSTALLED ON STARBOARD SIDE OF TRANSOM NEAR CENTER.
- OUTBOARD MOTOR NOT SUPPLIED WITH THIS OPTION.

FIRST 21.0

COMPUTER No. : F2100R0

OPTION : F21.0 MAST MOUNTED COMPASS.

NOTE : INCLUDES ALL ITEMS BELOW.

THIS DOCUMENT IS NOT CONTRACTUAL. ALL DESCRIPTIONS, ILLUSTRATIONS, ETC. ARE ONLY AN INDICATION. WE RESERVE THE RIGHT TO MODIFY OR IMPROVE OUR PRODUCTS WITHOUT NOTICE.

NAVIGATION INSTRUMENTS

- 1 PLASTIMO CONTEST 130 BULKHEAD COMPASS WITH MAST BRACKET AND 2 THUMB SCREW SAIL TRACK SLIDES.
- NO PROVISION MADE FOR CONNECTING ELECTRIC LIGHTING.

FIRST 21.0

COMPUTER No. : F2100X5

OPTION : F21.0 TRAILER PACKAGE 2 - WITH BRAKES.

NOTE : INCLUDES ALL ITEMS BELOW.

THIS DOCUMENT IS NOT CONTRACTUAL. ALL DESCRIPTIONS, ILLUSTRATIONS, ETC., ARE ONLY AN INDICATION. WE RESERVE THE RIGHT TO MODIFY OR IMPROVE OUR PRODUCTS WITHOUT NOTICE.

MAST RAISING

- 1 GALVANIZED MAST RAISING AND LOWERING SPREADER BAR - RESTS ON LOWEST PART OF MAST.
- 2 MAST RAISING AND LOWERING BRIDLES - ATTACHES THE JIB SHEETS TO "T" BALL PLATES ON THE MAST AND TO THE FORWARD END OF THE GALVANIZED SPREADER BAR.
- 1 SPINNAKER HALYARD - ATTACHES TO THE FORWARD END OF THE GALVANIZED SPREADER BAR.
- 1 MAST STEP BLOCK FOR THE SPINNAKER HALYARD.
- 1 MAST SUPPORT "A" FRAME WITH ROLLER.
- 2 MAST SUPPORT "A" FRAME EXTENSIONS.
- 2 MAST SUPPORT "A" FRAME SOCKETS MOUNTED ON TRANSOM BEAM.

TRAILER

- GALVANIZED TRAILER WITH GALVANIZED RIMS - WITH BRAKES.
- MAXIMUM LOADED TRAILER, INCLUDING TRAILER IS 4600 POUNDS.
- WIRED FOR LIGHTS - TRAILER LIGHTS SUPPLIED.
- EXTENDED HITCH FOR EASIER LAUNCHING.
- MAST SUPPORT POST INCORPORATING TRAILER WINCH AND MAST HOIST ROLLER.
- GALVANIZED TIE-DOWN EYES.
- ADJUSTABLE TRAILER STEADYING STRUTS - USED WHEN TRAILER PARKED.

FIRST 21.0

COMPUTER No. : F2100X4

OPTION : F21.0 TRAILER PACKAGE 1 - NO BRAKES.

NOTE : INCLUDES ALL ITEMS BELOW.

THIS DOCUMENT IS NOT CONTRACTUAL. ALL DESCRIPTIONS, ILLUSTRATIONS, ETC. ARE ONLY AN INDICATION. WE RESERVE THE RIGHT TO MODIFY OR IMPROVE OUR PRODUCTS WITHOUT NOTICE.

MAST RAISING

- 1 GALVANIZED MAST RAISING AND LOWERING SPREADER BAR - RESTS ON LOWEST PART OF MAST.
- 2 MAST RAISING AND LOWERING BRIDLES - ATTACHES THE JIB SHEETS TO "T" BALL PLATES ON THE MAST AND TO THE FORWARD END OF THE GALVANIZED SPREADER BAR.
- 1 SPINNAKER HALYARD - ATTACHES TO THE FORWARD END OF THE GALVANIZED SPREADER BAR.
- 1 MAST STEP BLOCK FOR THE SPINNAKER HALYARD.
- 1 MAST SUPPORT "A" FRAME WITH ROLLER.
- 2 MAST SUPPORT "A" FRAME EXTENSIONS.
- 2 MAST SUPPORT "A" FRAME SOCKETS MOUNTED ON TRANSOM BEAM.

TRAILER

- GALVANIZED TRAILER WITH GALVANIZED RIMS - NO BRAKES.
- MAXIMUM LOADED TRAILER, INCLUDING TRAILER IS 4600 POUNDS.
- WIRED FOR LIGHTS - TRAILER LIGHTS SUPPLIED.
- EXTENDED HITCH FOR EASIER LAUNCHING.
- MAST SUPPORT POST INCORPORATING TRAILER WINCH AND MAST HOIST ROLLER.
- GALVANIZED TIE-DOWN EYES.
- ADJUSTABLE TRAILER STEADYING STRUTS - USED WHEN TRAILER PARKED.