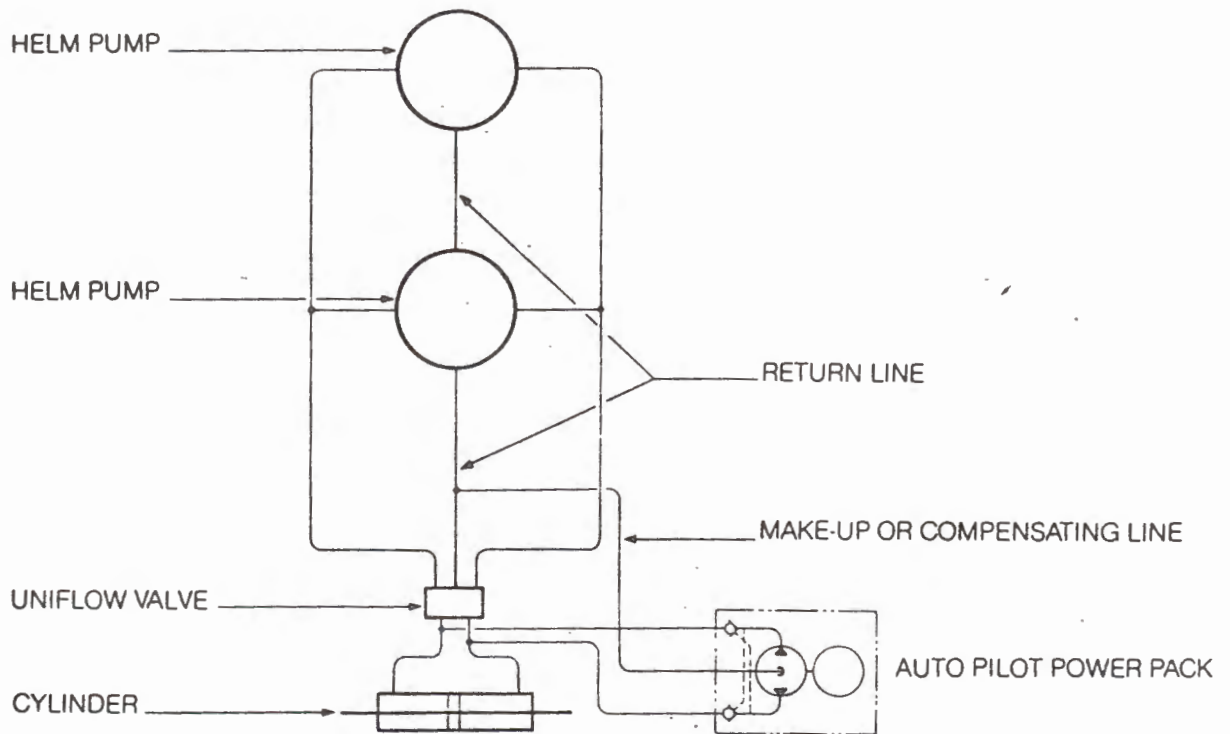


INSTALLATION SCHEMATIC

FOR AUTO PILOT INTERFACE TO TELEFLEX 250V-275V SYSTEMS. INTERFACE BETWEEN UNIFLOW VALVE AND CYLINDER ONLY.



NOTE: CONNECTION OF AUTO PILOT POWER PACK MAKE-UP LINE OR COMPENSATING LINE TO THE RETURN LINE MUST BE A MINIMUM OF 4 FEET AWAY FROM THE UNIFLOW VALVE.