

Illustration of a typical Cobra Installation.

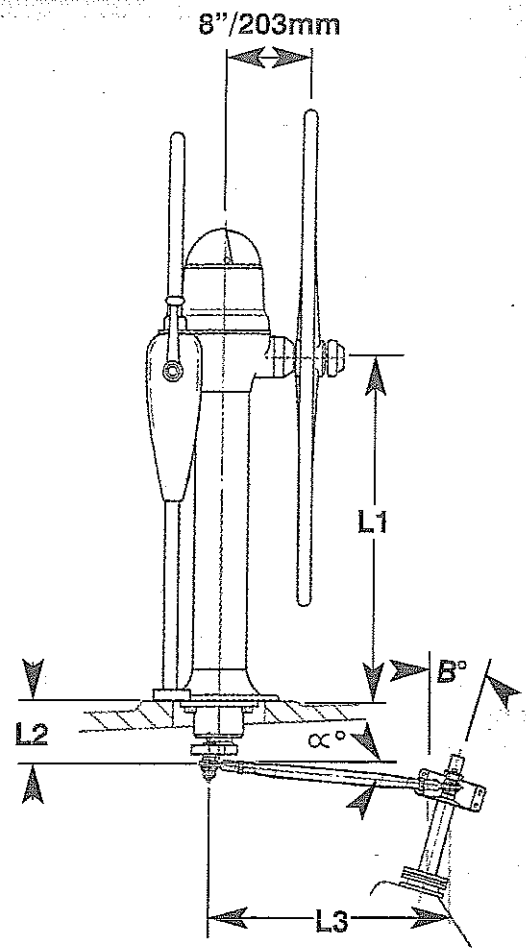
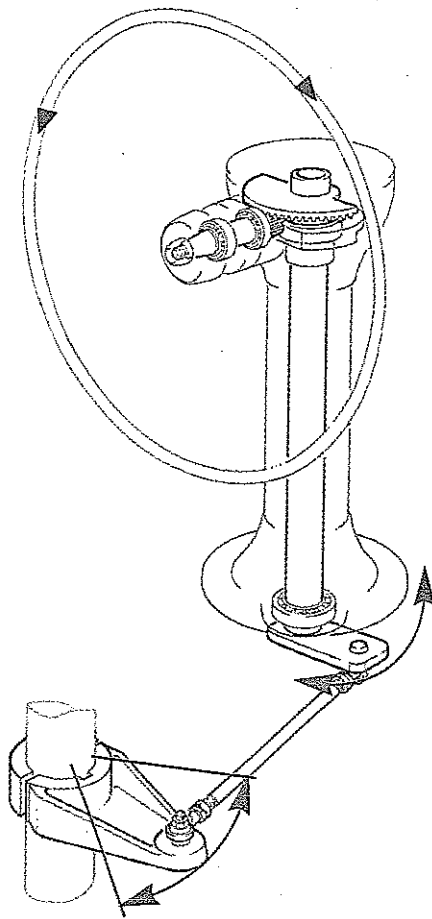


Complies with the relevant International Standards ISO 12216.2(E).

This standard covers the essential safety requirements of the Recreational Craft Directive 94/25/EC.

COBRA CRUISING/ COBRA OCEAN MONOCOLUMN/ COBRA

- Rated output load 10195 N
- Maximum rudder torque at midships 210
- Maximum rudder torque at full lock 373



Cobra Installation Guidelines

L1 Standard pedestal height $L1 = 28''$ 710mm. Minimum possible height = $7''$ 178mm, maximum possible height $36''$ 915mm.

L2 Standard under deck dimension $L2 = 4''$ 102mm. The minimum dimension is governed only by the thickness of the cockpit sole. Where an extended L2 under deck is required, it may be necessary to also add a torque snubber plate, as seen in this brochure.

L3 The distance between the centre of pedestal and the rudder stock, L3, can vary between $5''$ 120mm- $79''$ 2000mm. Draglinks are made to specification and are adjustable by $0.78''$ 20mm upon installation.

The draglink should not exceed an angle of 5° from the horizontal.

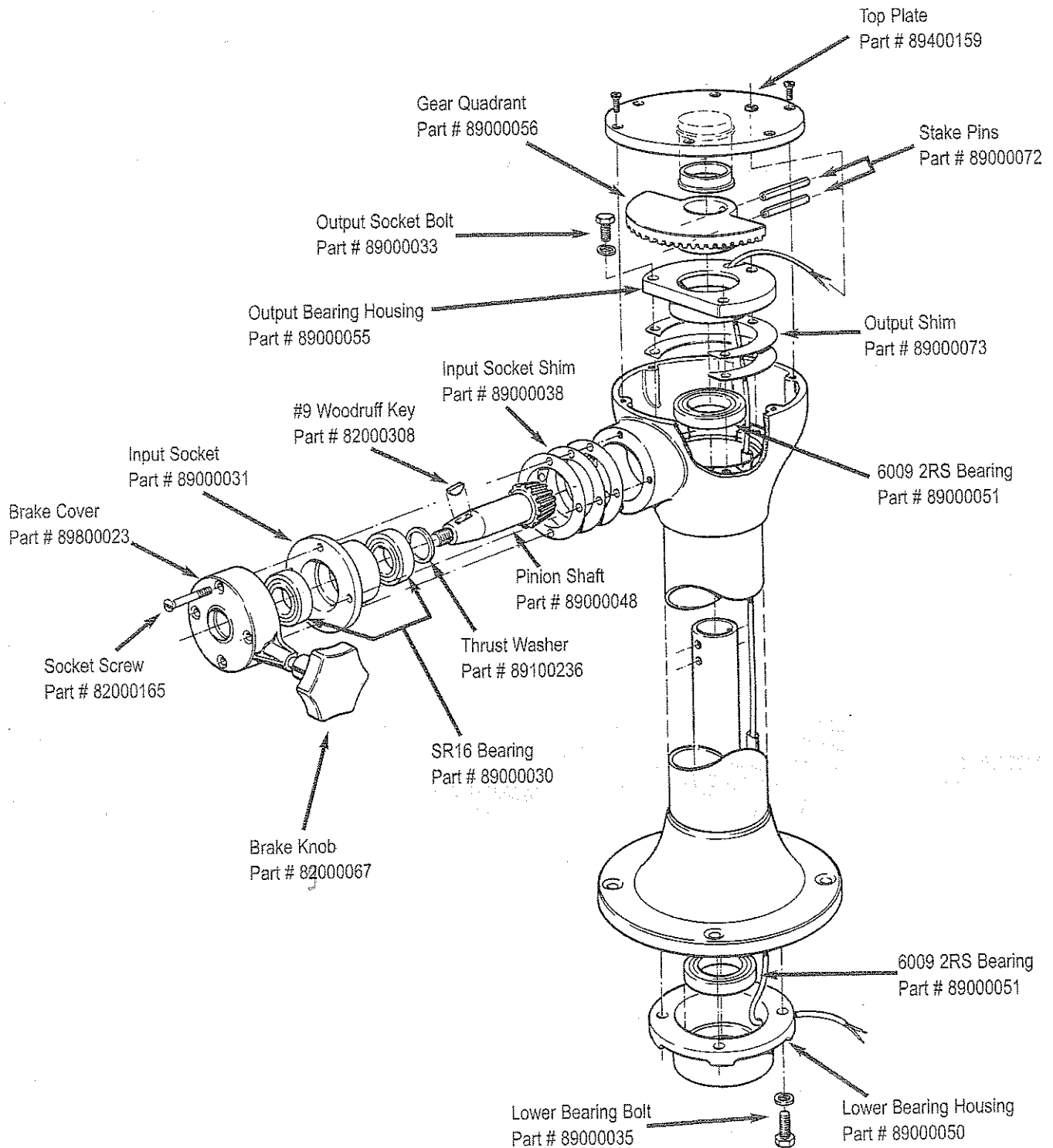
A standard Cobra installation can accommodate a rudder rake up to a maximum of 30° . This does however depend on the boat size and type, and the length of L3. Where this angle exceeds 20° , please consult our technical department.

As standard, all levers are mounted to the starboard side and the pedestal is mounted forward of the rudder stock.

LEWMAR®

LEWMAR LTD Crescent House 1-5 Latimer Road Luton Bedfordshire LU1 3UZ
tel +44 (0)1582 404400 fax +44 (0)1582 400331 e-mail info@whitlocksteering.com website www.lewmar.com

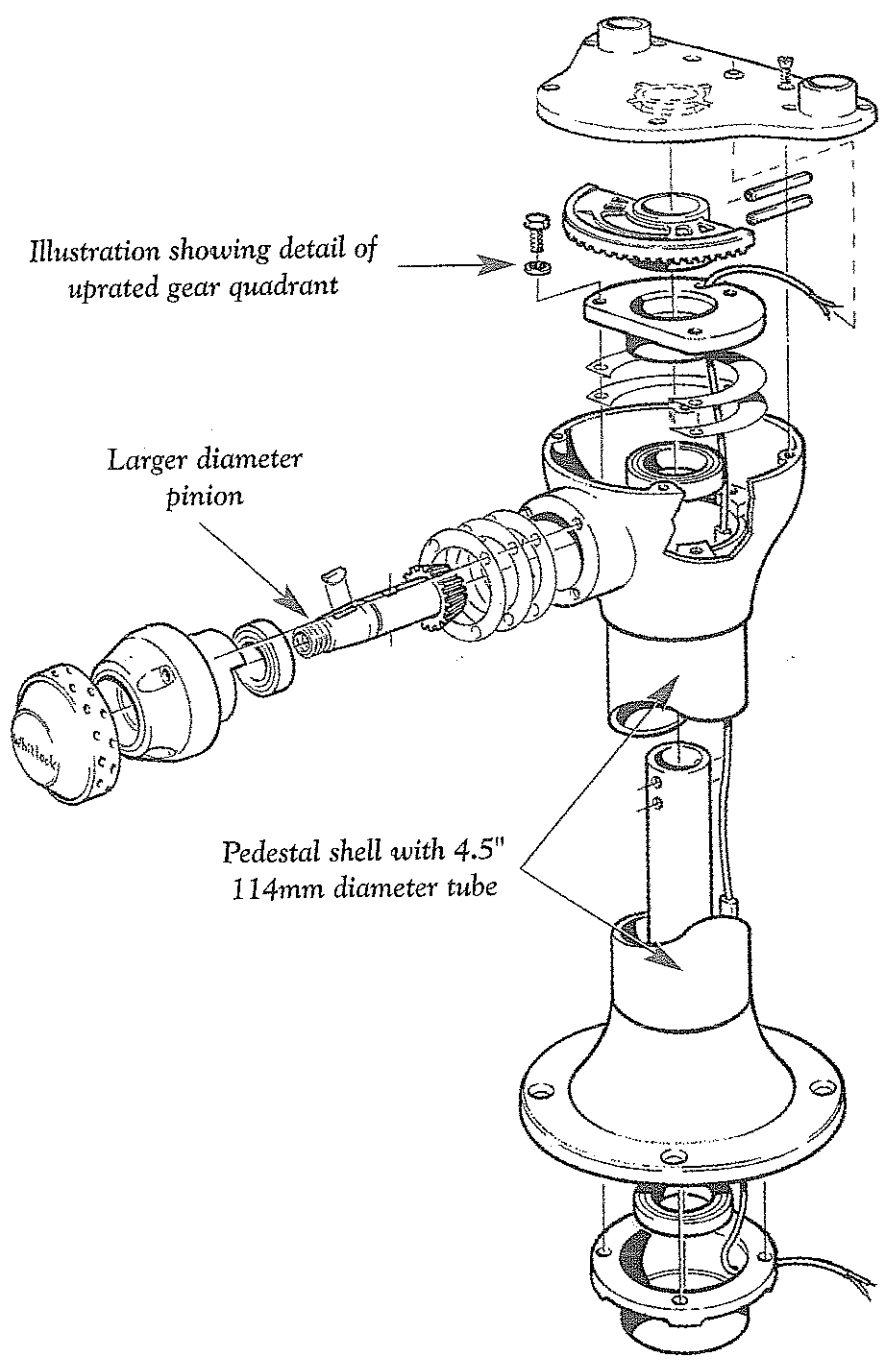
COBRA 5R 1988 - 1990



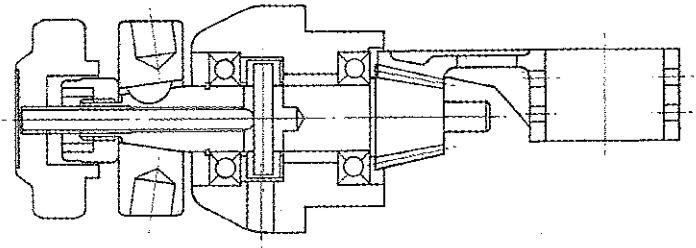
Spare parts can be obsolete!

X Yacht using Cobra Racing Steering systems.

© Nico Martinez



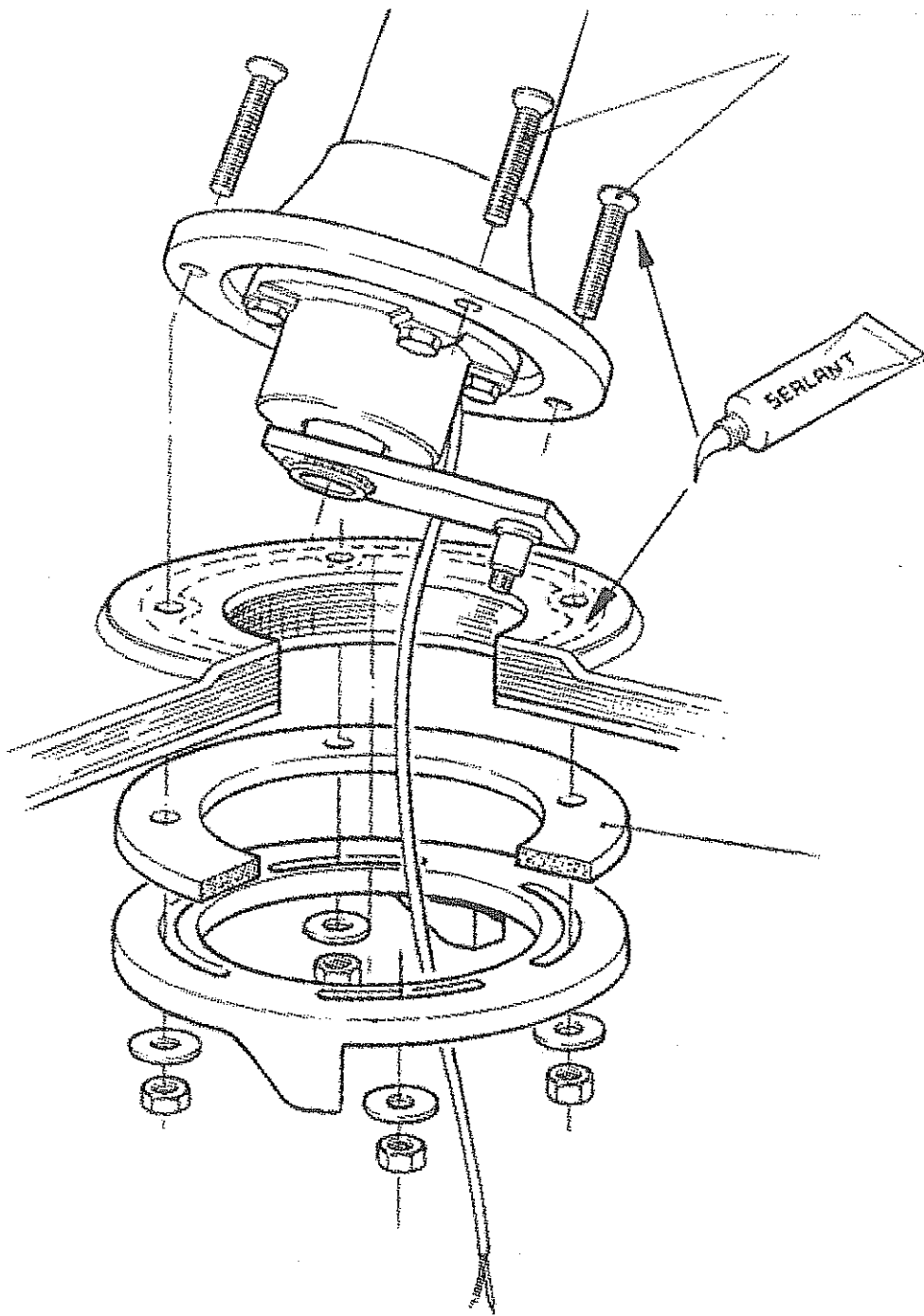
This input socket design prevents the quadrant gear from lifting the pinion gear under high load conditions.



The PowRTM Input cartridge.

ensures that the output lever travel does not exceed the designed limit.

Stops should operate adjacent to operating centres.



Tiller Levers