

FITTING INSTRUCTION 1A ("D" och "E"-sections with separate conduits)

1 Equipment required

- Cable
- Closed cell foam plastic pads (approx. 20x20x20 mm)
- Adjustable spanner
- Drill
- Drill bit. (appr. 4 mm larger diameter than that of cable)
- Bent plate strip, 100x15x1,5 mm.
- Thin line, 0,5 m. in length, Ø 3-4 mm.
- Silicone compound (keel stepped masts only)

2 Preparation

Excepting at the headbox, at the partners, and at the heel, cable conduits are open along the mast track face. Remove the headbox by taking off the nuts on the top of the box, and lift the box upwards. Drill hole(s) for the cable(s) in the centre of the mast-wall face of the cable conduit approximately 50 mm (2") below the cut-out for the headbox. Take care not to damage any cables already in situ. Select the side opposite the main halyard if possible.

Drill the hole at an angle to minimize the risk of chafe, and burr it carefully. Same turns, of adhesive tape around the cable contribute towards a fairer cable passage. (See fig. 1.A.2). Standard plastic cable grommets are available for same cable sizes. Any holes needed at spreader level or elsewhere for deck lights, etc. are executed in the same manner. Mast heel fittings are already provided with cable exit holes.

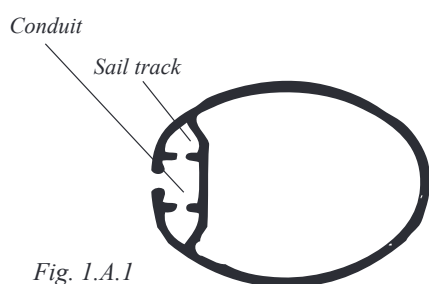


Fig. 1.A.1

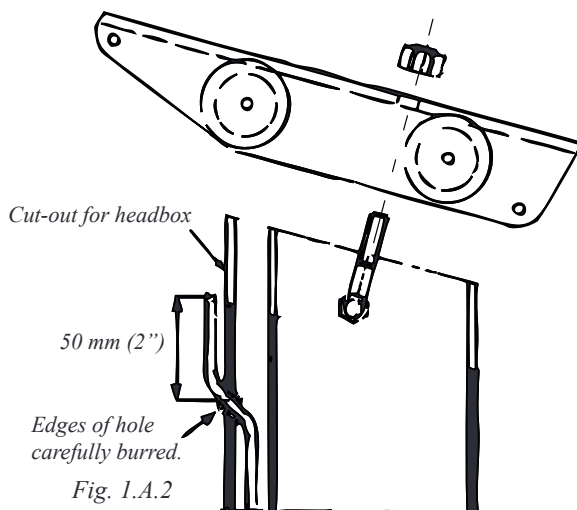


Fig. 1.A.2

3 Fitting procedure

With the help of a length of messenger line draw the cable upwards from the heel (see fig. 1.A.3). Alternatively, make an eye at the cable end, and pull the cable along the conduit with the aid of a small screwdriver. Feed the cable through the pre-drilled exit hole at the mast-head.

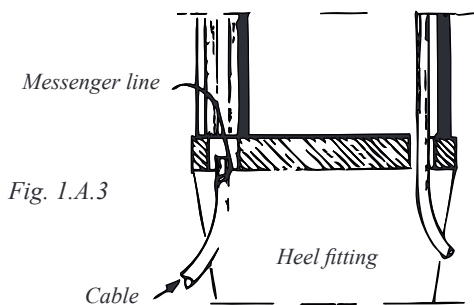


Fig. 1.A.3



Fig. 1.A.4

A messenger and a long hook will facilitate passing the goose-neck fitting and track gate. Track gates that are screwed in place are easily removed. The aforementioned eye on the cable end facilitates threading the cable through the hole at the mast-head. To avoid the weight of the cable from being suspended from the point of mast head exit, and to prevent the cable from slamming inside the conduit, the cable must be wedged in place. This is best done by forcing pads of closed cell plastic foam at regular intervals along the conduit length. Their size is dependant upon the space occupied by the cable(s) in the conduit. Try first with 20x20x20 mm pads, fitting them as shown in figs. 1.A.5A to C. It can be a little tricky at first, but one soon gets the knack of it. A pad every 60 cm (2') gives satisfactory support. The advantage of pads over gluing is that the pads are easily removed if one wants to remove the cable at a later date. (See the last paragraph on this page).

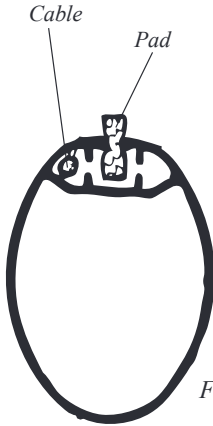


Fig. 1.A.5a

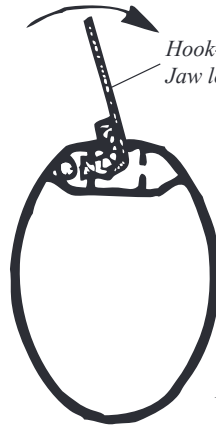


Fig. 1.A.5b

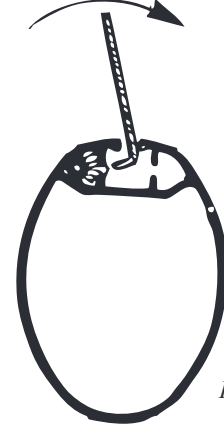


Fig. 1.A.5c

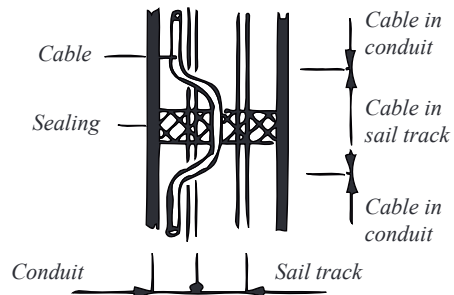
Keel stepped masts

On keel stepped masts the sailtrack and conduits are sealed with silicone rubber on a level with the upper edge of the mast coat. An exception are those masts that have been left unsealed on customer request, and these are clearly labelled "OPEN CONDUITS". (See instruction 595-548-E, **not** attached). This packing must be removed to give free passage for the cable * and be replaced after the cable has been installed. There are holes where the sealant can be injected to re-seal the conduits just above or just below the top edge of the coat.

If existing cables are glued, no further steps need be taken. If they are held in place with pads the pads must first be removed before fitting the new cable. Remove the headbox (fig. 1.A.2). Insert a hook-shaped plate strip (fig. 1.A.5b) below one pad at a time, push the pad to the top end of the mast, and remove it. The track gate can also be removed, and pads pushed there for removal.

These pads can later be re-used for holding both the old and the new cables.

*) This is a time-consuming task, so contact Seldén Mast for advice. The method shown opposite can be used for **thin** cables (appr. 6,5 mm Ø 1,4" maximum). It is easier to remove sealing compound from the sail track than from a conduit.



VIEWED FROM AFT:
SECTION